

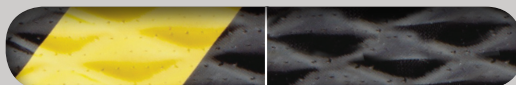
# Hog Heaven® Mats

Anti-Fatigue • Indoor • Dry or Damp Areas



Hog Heaven anti-fatigue mats are designed to provide comfort and durability in a variety of harsh conditions.

- **Comfortable** - High-density nitrile-blended cushion helps eliminate pressure to the lower back and legs, providing superior comfort
- **Safe** - Certified high-traction by the National Floor Safety Institute (NFSI); sloped edges provide a safe transition from floor to mat
- **Durable** - Nitrile-blended cushion provides years of useful service life; cushion is molded, not glued, to the nitrile rubber surface so it will not separate; edges will not crack or curl
- **Versatile** - Welding safe; ESD rating of electrically conductive; chemical resistant; surface is grease/oil proof and cushion is grease/oil resistant
- Available in 5/8" or 7/8" thicknesses with solid black or with OSHA-approved yellow striped borders
- Can be customized with your logo, design, or message (see Hog Heaven Impressions)



Caution Yellow

Black

## Hog Heaven® Mats 5/8"

## Hog Heaven® Mats 7/8"

Black Border		Product No. 421
Size (ft.)	Size (in.)	Shipping Weight
2' x 3'	23" x 32"	7 lbs.
3' x 5'	32" x 58"	16 lbs.
3' x 12'	32" x 143"	37 lbs.
4' x 6'	46" x 70"	26 lbs.
4.8' x 8'	58" x 95"	45 lbs.

Black Border		Product No. 422
Size (ft.)	Size (in.)	Shipping Weight
2' x 3'	23" x 32"	8 lbs.
3' x 5'	32" x 58"	17 lbs.
3' x 12'	32" x 143"	40 lbs.
4' x 6'	46" x 70"	28 lbs.
4.8' x 8'	58" x 95"	46 lbs.

Striped Border		Product No. 423
Size (ft.)	Size (in.)	Shipping Weight
2' x 3'	23" x 32"	7 lbs.
3' x 5'	32" x 58"	16 lbs.
3' x 12'	32" x 143"	37 lbs.
4' x 6'	46" x 70"	26 lbs.
4.8' x 8'	58" x 95"	45 lbs.

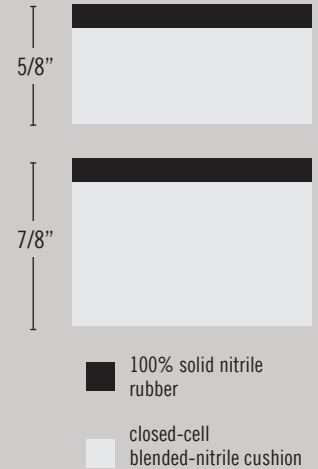
Striped Border		Product No. 424
Size (ft.)	Size (in.)	Shipping Weight
2' x 3'	23" x 32"	8 lbs.
3' x 5'	32" x 58"	17 lbs.
3' x 12'	32" x 143"	40 lbs.
4' x 6'	46" x 70"	28 lbs.
4.8' x 8'	58" x 95"	46 lbs.

Custom sizes are available in widths of 2' (23"), 3' (32"), 4' (46"), and 4.8' (58") and lengths up to 100'. Please note that mats over 60' will have up to 2 seams. Striped borders are only available on the two side borders and not the ends.

Note: Mat sizes are approximate as rubber shrinks and expands in conjunction with temperature and time. Tolerable manufacturing size variance is 3-5%.

Custom sizes are available in widths of 2' (23"), 3' (32"), 4' (46"), and 4.8' (58") and lengths up to 100'. Please note that mats over 60' will have up to 2 seams. Striped borders are only available on the two side borders and not the ends.

Note: Mat sizes are approximate as rubber shrinks and expands in conjunction with temperature and time. Tolerable manufacturing size variance is 3-5%.



## Hog Heaven® Impressions Mat

