



# BEVERAGE-AIR

PO Box 5932, Spartanburg, SC 29304  
1-888-845-9800 Fax# 1-864-582-5083  
<http://www.Beverage-Air.com>

## Commercial Refrigeration Equipment General Specification

### BB GLASS DOOR — BACK BAR REFRIGERATOR WITH SLIDING GLASS DOORS

Back bar storage cabinet with sliding glass doors comes in a basic, self-contained 48" wide model. Overall height is 34." Depth is 23 1/4" from the front of cabinet to the back of the unit.

#### CABINET CONSTRUCTION

Standard, cabinet exterior construction includes attractive, wear resistant vinyl on steel in black finish. Galvanized sub top standard. Sliding glass doors are self-closing and includes a stay-open feature and lock.

Standard interior construction utilizes galvanized steel walls and ceiling. Reinforced floor made from heavy-duty stainless steel to provide long lasting service. Interior, fluorescent lighting is standard.

Environmentally friendly foamed-in-place CFC and HCFC-free polyurethane insulation enhances the structural strength of the cabinet and helps increase energy efficiency.

#### REFRIGERATION

Refrigeration system uses R134a refrigerant, which is CFC and HCFC-free for compliance with environmental safety concerns.

Condensate elimination is automatic and non-electric.

#### ELECTRICAL

Units are wired at factory and ready for connection to a 115/60/1 phase, 15 amp dedicated outlet. 8' long cord and plug set included.

#### SPECIAL FEATURES

- Sliding glass doors
- Door lock
- Door hold-open feature
- 2-pane lowE door glass

Item No. \_\_\_\_\_  
Quantity \_\_\_\_\_

## BEER EQUIPMENT SLIDING GLASS DOOR BACK BAR REFRIGERATORS BB-GSY SERIES

MODELS:  
BB48GSY-1-B



BB48GSY-1-B



\*Note: Not all markings may apply to all model variations.

Available From:

<b>Model Specified</b> _____	<b>Store#</b> _____
<b>Location</b> _____	<b>Quantity</b> _____



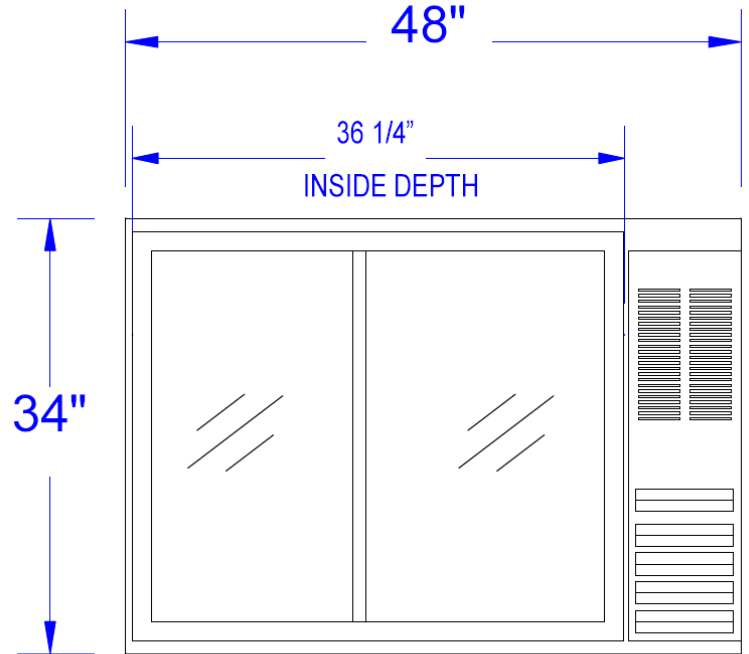
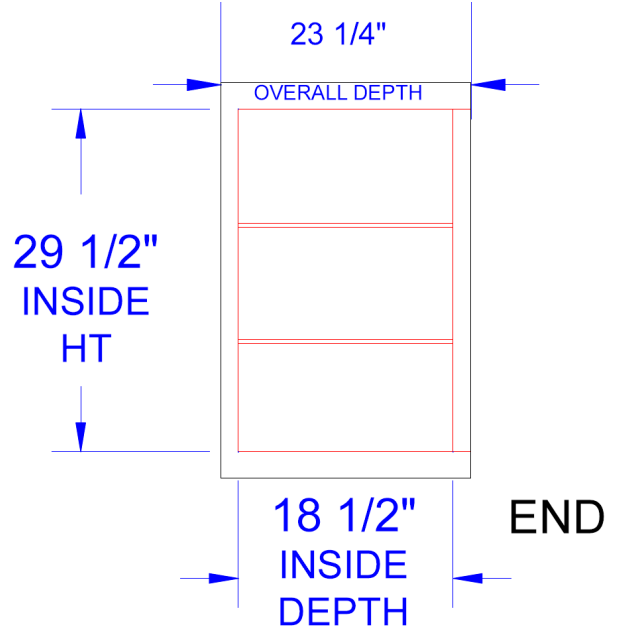
**BEVERAGE-AIR**

**Back Bar Glass Door Refrigerators—Sliding Glass Doors**

**Models: BB48GSY-1-B**

MODEL	BB48GSY-1-B
<b>EXTERNAL DIMENSIONAL DATA</b>	
Length Overall (inches)	48"
Length Overall (mm)	1219
Depth Overall (inches)	23 1/4"
Depth Overall (mm)	591
Height Overall— (inches)	34"
Height Overall—(mm)	864
Number of doors	2
<b>INTERNAL DIMENSIONAL DATA</b>	
NET Capacity (cubic ft.)	11.8
NET Capacity (Liters)	335
Internal Length Overall (inches)	36"
Internal Length Overall (mm)	914
Internal Depth Overall (inches)	18 1/2"
Internal Depth Overall (mm)	470
Internal Height Overall (inches)	29 1/2"
Internal Height Overall (mm)	749
Number of Shelves	4
Number of Kegs (straight wall)	2
<b>ELECTRICAL DATA</b>	
Full Load Amperes 115/60/1	5
<b>ENERGY CONSUMPTION (KWH)</b>	
	3.74
<b>REFRIGERATION DATA</b>	
Horsepower	1/4
<b>WEIGHT DATA</b>	
Gross Weight (Crated lbs)	245
Gross Weight (Crated kg)	111

**PLAN VIEWS**



\*Note: Not all markings may apply to all model variations.

**ELECTRICAL CONNECTION**

Units are pre-wired at factory and include 8' long cord and plug set.



**FRONT**

**BEVERAGE-AIR® CORPORATION**

700 Buffington Road • PO Box 5932 • Spartanburg, SC 29304 USA • (864) 582-8111 • Fax (864) 582-5083 • (888) 845-9800 • www.beverage-air.com

Specifications are subject to change without prior notice. 06/09