



**BEVERAGE-AIR**

**Click here to buy now!**

**Central**<sup>®</sup>  
**RESTAURANT PRODUCTS**  
WHOLESALE EQUIPMENT & SUPPLIES

**MT MARKETEE<sup>™</sup> MERCHANDISERS**

MT49 Black Hinged Door Model  
Hydrocarbon Series

**1-866-285-1252**

MT49<sup>™</sup> Merchandiser: Hinged Door Model



**MT49-1B**

**3 Year Parts/Labor Warranty**  
**Additional 2 Year Compressor Warranty**

**CABINET CONSTRUCTION**

- Standard cabinet exterior finish is heavy duty steel with a black baked on durable coating
- Heavy duty interior construction includes white coated steel
- Electronic temperature control
- Modern one piece grill
- Double pane lowE argon filled glass doors feature outside pane that is tempered for added safety
- Door locks standard
- Self-closing hinged glass door features, pocket door handle
- LED lighting
- Whisper quiet refrigeration system
- Five (5) epoxy coated shelves per section
- 2" Leveling feet

**OPTIONS & ACCESSORIES**

- Extra shelves & clips
- 3" Casters
- Visislide shelving kit
- Reversible door hinge kit

**REFRIGERATION SYSTEM**

- Refrigeration system uses R290 refrigerant to comply with all environmental standards
- Condenser is designed to be low maintenance, and energy efficient.
- Automatic, non-electric evaporator
- Epoxy coated evaporator coil



3779 Champion Blvd., Winston-Salem, NC 27105  
1-888-845-9800 Fax: 1-336-245-6453  
Beverage-Air.com sales@bevair.com



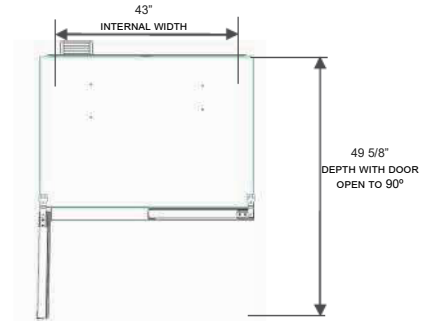
# BEVERAGE-AIR

| MODEL                            | MT49-1B                |
|----------------------------------|------------------------|
| <b>EXTERNAL DIMENSIONAL DATA</b> |                        |
| Width Overall                    | 47 1/8"                |
| Depth Overall                    | 30 1/8"                |
| Height Overall                   | 79"                    |
| Number of Doors                  | 2                      |
| Depth with Door Open 90 °        | 49 5/8"                |
| Clear Door Openings (in)         | 19 3/8" x 60 7/16" (2) |
| Shelf Area (Sq. in)              | 416 11/32"             |
| <b>INTERNAL DIMENSIONAL DATA</b> |                        |
| NET Capacity (cubic ft.)         | 30.55                  |
| Capacity 20 oz                   | 490                    |
| Internal Width Overall (in)      | 43"                    |
| Internal Depth Overall (in)      | 23 1/4"                |
| Internal Height Overall (in)     | 60 1/2"                |
| Internal Height Useable (in)     | 54 13/16"              |
| Number of Shelves                | 10                     |
| <b>ELECTRICAL DATA</b>           |                        |
| Full Load Amperes 115/60/1       | 8.3                    |
| <b>REFRIGERATION DATA</b>        |                        |
| Horsepower                       | 1/2                    |
| Capacity (BTU/Hr)*               | 3615                   |
| <b>WEIGHT DATA</b>               |                        |
| Gross Weight (Crated lbs)        | 441.80 lbs             |
| Height - Crated                  | 84 1/4"                |
| Width - Crated                   | 50 1/8"                |
| Depth - Crated                   | 34"                    |

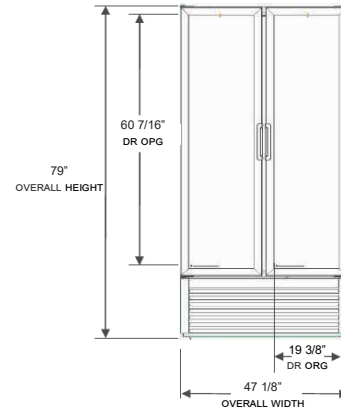
## Glass Hinged Door Model

Models: MT49-1B

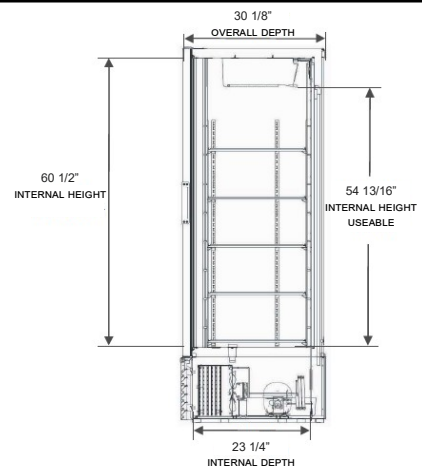
### Model Views



### Plan View



### Elevation View



### Side View

## ELECTRICAL CONNECTION



115/60/1  
NEMA-5-15P

Units pre-wired at factory and include 8' long cord and plug set.



an Ali Group Company



The Spirit of Excellence

3779 Champion Blvd., Winston-Salem, NC 27105  
1-888-845-9800 Fax: 1-336-245-6453  
Beverage-Air.com sales@bevair.com