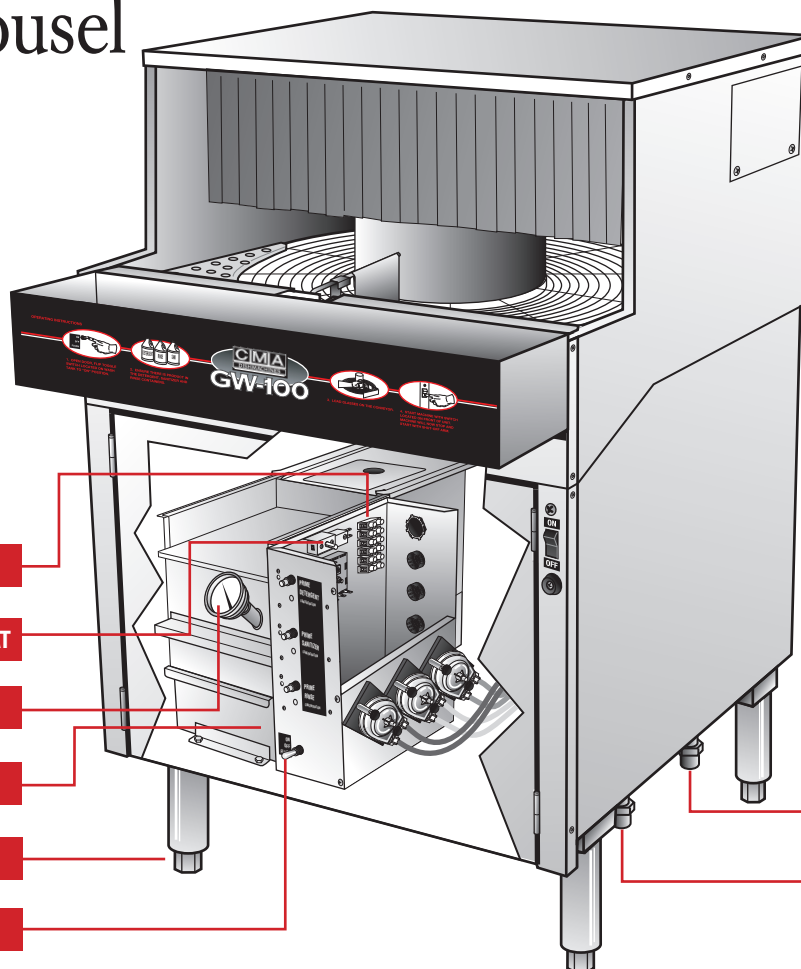


GW-100 Carousel Glasswasher Quick Setup Instructions

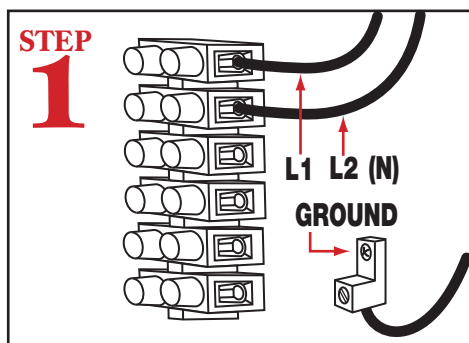


WARNING: Electrical and plumbing connections need to be made by a licensed service person and comply with all Federal, State and Local Health, Electrical, Plumbing and Safety codes.

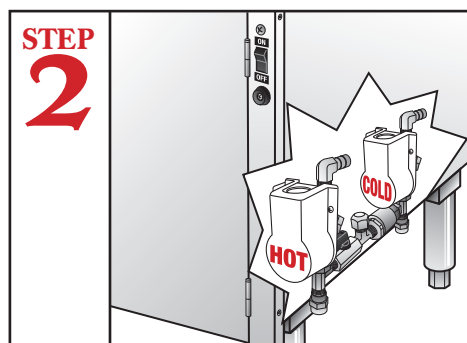


- 1** POWER BLOCK
- 6** HEATER THERMOSTAT
- 6** THERMOMETER
- 3** DRAIN CONNECTION
- 4** LEVELING LEGS
- 5** POWER SWITCH

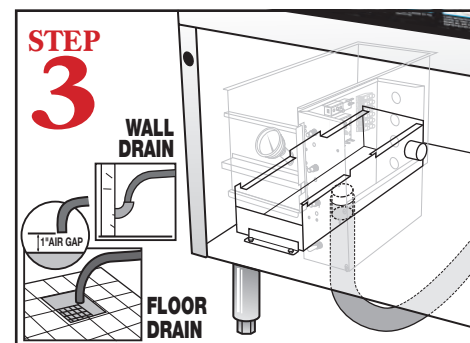
- 2** COLD WATER INLET
- 2** HOT WATER INLET



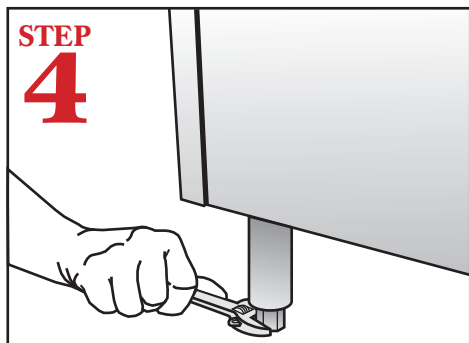
Connect L1 and L2 leads to the power block and ground wire to ground lug.



Connect water lines (hot 140F/160F) and (cold 75F) to water solenoid valves.



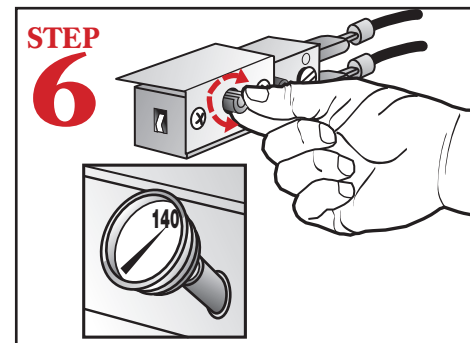
Connect the drain hose to the FLOOR DRAIN. If floor drain is not available connect to the wall. Floor drain must have a (1 inch) air gap between the drain hose and the floor drain.



Level dishmachine by adjusting leveling legs. Dishmachine must be level front and back to ensure proper performance.



Flip power "on-off/flush" switch to "ON" position. Wash tank will automatically fill.

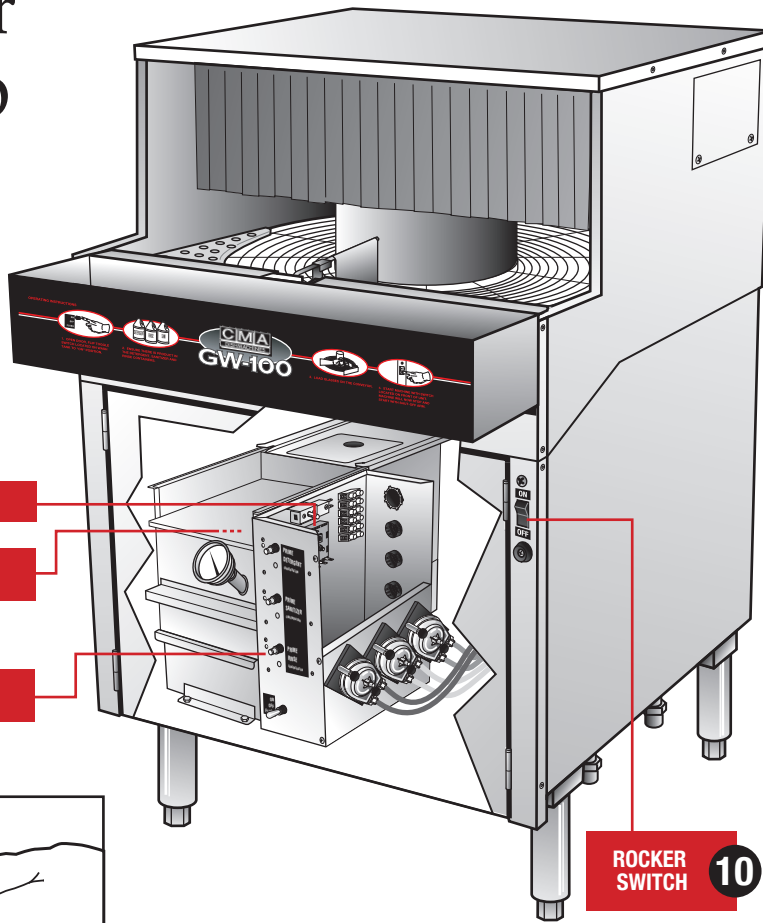


Adjust heater thermostat to 140F.

GW-100 Carousel Glasswasher Quick Setup Instructions



WARNING: Electrical and plumbing connections need to be made by a licensed service person and comply with all Federal, State and Local Health, Electrical, Plumbing and Safety codes.



7 AUTO FILL TIMER

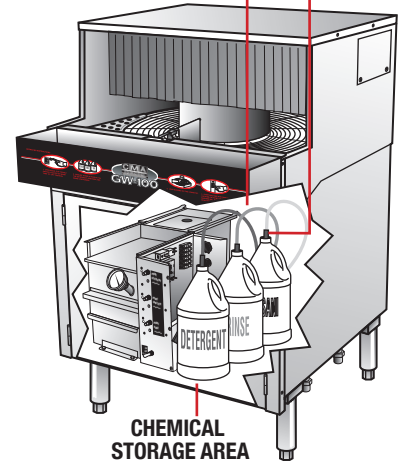
OVERFLOW
DRAIN TUBE

9 PRIMER
PUSH BUTTONS

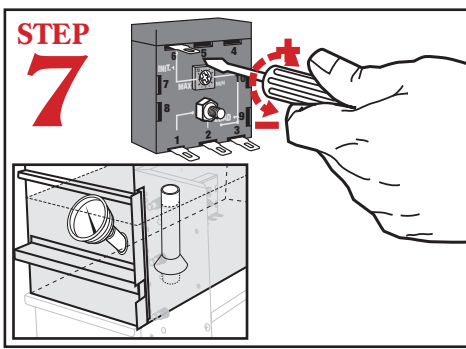
ROCKER
SWITCH **10**

TUBE
STIFFENER **8**

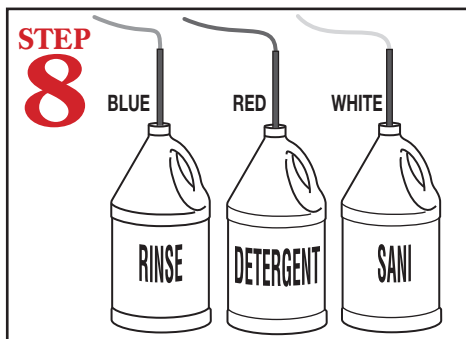
CHEMICAL
TUBING **8**



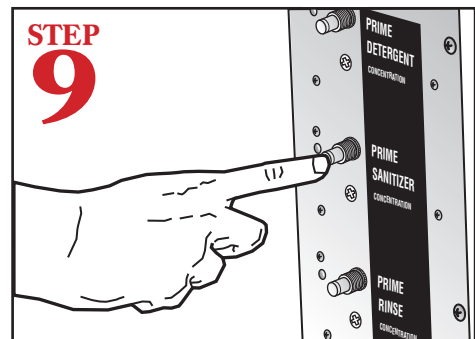
CHEMICAL
STORAGE AREA



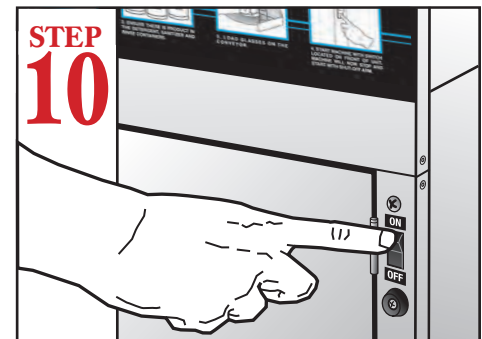
Adjust auto-fill timer to 10 seconds to set water level.



Insert tube stiffener with chemical tubing into corresponding chemical dispensers.



Push each of the chemical prime buttons and hold until the chemical feed tubes are full.



Start conveyor by flipping rocker switch to "ON" position.