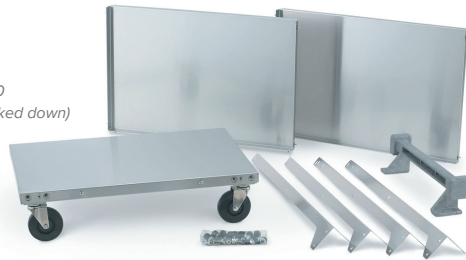


# Stainless Steel Assembled and Knocked-Down Utility Carts

- Heavy-duty welded construction
- Three stainless steel shelves
- ABS handle helps prevent damage to walls and doors
- Rated load capacity is weight distributed evenly on all shelves
- Swivel casters provide quiet and steady transport
- Height between shelves: 12" (30 cm) – 97140 is 12½" (31.3 cm)
- Knock-down design minimizes shipping costs



97320  
(knocked down)



97320  
(shown assembled)



97120

ITEM #	DESCRIPTION	CAPACITY LB (KG)	CASTER SIZE IN (CM)	MAXIMUM DIMENSIONS (L X W X H): IN (CM)	SHELF SIZE IN (CM)	CASE LOT
97120*	Medium-duty, assembled	300 (135)	3½ (9)	27½ x 15½ x 32½ (70 x 40 x 84)	15½ x 24 (39.4 x 60.9)	1
97121	Medium-duty, assembled	300 (135)	3½ (9)	30⅞ x 17¾ x 33¾ (79 x 45 x 86)	17¾ x 27 (45 x 69)	1
97125	Heavy-duty, assembled	400 (180)	4 (10)	27½ x 15½ x 32½ (70 x 40 x 84)	15½ x 24 (39.4 x 60.9)	1
97126	Heavy-duty, assembled	400 (180)	4 (10)	30⅞ x 17¾ x 33¾ (79 x 45 x 86)	17¾ x 27 (45 x 69)	1
97140	Extra-heavy-duty, assembled	500 (225)	4 (10)	39½ x 21 x 33¾ (100 x 54 x 84)	21 x 35 (54 x 90)	1
97320	Medium-duty, knocked-down	300 (135)	3½ (9)	27½ x 15½ x 32½ (70 x 40 x 84)	15½ x 24 (39.4 x 60.9)	1
97326	Heavy-duty, knocked-down	400 (180)	4 (10)	30⅞ x 17¾ x 33¾ (79 x 45 x 86)	17¾ x 27 (45 x 69)	1

\*Shippable via FedEx® or UPS® Note: For replacement part information, refer to VOLLRATH.com.

## Money Saver Knocked-Down (K.D.) Cart

- Chrome-plated tubular frame
- Stainless steel 20-gauge shelves
- 4" (10 cm) casters provide quiet and steady transport
- Overall height: 36½" (92.7 cm)
- Height between shelves: 8½" (22 cm)
- Shippable via FedEx or UPS®



97105

ITEM #	DESCRIPTION	CAPACITY: LB (KG)	SHELF DIMENSIONS: IN (CM)	CASE WEIGHT: LBS (KG)	SHIPPING CUBE	CASE LOT
97105	3-shelf	400 (180)	24 x 16 (61 x 41)	36 (16.3)	1.904	1
97106	3-shelf	500 (225)	33 x 21 (85 x 54)	49.6 (22.5)	2.283	1

Note: For replacement part information, refer to VOLLRATH.com.