

## cash & carry

Easy to merchandise in cash and carry showrooms. Innovative, lighter weight packaging features less corrugate and an appealing POS merchandising label.

4 shelf complete stationary units with vented shelf plates will be available in the following sizes:

21"D x 48"L x 72"H	540mm x 1220mm x 1830mm
21"D x 60"L x 72"H	540mm x 1530mm x 1830mm
24"D x 48"L x 72"H	610mm x 1220mm x 1830mm
24"D x 60"L x 72"H	610mm x 1530mm x 1830mm



## optional accessories

Available to enhance Elements storage systems.  
For detailed product information please visit [www.cambro.com](http://www.cambro.com)

- dunnage stands
- corner connectors
- premium and standard casters
- donut bumpers
- high density track kits
- seismic foot
- wall fastener
- divider bars
- security cage
- tray slide rack

Click here to buy now!

**Central**  
RESTAURANT PRODUCTS

1-866-285-1252



**CAMBRO**  
TRUSTED FOR GENERATIONS™

5801 Skylab Road, Huntington Beach, CA 92647  
Telephone: (714) 848-1555 Toll Free: (800) 854-7631 FAX: (714) 842-3430  
Customer Service: (800) 833-3003  
© Cambro Manufacturing Company. Printed in the U.S.A.  
LIT1035



Cambro is a proud recipient of  
the U.S. President's E-Award  
for Excellence in Exporting.

the future | of shelving



**Camsh Ivi**  
ELEMENTS SERIES



**78" traverse**  
(1980 mm)

Durable composite material performs even in the toughest environments, including hot, cold, dry, wet and humid storage areas. Strong, composite technology adapts well to extreme temperatures, and is impervious to moisture and chemicals. Non-corrosive, Elements won't peel, dent, warp or rust—ever.



**the longest and strongest in the foodservice industry**

Elements exclusive 78" (1980 mm) traverse holds up to 600 lbs. (272 KG) per shelf for excellent high capacity storage. Starter and add-on units share a common post with no loss of weight bearing capacity, allowing for maximum use of storage space.

**configurations for every need**



starter unit



starter unit + add-on unit



starter unit + corner unit



u-shaped unit



high-density storage system

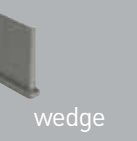


mobile unit

**camshelving® elements components**



vented and solid shelf plates



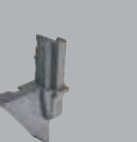
wedge



dovetails



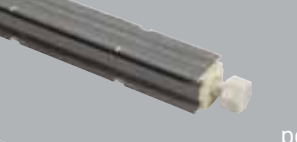
top and bottom post connectors



mobile dovetails



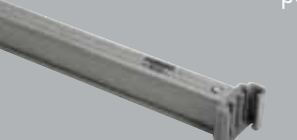
corner connectors



post



dunnage stand



stationary traverse



mobile traverse



casters

**weight capacity**

	traverse length	weight bearing capacity	
		per shelf	per unit
Single Unit (4 shelves)	36" 48" 910 mm 1220 mm	800 lbs. 363 KG	3200 lbs. 1451 KG
Single Unit (4 shelves)	54" 78" 1380 mm 1980 mm	600 lbs. 272 KG	2400 lbs. 1089 KG
Dunnage Stand	54" 78" 1380 mm 1980 mm	1000 lbs. 454 KG bottom shelf only	
Corner Unit (attached)	36" 48" 910 mm 1220 mm	400 lbs. 181 KG	1600 lbs. 726 KG
Mobile Unit	36" 48" 910 mm 1220 mm		750 lbs. 340 KG

Dunnage Stands are recommended for traverses 54" (1380 mm) or longer.

Corner Connectors are recommended for use on traverses 48" (1220 mm) or less.

Due to the weight bearing capacity of casters, maximum weight load on an entire Mobile Elements unit is 750 lbs. (340 KG).

**strong & durable**



## innovative, strong composite material withstands all elements

- designed for all areas of foodservice operations
- ideal for wet, dry, cold or hot environments
- withstands temperatures as cold as -36°F (-38°C) or warm environments up to 190°F (88°C)
- resistant to moisture; won't rust or corrode



-36° to 190°



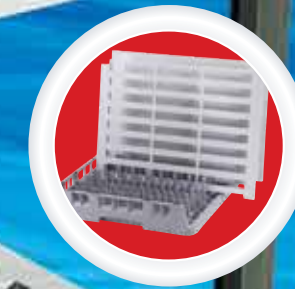
## strong technology

- composite material is as strong as steel
- 78" (1980 mm) traverse is the longest and strongest in the industry; supports loads up to 600 lbs. (272 KG) per shelf
- up to 60% lighter in weight than steel; easy to set up, adjust and change configurations



## hygienic design

- shelf plates are easily removed for thorough dishwasher cleaning
- Camguard® antimicrobial protection is permanently embedded in shelf plates
- non-porous surface simply wipes clean



## shelving for life

- impervious to moisture, salt and chemicals
- won't peel, dent or warp; remains rust-free
- lifetime warranty against corrosion and rust



**strong technology.  
hygienic design. affordable solution.**

### It's here |

Camshelving® Elements is the future of foodservice shelving. Elements delivers what foodservice operators have been asking for: an affordable solution without compromise. Utilizing advanced materials and innovative design, it provides extraordinary strength, increased durability and enhanced food safety.