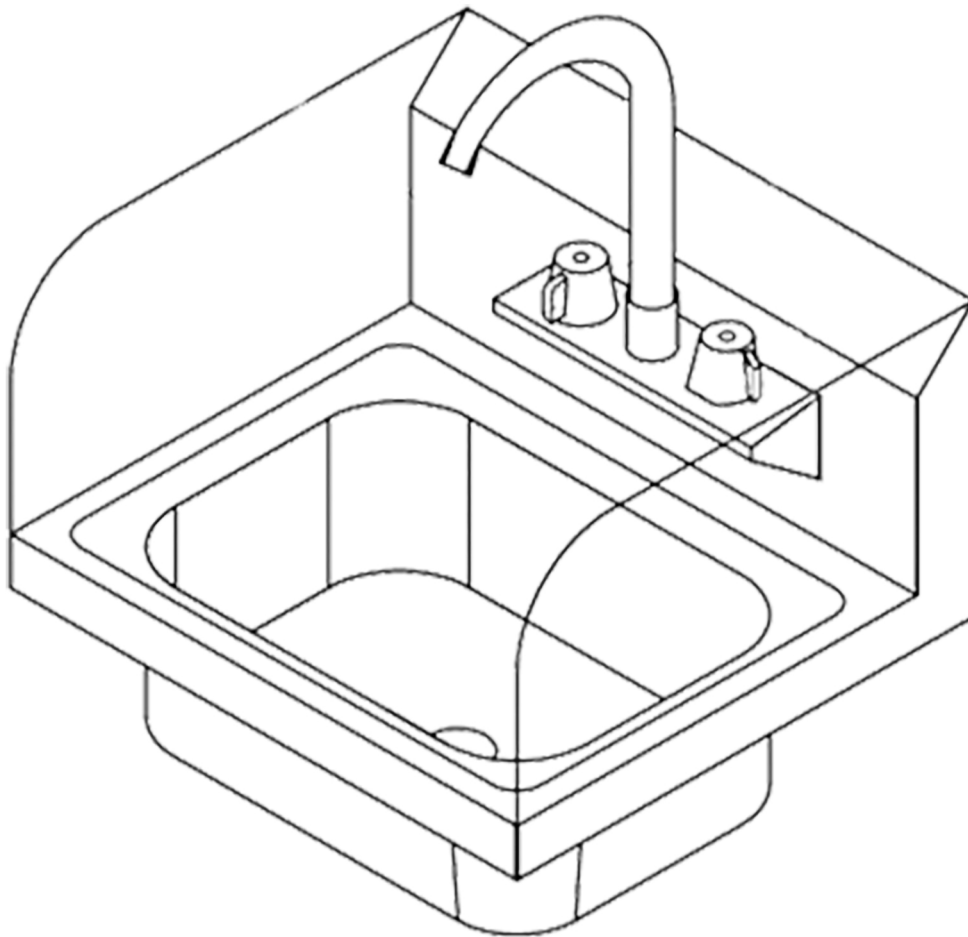


KRATOS

COMMERCIAL HAND SINK MANUAL



Central Restaurant Products®

7750 Georgetown Road • Indianapolis, IN 46268

800.222.5107 • www.centralrestaurant.com

COMMERCIAL HAND SINK MANUAL

Thank you for choosing to purchase from Kratos. Every Kratos product is manufactured with the customer in mind by providing the best value without sacrificing the quality. Kratos hand sinks are NSF approved so you can have the peace of mind they will meet your location's needs and budget constraints. These hand sinks are made of high quality, 20 gauge 304 stainless steel. They include a gooseneck faucet, drain and mounting bracket. Whatever your need is presently or in the future, look to Kratos as your full-service solution.

TABLE OF **Contents**

03 RECEIVING INSTRUCTIONS

04 ASSEMBLY INSTRUCTIONS

06 CLEANING INSTRUCTIONS

07 WARRANTY INFORMATION

COMMERCIAL HAND SINK MANUAL

Receiving & Inspecting EQUIPMENT

Care must be taken during unloading so the equipment is not damaged while being moved into the building.

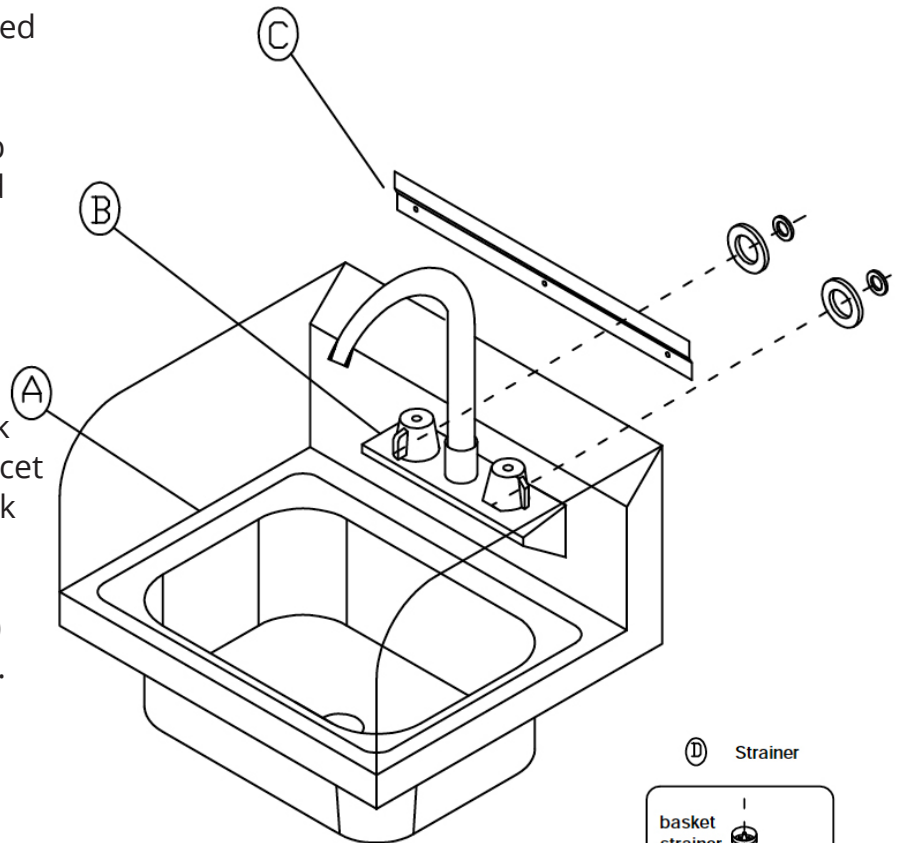
1. Visually inspect the exterior of the package. Any damage should be noted and reported to the delivering carrier immediately.
2. If damaged, open and inspect the contents with the carrier.
3. In the event that the exterior is not damaged, yet upon opening, there is concealed damage to the equipment, notify the carrier. Notification should be made verbally as well as in written form.
4. Request an inspection by the shipping company of the damaged equipment. This should be done within 10 days from receipt of the equipment.
5. Freight carriers can supply the necessary damage forms upon request.
6. Retain all crating material until an inspection has been made or waived.

COMMERCIAL HAND SINK MANUAL

Assembly INSTRUCTIONS

Space Saver Wall Mount Hand Sink with Backsplash Wall Mount Faucet

1. Remove and unpack all components. The drain components are all located in a small box with the sink. The faucet and mounting bracket are wrapped in protective bubble wrap.
2. Ensure you have all pieces outlined below.
 - a. Hand Sink (1)
 - b. Faucet (1)
 - c. Wall mount Bracket (1)
 - d. Drain Basket assembly (1)
3. Remove the locknuts from the back of the faucet (B) and attach the faucet to the sink (A). The holes in the sink are spaced/centered 4" to line up with the faucet.
4. Secure the faucet (B) to the sink (A) with a wrench. Do not overtighten.
5. To attach the drain basket assembly (D) to the sink, refer to the assembly drawing.
6. Contact a plumber to connect the water lines and drain pipe before mounting to the wall.
7. Everything included is outlined in the image at right. Other plumbing fittings/accessories may be required to meet your location's specific needs.

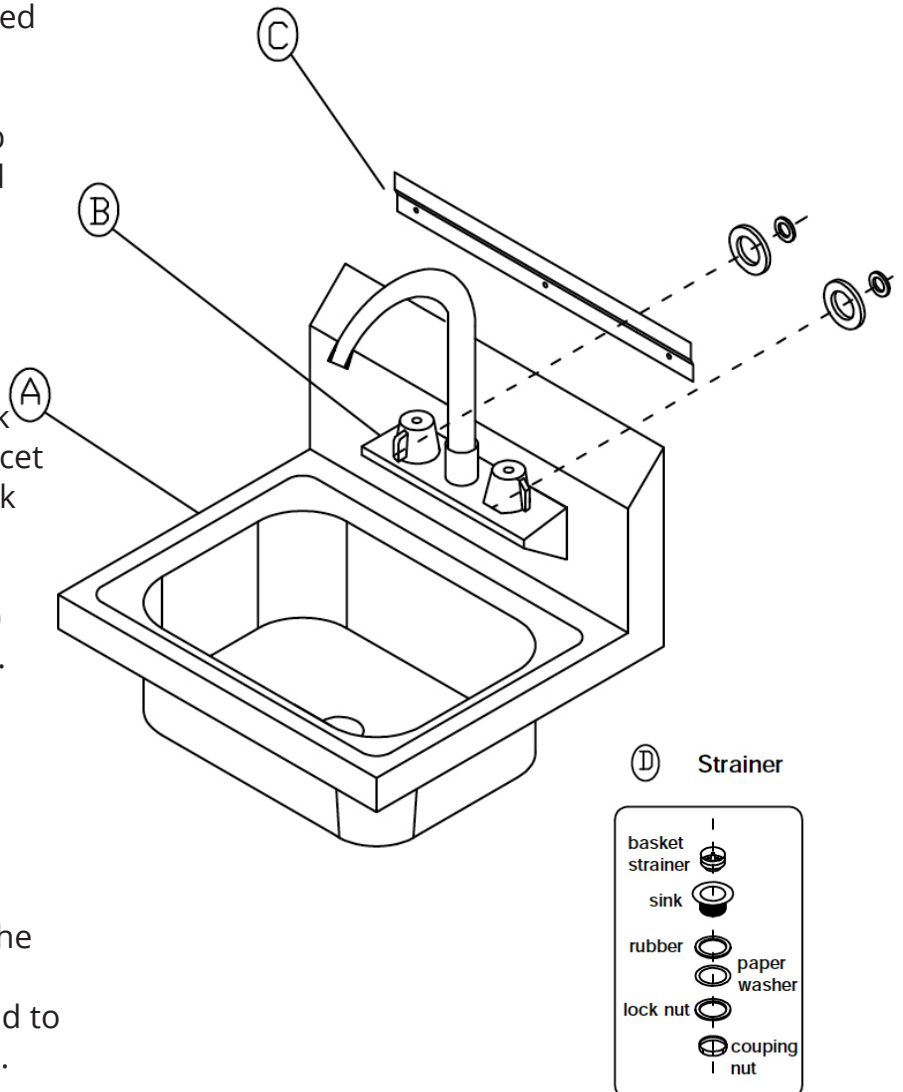


COMMERCIAL HAND SINK MANUAL

Assembly INSTRUCTIONS

Space Saver Wall Mount Hand Sink with Backsplash Wall Mount Faucet

1. Remove and unpack all components. The drain components are all located in a small box with the sink. The faucet and mounting bracket are wrapped in protective bubble wrap.
2. Ensure you have all pieces outlined below.
 - a. Hand Sink (1)
 - b. Faucet (1)
 - c. Wall mount Bracket (1)
 - d. Drain Basket assembly (1)
3. Remove the locknuts from the back of the faucet (B) and attach the faucet to the sink (A). The holes in the sink are spaced/centered 4" to line up with the faucet.
4. Secure the faucet (B) to the sink (A) with a wrench. Do not overtighten.
5. To attach the drain basket assembly (D) to the sink, refer to the assembly drawing.
6. Contact a plumber to connect the water lines and drain pipe before mounting to the wall.
7. Everything included is outlined in the image at right. Other plumbing fittings/accessories may be required to meet your location's specific needs.



COMMERCIAL HAND SINK MANUAL

Cleaning INSTRUCTIONS

1. Use a soft cloth or nylon brush to clear the sink of debris before cleaning.
 - a. Do not use stiff cleaning tools or scrubbers that can scratch the stainless steel and will result in a voided warranty.
2. Wash with a mild soap or detergent.
 - a. Do not use harsh or abrasive chemicals on your equipment. This will cause damage to the equipment and void the warranty
3. Follow by rinsing with clean water
4. Wipe dry with a soft cloth or disposable wipe.

COMMERCIAL HAND SINK MANUAL

Warranty INFORMATION

90 Day Limited Warranty

Kratos offers a 90 day warranty to the original purchaser of new equipment, the model of equipment will be free of defects in material and workmanship for a period of 90 days from the date of delivery. Warranty is not transferrable. Kratos, at its own discretion, will provide replacement components, replace the entire unit or refund the purchase price to satisfy the warranty obligation.

The 90 day limited warranty does not cover:

- Failure to install and/or use equipment within proper operating conditions as specified by Kratos.
- Outdoor use will void the warranty. The finish is not guaranteed in mobile applications where the equipment can be damaged due to not being secured to the floor.
- Products that have been modified, abused, or misused. Any products that have been exposed to corrosive or other cleaners not intended for use on stainless steel will void the warranty.
- Any products sold outside the contiguous United States.
- Any products where the original sale cannot be determined. No order #, invoice or receipt to provide proof of purchase will result in no warranty coverage.
- Labor or service not authorized by Kratos is not covered under this warranty.
- Freight damage must be made at time of delivery and addressed with the carrier for compensation.
- Kratos will not be liable for any parties that experience loss of product, consequential damage, lost business or any other expenses.

For Warranty Inquiries

To obtain warranty information or make a claim against this warranty, please contact via email at sales@centralrestaurant.com or by phone at **800-215-9293**.