



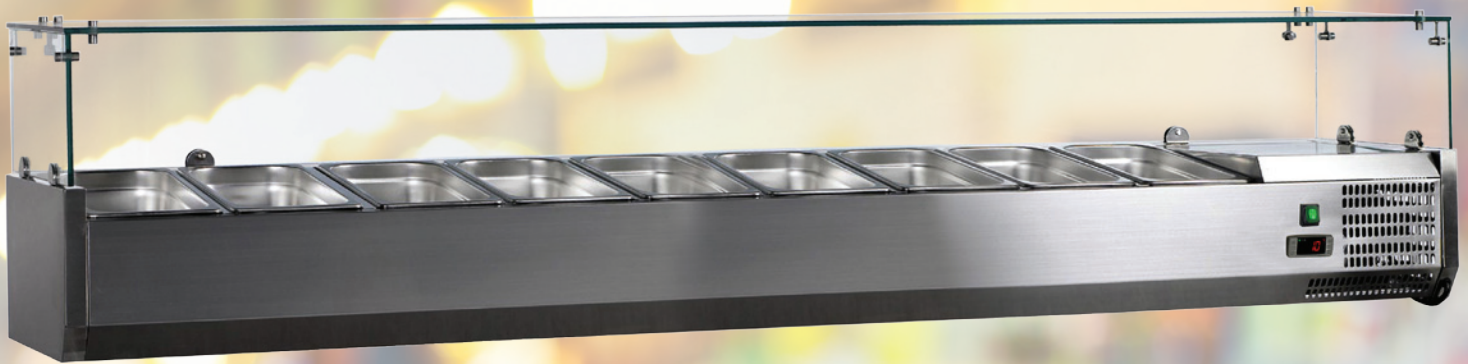
REFRIGERATION

SERVING THE FOOD INDUSTRY SINCE 1951

REFRIGERATED TOPPING RAILS WITH SNEEZE GUARD

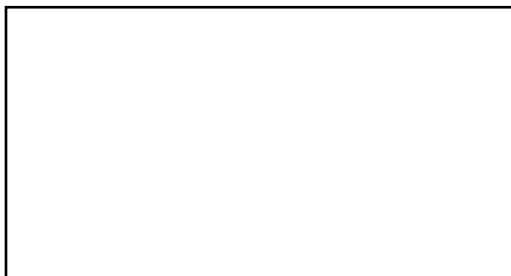
Item: 46680

Model: RS-CN-0009-P



46680 Shown
Pans not included

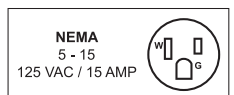
These refrigerated topping rails are perfectly designed to store and keep all ingredients fresh to a certain temperature holding time. Easy to accommodate various combination size of plastics or stainless steel table pans.



Authorized Dealer



WARRANTY
PARTS AND LABOR



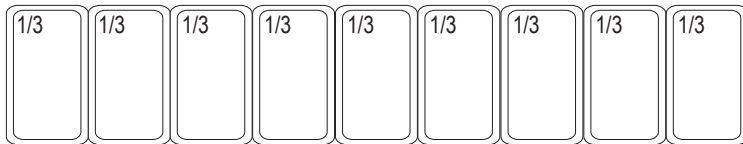
REFRIGERATION

REFRIGERATED TOPPING RAILS WITH SNEEZE GUARD

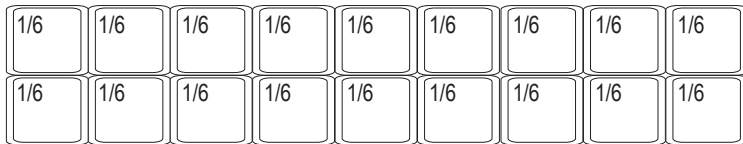


46680 Shown
Pans not included

Pan Configuration for Item 46680

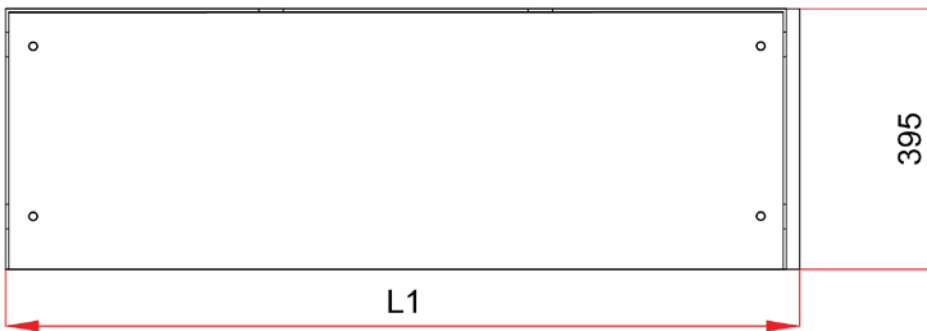
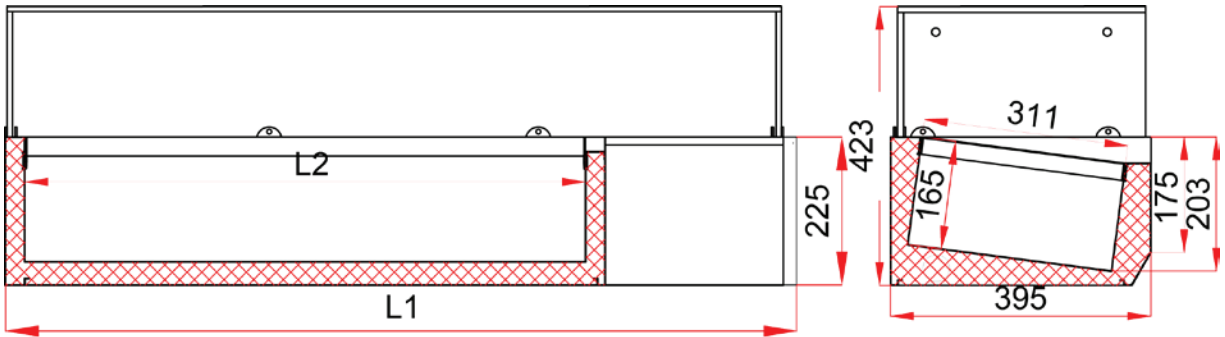


or



TECHNICAL SPECIFICATION

ITEM NUMBER	46680
MODEL	RS-CN-0009-P
PAN CAPACITY	9 x GN 1/3 or 18 x GN1/6
REFRIGERANT	R600a
ELECTRICAL	120V / 60Hz / 1Ph
AMPS	2A
POWER	140W
TEMPERATURE RANGE	36~50°F
PLUG TYPE	5-15P
NET DIMENSIONS	78.7" x 15.5" x 17" 2000 x 395 x 435mm
GROSS DIMENSIONS	80" x 17" x 18" 2040 x 435 x 460mm
NET WEIGHT	80 kg. 176 lbs.
GROSS WEIGHT	128 kg. 282 lbs.
CERTIFICATIONS	ETL



	46680
L1	2000
L2	1650

OMCAN INC.

Telephone: 1-800-465-0234

Fax: (905) 607-0234

E-mail: sales@omcan.com

Website: www.omcan.com



Follow us to keep up to date with the latest news and offers

