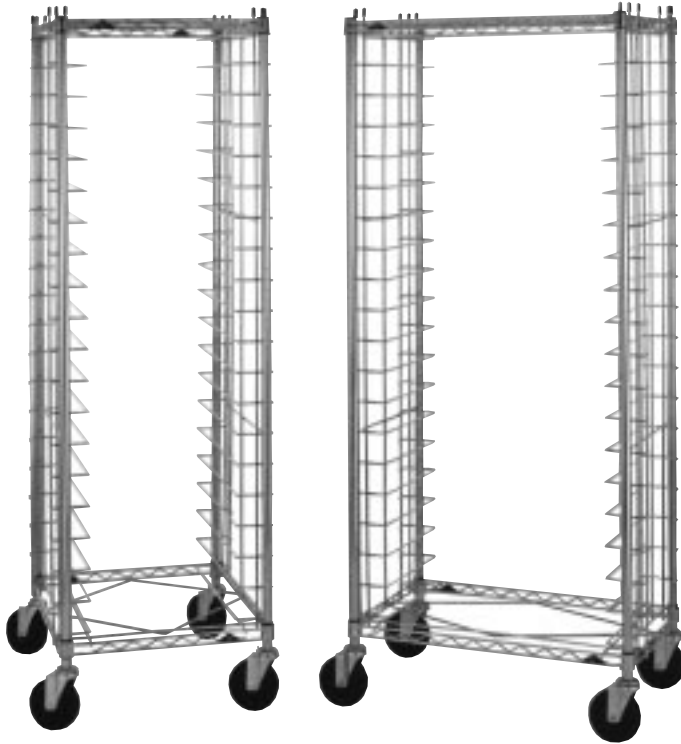




Item# \_\_\_\_\_

Job \_\_\_\_\_



## METRO MOBILE END- AND SIDE-LOAD WIRE BUN PAN RACKS

- **Cost Effective:** Metro's Bun Pan Racks offer an economical solution for sturdy, dependable storage and transport of bun pans.
- **Two Styles Available:** End-load models allow for optimum floor space utilization, while side-load models offer a larger tray landing area. Both styles can be loaded on one side and unloaded from the other for maximum efficiency and convenience.
- **Choice of Slide Spacing:** Each style is available with a choice of slide spacings — 1½" (38mm), which has a 38 pan capacity, and 3" (76mm), which has a 20 pan capacity.
- **UPS Shippable** in one box for lower freight costs.
- **Quick, Secure Assembly:** Units assemble quick and easy without special tools.
- **Lightweight, Maneuverable:** 5" (127mm) swivel casters promote ease of mobility.
- **Super Erecta Brite™ Finish**



**End- and Side-Load Wire Bun Pan Racks**

**13.42**



**InterMetro Industries Corporation**  
North Washington Street  
Wilkes-Barre, PA 18705  
[www.metro.com](http://www.metro.com)

Copyright © 1999 InterMetro Industries Corporation

Job \_\_\_\_\_

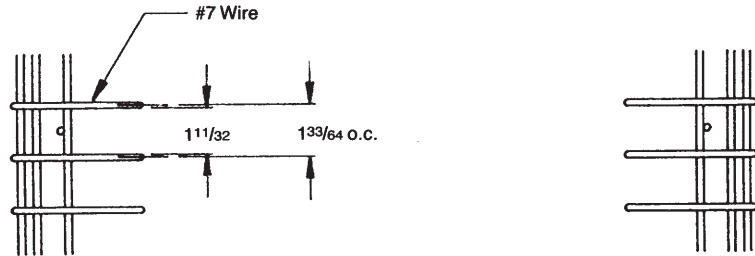


METRO MOBILE  
 END- AND SIDE-LOAD  
 WIRE BUN PAN RACKS

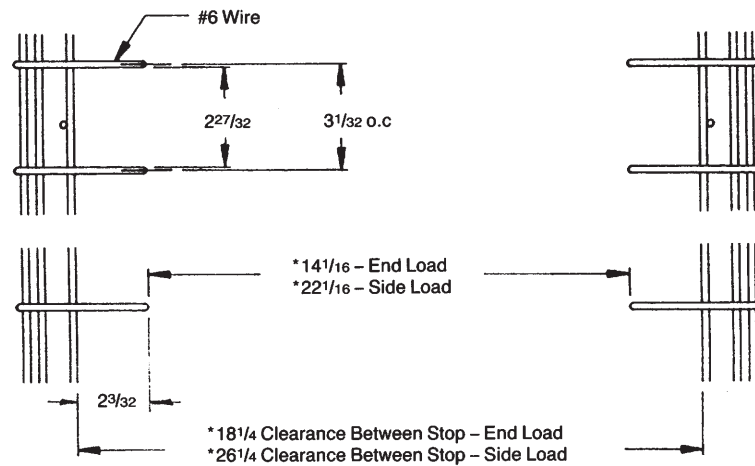
**SPECIFICATIONS:**

- **Slides, Frame, Posts:** Super Erecta Brite™ finish with Metrolac protective coating.
- **Casters:** 5" (127mm) stem/swivel casters with resilient tread.

**RE1/RS1 Slide Spacing**



**RE3/RS3 Slide Spacing**



\*Dimensions are for an unloaded cart.  
 Cart designed for bottom loading 18" x 26" bun pans.  
 200 lb. unit wt. capacity with up to 30 lb. on any one level.

**DIMENSIONS:**

Model No.	Description	Height		Width		Length		Slide Spacing		Pan Capacity		Approx. Pkd. Wt.	
		(in.)	(mm)	(in.)	(mm)	(in.)	(mm)	(in.)	(mm)	No.	Size (in.)	(lbs.)	(kg)
RE1	End-Load	69	1750	21 <sup>3</sup> / <sub>4</sub>	550	27	685	1 <sup>1</sup> / <sub>2</sub>	40	38	18x26	61	28
RE3	End-Load	69	1750	21 <sup>3</sup> / <sub>4</sub>	550	27	685	3	75	20	18x26	70	32
RS1	Side-Load	69	1750	19 <sup>1</sup> / <sub>2</sub>	490	30	760	1 <sup>1</sup> / <sub>2</sub>	40	38	18x26	61	28
RS3	Side-Load	69	1750	19 <sup>1</sup> / <sub>2</sub>	490	30	760	3	75	20	18x26	70	32

**ACCESSORIES:**

Model No.	Description
9992DB	3 <sup>1</sup> / <sub>2</sub> " (90mm) Diameter Rubber Donut Bumper
9992N	5 <sup>1</sup> / <sub>2</sub> " (140mm) Diameter Rubber Donut Bumper

Manufactured by:  
**InterMetro Industries Corp.**  
 North Washington Street  
 Wilkes-Barre, PA 18705  
 www.metro.com

Phone 570-825-2741  
 FAX 570-825-2852  
 For Product Information, call 1-800-433-2232  
 For Customer Service, call 1-800-992-1776



**InterMetro Industries Corporation**  
 North Washington Street  
 Wilkes-Barre, PA 18705  
 www.metro.com

L02-074  
 5/99 BJ  
 Printed in U.S.A.  
 Information and specifications are subject to change without notice. Please confirm at time of order.