

Drop-In Self-Leveling Dispensers

Open, Shielded and Heated



Model 4009
Open



Model 5009
Shielded



Dispensing level is easily adjusted by attaching or detaching springs. No tools required.

Benefits

- Plates are concealed from view
- Reduces breakage

Features

- Dispensing height is easily field adjustable without tools
- Open Shielded and heated versions available
- 26" high stack capacity
- Accommodate plates from 5" to 12¼" in 9 dispenser sizes
- Heated models feature thermostatic control, 100°F - 180°F (38°C - 82°C)

Specifications:

Unit shall be of welded stainless steel construction. Dispensers shall hang from surface opening by an 18-gauge flange ring and feature three each 22-gauge vertical side supports welded to 20-gauge bottom plate. Self-leveling dish carriage shall be of welded stainless steel construction and shall travel vertically in dispenser tube with nylon guides for smooth operation. Carriage shall have 22-gauge removable dish platform. Unit shall feature flange mounted perimeter extension springs, which are detachable from the dish carriage to provide adjustment without tools for different weight dishes. Unit shall have a vertical stacking capacity of 25" (635 mm). Unit shall be NSF listed.

Heated Models Only: Unit shall be 120 VAC 60 Hz and shall have 5' (1524 mm) power supply cable with L5-15P NEMA twist lock plug for 120 VAC. Dispenser tubes shall be fully enclosed in 22-gauge stainless steel, and have a circular bottom mounted 300 or 450 watt heater element to provide convection heat. Heating system shall feature thermostatic control in a tamper protective location with safe high-end shut-off. Control shall have Infinite settings between low and high temperature cut-outs. Thermostat shall be field adjustable for average interior air temperature between 100° F (38° C) and 175° F (79° C) at middle adjustable thermostatic setting. On-off switch and power indicator light shall be mounted on top flange of dispenser. Average dish temperature rise of 40° F (22° C) above ambient shall be achieved within one hour of initial heating cycle at middle adjustable thermostatic setting. Unit shall be UL listed.

Spec. # _____

AIA # _____



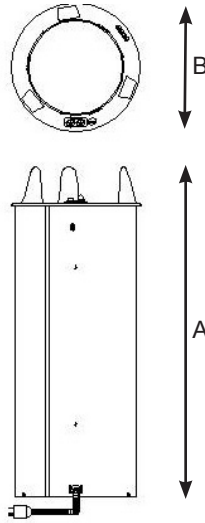
Lakeside Manufacturing, Inc.

4900 West Electric Avenue • West Milwaukee, WI 53219 U.S.A.

800-558-8565 • 414-902-6400 • Fax 414-902-6446 • www.eLakeside.com

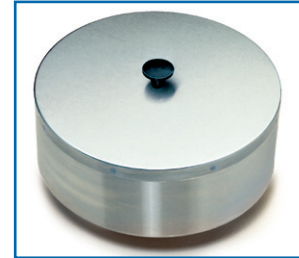
Drop-In Self-Leveling Dispensers

Open, Shielded and Heated



Options:

- Stainless steel dispenser tube covers
- 208/240 VAC 60 Hz (heated models)
- 220 VAC 50 Hz (heated models)



Stainless Steel Dispenser Tube Cover

Model Information:

Model	Accommodates Plate Size		Height To Ring (A)		Top Ring Diameter (B)		Counter Cut-Out		Electrical		lbs.	(kg.)
									Watts	Amps		
Open Models												
4000	Up to 5"	Up to (127)	27 ³ / ₄ "	(705)	8-1/4"	(210)	7-7/16"	(189)	—	—	10	(4.5)
4005	5-1/8" to 5-3/4"	(130 to 146)	27 ³ / ₄ "	(705)	9"	(229)	8-3/16"	(208)	—	—	11	(4.9)
4006	5-7/8" to 6-1/2"	(149 to 165)	27 ³ / ₄ "	(705)	9-3/4"	(248)	8-15/16"	(227)	—	—	12	(5.4)
4007	6-5/8" to 7-1/4"	(168 to 184)	27 ³ / ₄ "	(705)	10-1/2"	(267)	9-11/16"	(246)	—	—	12	(5.4)
4008	7-3/8" to 8-1/8"	(200 to 206)	27 ³ / ₄ "	(705)	11-3/8"	(289)	10-9/16"	(268)	—	—	12	(5.4)
4009	8-1/4" to 9-1/8"	(210 to 232)	27 ³ / ₄ "	(705)	12-3/8"	(314)	11-9/16"	(294)	—	—	15	(6.8)
4010	9-1/4" to 10-1/8"	(235 to 257)	27 ³ / ₄ "	(705)	13-3/8"	(340)	12-9/16"	(319)	—	—	16	(7.3)
4011	10-1/4" to 11"	(260 to 279)	27 ³ / ₄ "	(705)	14-1/4"	(356)	13-9/16"	(344)	—	—	17	(7.7)
4012	11-1/4" to 12-1/4"	(260 to 311)	27 ³ / ₄ "	(705)	15-7/8"	(403)	14-11/16"	(373)	—	—	18	(8.2)
Shielded Models												
5000	Up to 5"	Up to (127)	28"	(711)	8-1/4"	(210)	7-7/16"	(189)	—	—	15	(6.8)
5005	5-1/8" to 5-3/4"	(130 to 146)	28"	(711)	9"	(229)	8-3/16"	(208)	—	—	16	(7.3)
5006	5-7/8" to 6-1/2"	(149 to 165)	28"	(711)	9-3/4"	(248)	8-15/16"	(227)	—	—	17	(7.7)
5007	6-5/8" to 7-1/4"	(168 to 184)	28"	(711)	10-1/2"	(267)	9-11/16"	(246)	—	—	18	(8.2)
5008	7-3/8" to 8-1/8"	(200 to 206)	28"	(711)	11-3/8"	(289)	10-9/16"	(268)	—	—	20	(9.1)
5009	8-1/4" to 9-1/8"	(210 to 232)	28"	(711)	12-3/8"	(314)	11-9/16"	(294)	—	—	23	(10.4)
5010	9-1/4" to 10-1/8"	(235 to 257)	28"	(711)	13-3/8"	(340)	12-9/16"	(319)	—	—	24	(10.9)
5011	10-1/4" to 11"	(260 to 279)	28"	(711)	14-1/4"	(356)	13-9/16"	(344)	—	—	26	(11.8)
5012	10-1/4" to 12-1/4"	(260 to 311)	28"	(711)	15-7/8"	(403)	14-11/16"	(373)	—	—	29	(13.2)
Heated Models												
6000	Up to 5"	Up to (127)	28"	(711)	8-1/4"	(210)	7-7/16"	(189)	300	2.5	18	(8.2)
6005	5-1/8" to 5-3/4"	(130 to 146)	28"	(711)	9"	(229)	8-3/16"	(208)	300	2.5	19	(8.6)
6006	5-7/8" to 6-1/2"	(149 to 165)	28"	(711)	9-3/4"	(248)	8-15/16"	(227)	300	2.5	20	(9.1)
6007	6-5/8" to 7-1/4"	(168 to 184)	28"	(711)	10-1/2"	(267)	9-11/16"	(246)	300	2.5	21	(9.5)
6008	7-3/8" to 8-1/8"	(200 to 206)	28"	(711)	11-3/8"	(289)	10-9/16"	(268)	300	2.5	23	(10.4)
6009	8-1/4" to 9-1/8"	(210 to 232)	28"	(711)	12-3/8"	(314)	11-9/16"	(294)	450	3.8	26	(11.8)
6010	9-1/4" to 10-1/8"	(235 to 257)	28"	(711)	13-3/8"	(340)	12-9/16"	(319)	450	3.8	28	(12.7)
6011	10-1/4" to 11"	(260 to 279)	28"	(711)	14-1/4"	(356)	13-9/16"	(344)	450	3.8	30	(13.6)
6012	10-1/4" to 12-1/4"	(260 to 311)	28"	(711)	15-7/8"	(403)	14-11/16"	(373)	450	3.8	32	(14.5)

Measurements in () denote metric millimeters, unless otherwise specified.



Lakeside Manufacturing, Inc.

4900 West Electric Avenue • West Milwaukee, WI 53219 U.S.A.
800-558-8565 • 414-902-6400 • Fax 414-902-6446 • www.eLakeside.com

Drop-in Self-Leveling Dispensers

Open, Shielded and Heated, ADA Height

Dispensing level is easily adjusted by attaching or detaching springs. No tools required.

- Models available to fit plates from 5" to 12 1/4".
- Overall height allows for fit into ADA height-compliant counters.
- All models have a 22" stacking capacity.
- Easy-Glide™ design provides quiet, non-stick operation.
- Heated dispensers feature thermostatic control. Thermostat minimum 100°F (38°C) - maximum 180°F (82°C).
- High-strength stainless steel uprights.



Specifications

Unit shall be of welded stainless steel construction. Dispensers shall hang from surface opening by an 18-gauge flange ring and feature three each 22-gauge vertical side supports welded to 20-gauge bottom plate. Overall height from flange ring to base of 25" shall allow for fit into ADA height-compliant counters. Self-leveling dish carriage shall be of welded stainless steel construction and shall travel vertically in dispenser tube with nylon guides for smooth operation. Carriage shall have 22-gauge removable dish platform. Unit shall feature flange mounted perimeter extension springs, which are detachable from the dish carriage to provide adjustment without tools for different weight dishes. Unit shall have a vertical stacking capacity of 22". Unit shall be NSF listed.

Heated Models Only: Unit shall be 120 VAC 60 Hz and shall have 5' power supply cable with L15-5P NEMA twist lock plug for 120 VAC. Dispenser tubes shall be fully enclosed in 22-gauge stainless steel, and have a circular bottom mounted 300 or 450 watt heater element to provide convection heat. Heating system shall feature thermostatic control in a tamper protective location with safe high-end shut-off. Control shall have Infinite settings between low and high temperature cut-outs. Thermostat shall be field adjustable for average interior air temperature between 100° F (38° C) and 175° F (79° C) at middle adjustable thermostatic setting. On-off switch and power indicator light shall be mounted on top flange of dispenser. Average dish temperature rise of 40° F (22° C) above ambient shall be achieved within one hour of initial heating cycle at middle adjustable thermostatic setting. Unit shall be UL listed.

Optional Accessories

- Stainless steel dispenser tube covers
- 208/240 VAC 60Hz (heated models)
- 220 VAC 50 Hz (heated models)

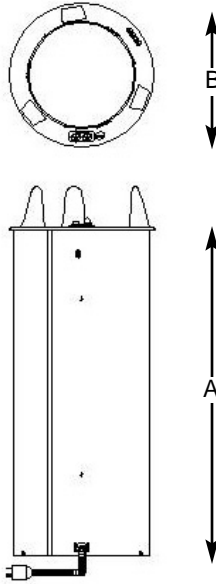


Lakeside Manufacturing, Inc.

4900 West Electric Avenue • West Milwaukee, WI 53219 U.S.A.
800-558-8565 • 414-902-6400 • Fax 414-902-6446 • www.eLakeside.com

Drop-in Self-Leveling Dispensers

Open, Shielded and Heated, ADA Height



AutoCAD drawings available through KCL CADalog

Dimensions

Model	Accommodates Plate Size		Height To Ring		Top Ring Diameter		Counter Cut-Out		Electrical Watts	Amps	lbs.	(kg.)
Open Models												
400025	Up to 5"	Up to (127)	25"	(635)	8-1/4"	(210)	7-7/16"	(189)	-	-	10	(4.5)
400525	5-1/8" to 5-3/4"	(130 to 146)	25"	(635)	9"	(229)	8-3/16"	(208)	-	-	11	(4.9)
400625	5-7/8" to 6-1/2"	(149 to 165)	25"	(635)	9-3/4"	(248)	8-15/16"	(227)	-	-	12	(5.4)
400725	6-5/8" to 7-1/4"	(168 to 184)	25"	(635)	10-1/2"	(267)	9-11/16"	(246)	-	-	12	(5.4)
400825	7-3/8" to 8-1/8"	(200 to 206)	25"	(635)	11-3/8"	(289)	10-9/16"	(268)	-	-	12	(5.4)
400925	8-1/4" to 9-1/8"	(210 to 232)	25"	(635)	12-3/8"	(314)	11-9/16"	(294)	-	-	15	(6.8)
401025	9-1/4" to 10-1/8"	(235 to 257)	25"	(635)	13-3/8"	(340)	12-9/16"	(319)	-	-	16	(7.3)
401225	10-1/4" to 12-1/4"	(260 to 311)	25"	(635)	15-7/8"	(403)	14-11/16"	(373)	-	-	18	(8.2)
Shielded Models												
500025	Up to 5"	Up to (127)	25"	(635)	8-1/4"	(210)	7-7/16"	(189)	-	-	15	(6.8)
500525	5-1/8" to 5-3/4"	(130 to 146)	25"	(635)	9"	(229)	8-3/16"	(208)	-	-	16	(7.3)
500625	5-7/8" to 6-1/2"	(149 to 165)	25"	(635)	9-3/4"	(248)	8-15/16"	(227)	-	-	17	(7.7)
500725	6-5/8" to 7-1/4"	(168 to 184)	25"	(635)	10-1/2"	(267)	9-11/16"	(246)	-	-	18	(8.2)
500825	7-3/8" to 8-1/8"	(200 to 206)	25"	(635)	11-3/8"	(289)	10-9/16"	(268)	-	-	20	(9.1)
500925	8-1/4" to 9-1/8"	(210 to 232)	25"	(635)	12-3/8"	(314)	11-9/16"	(294)	-	-	23	(10.4)
501025	9-1/4" to 10-1/8"	(235 to 257)	25"	(635)	13-3/8"	(340)	12-9/16"	(319)	-	-	24	(10.9)
501225	10-1/4" to 12-1/4"	(260 to 311)	25"	(635)	15-7/8"	(403)	14-11/16"	(373)	-	-	29	(13.2)
Heated Models												
600025	Up to 5"	Up to (127)	25"	(635)	8-1/4"	(210)	7-7/16"	(189)	300	2.5	18	(8.2)
600525	5-1/8" to 5-3/4"	(130 to 146)	25"	(635)	9"	(229)	8-3/16"	(208)	300	2.5	19	(8.6)
600625	5-7/8" to 6-1/2"	(149 to 165)	25"	(635)	9-3/4"	(248)	8-15/16"	(227)	300	2.5	20	(9.1)
600725	6-5/8" to 7-1/4"	(168 to 184)	25"	(635)	10-1/2"	(267)	9-11/16"	(246)	300	2.5	21	(9.5)
600825	7-3/8" to 8-1/8"	(200 to 206)	25"	(635)	11-3/8"	(289)	10-9/16"	(268)	300	2.5	23	(10.4)
600925	8-1/4" to 9-1/8"	(210 to 232)	25"	(635)	12-3/8"	(314)	11-9/16"	(294)	450	3.8	26	(11.8)
601025	9-1/4" to 10-1/8"	(235 to 257)	25"	(635)	13-3/8"	(340)	12-9/16"	(319)	450	3.8	28	(12.7)
601225	10-1/4" to 12-1/4"	(260 to 311)	25"	(635)	15-7/8"	(403)	14-11/16"	(373)	450	3.8	32	(14.5)

Measurements in () denote metric millimeters, unless otherwise specified.



Lakeside Manufacturing, Inc.

4900 West Electric Avenue • West Milwaukee, WI 53219 U.S.A.

800-558-8565 • 414-902-6400 • Fax 414-902-6446 • www.eLakeside.com