

Sirman Panini Grills

Elio - Cort - PD



- Cook virtually anything.
- Increase sales and profits and keep costs and maintenance low.
- Non-scratch, durable cast iron cooking surface.
- Need very little counter space.
- Easy to use and clean.
- One-year parts and labor warranty with full parts availability.

Distributed by:



PD series Specifications

Construction:	Stainless steel body with seasoned cast iron work surfaces.
Work Surfaces:	One bottom surface, 19" (500 mm) wide, 10" (255 mm) deep. Two top surfaces, 9 1/4" (235 mm) wide, 9 1/4" (235 mm) deep. Top surfaces are independent and adjustable.
Work surface styles:	Four models available: PDR3000 : Top & bottom ribbed PDF3000 : Top & bottom flat PDL3000 : Top ribbed & bottom flat PDM3000 : Left bottom side flat & remaining sides ribbed
Cooking temperature:	Up to 570° F (300° C).
Electrical:	220 V AC, 60Hz, 15,7 A, 3450W.
Plug & Cord:	Attached plug, flexible, 3 wires SJT AWG12, 5" long cord.
Controls:	Two independent thermostats with off position.
Heating elements:	Four: shock-proof, coated.
Timer:	Up to 15 min.
Net Weight:	68 lbs (31 kg).
Shipping weight:	70 lbs (32 kg).
Shipping dimensions :	22 1/8" x 16 7/8" x 10 5/8" (560mm x 430mm x 270mm).



10" x 20" cooking surface
The full-size panini grill,
ideal for supermarkets
and deli shops.

Other features

- The self-balancing top cooking surfaces allow for easy opening and closing, and stay in place
- The hinge mechanism can be simply adjusted with an Allan key (not supplied) without removing the spring cover.
- The 12 oz. capacity grease receptacle is front-mounted and easily removable thanks to two handles.
- The spring cover is removable for accessibility.
- The scraping brush is standard.

CORT series Specifications

Construction:	Stainless steel body with seasoned cast iron work surfaces.
Work Surfaces:	Two, 14 1/2" (355mm) wide, 10" (255 mm) deep. Top surface is adjustable.
Work surface styles:	Three models available: Cort-R : Top & Bottom ribbed Cort-L : Ribbed top & flat bottom Cort-F : Top & bottom flat
Cooking temperature:	Up to 570° F (300° C).
Electrical:	120 V AC, 60Hz, 20 A, 1800W 220V, 60 Hz, 10 A, 1800W
Plug & Cord:	Attached plug, flexible, 3 wires SJT AWG14, 5" long cord.
Controls:	One thermostats with off position.
Heating elements:	Two: shock-proof, coated.
Timer:	Up to 15 min.
Net Weight:	46 lbs (21 kg).
Shipping weight:	53 lbs (24 kg).
Shipping dimensions :	16 7/8" x 16 1/2" x 10 5/8" (430mm x 420mm x 270mm).



10" x 15" cooking surface
Medium-size for
versatility and flexibility.

Other features

- The self-balancing top cooking surfaces allow for easy opening and closing, and stay in place
- The hinge mechanism can be simply adjusted with an Allan key (not supplied) without removing the spring cover.
- The 9oz. capacity grease receptacle is front-mounted and easily removable thanks to two handles.
- The spring cover is removable for accessibility.
- The scraping brush is standard.

Sirman Panini Grills

Elio - Cort - PD

Elio serie

Specifications

Construction:	Stainless steel body with seasoned cast iron work surfaces.
Work Surfaces:	Two, 9 ⁷ / ₈ " (250mm) wide, 10" (255 mm) deep. Top surface is adjustable.
Work surface styles:	Top & bottom ribbed.
Cooking temperature:	Up to 570° F (300° C).
Electrical:	120 V AC, 60Hz, 15 A, 1800W (220V, 50 Hz available on request).
Plug & Cord:	Attached plug, flexible, 3 wires SJT AWG14, 5" long cord.
Controls:	One thermostat with off position.
Heating elements:	Two: shock-proof, coated.
Timer:	Up to 15 min.
Net Weight:	33 lbs (15 kg).
Shipping weight:	37 lbs (17 kg).
Shipping dimensions :	17 ³ / ₄ " x 12 ¹ / ₄ " x 10 ⁵ / ₈ " (450mm x 310mm x 270mm).



10" x 10" cooking surface
Compact size & low weight;
ideal for kiosks & concession stands.

Other features

- The self-balancing top cooking surfaces allow for easy opening and closing, and stay in place
- The hinge mechanism can be simply adjusted with an Allan key (not supplied) without removing the spring cover.
- The 6oz. capacity grease receptacle is front-mounted and easily removable thanks to two handles.
- The spring cover is removable for accessibility.
- The scraping brush is standard.

Dimensions

ELIO

A = 10 1/4" (260 mm)
B = 17 1/8" (435 mm)
C (closed) = 7" (178 mm)
C (open) = 19 3/4" (500 mm)

CORT

A = 15" (380 mm)
B = 17 1/8" (435 mm)
C (closed) = 7" (178 mm)
C (open) = 19 3/4" (500 mm)

PD

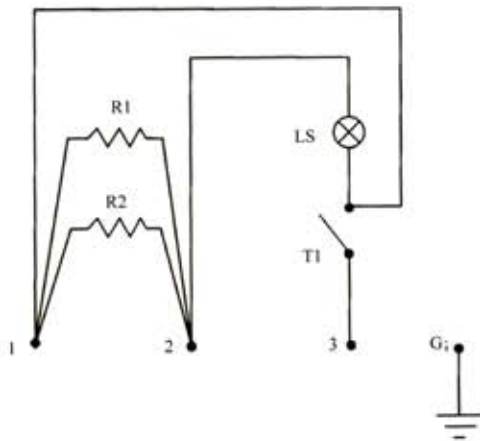
A = 20 1/4" (515 mm)
B = 17 1/8" (435 mm)
C (closed) = 7" (178 mm)
C (open) = 19 3/4" (500 mm)



Electrical diagrams

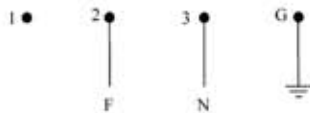
Models: Cort & Elio

R1-R2 = Resistors
 LS = Pilot Lamp
 T1 = Thermostats



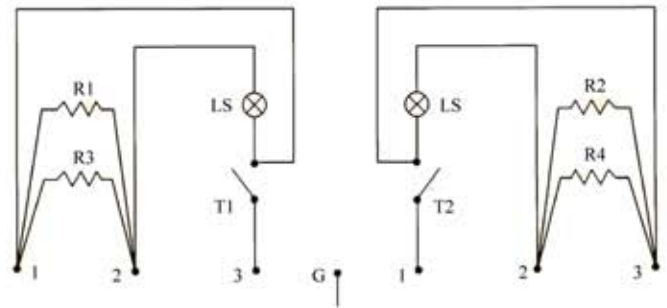
Terminal Board

CONNECTION 115 V MN / 220 + 240 V MN



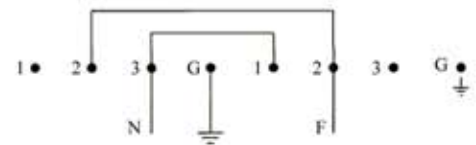
Models: PD

R1-R2-R3-R4 = Resistors
 LS = Pilot Lamp
 T1-T2 = Thermostats
 M1-3 = Terminals



Terminal Board

CONNECTION 220 + 240 V



By **SIRMAN** For **eurodib**

Eurodib inc.

USA

PO Box 1798, 1320 Route 9, Champlain, NY, 12919

Canada

120 de la Barre, Boucherville, Qc, J4B 2X7

Toll free Ph) 888-956-6866 Fax)877-956-6867

www.eurodib.com

Central Restaurant Products