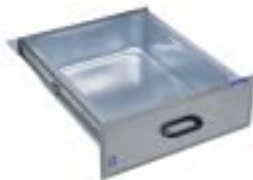


# Duke Specifications

F.O.B. Sedalia, Missouri 65301



**"Your Solutions Partner"**



176 - Deluxe Drawer



185 - Standard Drawer



201 - Spice Bins  
1056 - Overhead Shelf



1156-18 - Wall Shelf



5027 - Ingredient Bin



731 - Tier of Drawers

**AGENCY LISTING:**



**DUKE MANUFACTURING CO.**  
P. O. Box 5426  
St. Louis, MO 63147-0230

800.735.3853 Toll Free  
314.231.1130 In Missouri  
314.231.5074 Fax  
www.dukemfg.com

**PROJECT INFORMATION:**

PROJECT: \_\_\_\_\_

ITEM: \_\_\_\_\_

QUANTITY: \_\_\_\_\_

**MODEL:**

**Aerohot Worktables  
Accessories**

- 176/177 Deluxe drawer
- 185/186 Standard drawer
- 201 Spice bin
- 731/732 Tiers of drawers
- 5027 Portable ingredient bin
- 1056 Single deck overhead shelves
- 1156 Wall shelves

**DRAWERS - 176, 177, 185, 186:**

- **Deluxe:** Removable 15" x 20" x 5" deep removable liner - galv. or S/S
- **Deluxe:** Ball-bearing wheels. Heavy gauge stainless front w/handle
- **Standard:** Die-drawn, fully-coved heavy gauge galvanized or stainless
- **Standard:** 15" x 20" x 5" deep; roller slides; heavy gauge S/S front

**SPICE BIN - 201:**

- Stainless steel, die-drawn, fully coved
- Mounted on ball-bearing wheels, easily removable
- Equipped with name holders
- Requires 7-1/2" space along underside of shelf

**TIERS OF DRAWERS - 731, 732:**

- 15" x 20" x 5" deep die-drawn, coved liner of heavy gauge galv. or S/S
- Set of three drawers for each tier, set in S/S frame mounted on ball-bearing wheels
- Each drawer removable
- Tier without top, suspended from table top
- Enclosure or housing of heavy gauge 300 Series stainless steel
- Dimensions of housing: 23" x 20" x 22-1/2" deep

**WALL SHELF - 1156:**

- 18, 16 or 14 gauge stainless steel (specify)
- Mounted on 14 gauge stainless steel brackets
- 10" wide, back and ends flanged up 1" with front flanged down 1"
- Special widths available

**OVERHEAD SHELF - 1056:**

- 18, 16 or 14 gauge stainless steel (specify)
- Special heights available (specify)
- Special widths available - standard width of 10" (specify)
- Mounted on 1" diameter stainless steel tubular supports
- Standard height of 18" (double deck: top shelf 8" above lower shelf)

**INGREDIENT BIN - 5027:**

- Rubbermaid® brand
- 22" x 22" x 23" high
- 28 gallon capacity
- White seamless Trimeld® - rounded corners
- (4) extra -wide 3" diameter casters - 2 fixed, 2 swivel
- Clear Carb-X® lid - slides and flips up



**AEROHOT WORKTABLES**

**ACCESSORIES**

- 176/177** Deluxe drawer
- 185/186** Standard drawer
- 201** Spice bin
- 731/732** Tiers of drawers
- 5027** Portable ingredient bin
- 1056** Single deck overhead shelves
- 1156** Wall shelves

**DIMENSIONS:**

**Spice Bin (1/6 size pan 4" deep) 7-1/2" space needed for each bin.**

**No. 201** Spice Bin - Weight approximately 2 lbs (.9 kg) per bin.

**Standard Drawer - On Roller Slides** Freight Class - 55

Model	Description
<b>185</b>	Stainless Steel Drawer with Stainless Steel Face Plate
<b>186</b>	Galvanized Drawer with Stainless Steel Face Plate

Weight - Stainless Steel Drawer - 12 lbs. (5.5 kg) Galvanized Drawer - 12 lbs. (5.5 kg).  
 3 drawers can be added to tables 72" or longer. When drawers are ordered separately specify width of table (24", 30", 36").

**Deluxe Drawer - On Ball-Bearing Roller Slides** Freight Class - 55

Model	Description
<b>176</b>	Stainless Steel Front Galvanized Liner
<b>177</b>	Stainless Steel Front Stainless Steel Liner

Weight: Approximately 21 lbs. (9.6 kg)  
 When drawers are ordered separately specify width of table (24", 30", 36"). For lock and keys add "LK" to drawer model number.

**Tiers of Drawers - Without Top - Advise position under top. Available on 30" wide tables only.** Freight Class - 55

Model	Description
<b>731</b>	S/S Housing and S/S Drawers
<b>732</b>	S/S Housing and Galv. Drawers

When ordering specify Center, Left or Right position. Weight approximately 100 lbs. (45.5 kg).

**Portable Ingredient Bin** Freight Class - 100

Model	Description	Length		Width		Height		Weight	
		in.	cm	in.	cm	in.	cm	lbs.	kg
<b>5027</b>	Trimeld Body, 3" Casters (3.8 cu. ft./28 gal.)	22	55.9	22	55.9	23	58.4	27	12.3

Replacement cover with hinge **5027-LID**.

**Single Deck Overhead Shelves** Freight Class - 70

Model	Description	Width		Length (inches to cm)									
		in.	cm	36"	48"	60"	72"	84"	96"	108"	120"	132"	144"
<b>1056</b>	18 gauge	10	25.4	91.4	121.9	152.4	182.9	213.4	243.8	274.3	304.8	335.3	365.8
<b>1056</b>	16 gauge	10	25.4	91.4	121.9	152.4	182.9	213.4	243.8	274.3	304.8	335.3	365.8
<b>1056</b>	14 gauge	10	25.4	91.4	121.9	152.4	182.9	213.4	243.8	274.3	304.8	335.3	365.8

For wider shelves, odd length shelves or double deck shelves see Price Book.  
**NOTE:** Overshelves will be placed across back of table unless otherwise specified.  
**Not recommended for use on Wet Bath Units.** Weight approximately 5 lbs. (2.3 kg per square foot).

**Wall Shelves** Freight Class - 70

Model	Description	Width		Length (inches to cm)									
		in.	cm	36"	48"	60"	72"	84"	96"	108"	120"	132"	144"
<b>1156</b>	18 gauge	10	25.4	91.4	121.9	152.4	182.9	213.4	243.8	274.3	304.8	335.3	365.8
<b>1156</b>	16 gauge	10	25.4	91.4	121.9	152.4	182.9	213.4	243.8	274.3	304.8	335.3	365.8
<b>1156</b>	14 gauge	10	25.4	91.4	121.9	152.4	182.9	213.4	243.8	274.3	304.8	335.3	365.8

For wider or odd length shelves see Price Book. Weight approximately 5 lbs. (2.3 kg) per square foot.

A.I.A. File No. 35-C-13

Catalog No. AWT-ACCESS

AEROHOT WORKTABLES - ACCESSORIES



**DUKE MANUFACTURING CO.**  
 P. O. Box 5426  
 St. Louis, MO 63147-0230

800.735.3853 Toll Free  
 314.231.1130 In Missouri  
 314.231.5074 Fax  
 www.dukemfg.com

Specifications subject to change.  
 Central Restaurant Products

10/99

Printed in U.S.A.  
 ©1999, Duke Manufacturing Co.