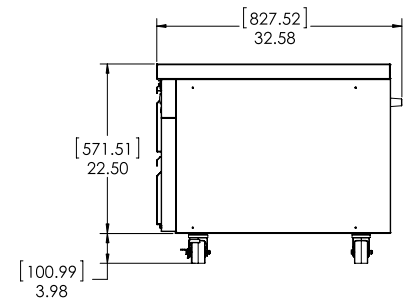
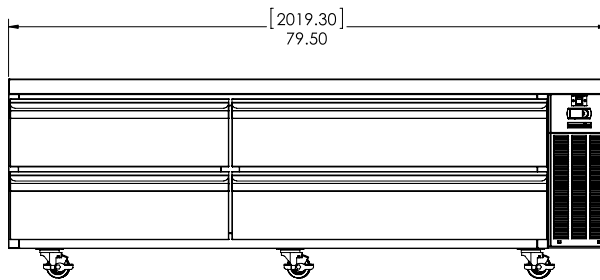
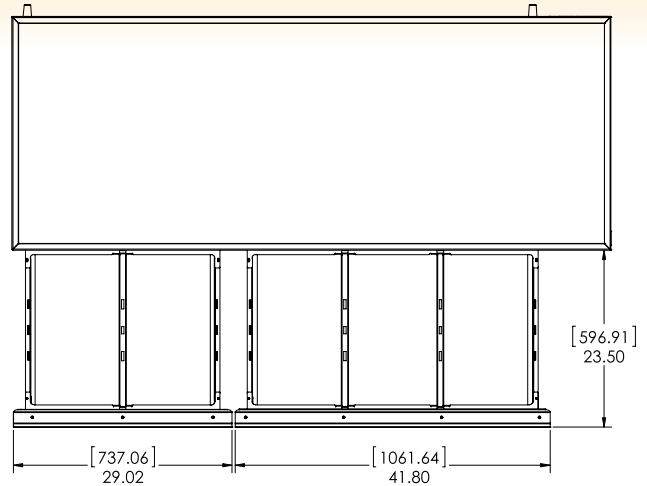
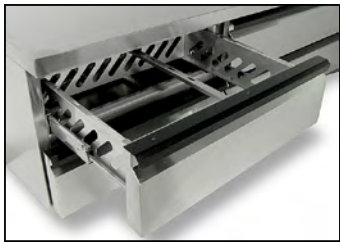




Refrigerated Chef Base

MODEL SKRCB79H/C10



MODEL	LENGTH	DEPTH	HEIGHT	COMPRESSOR	AMPS	WEIGHT
SKRCB79H/C10	79.5"	32.58"	26.48"	1/4 HP	3.1	580 lbs.
EXTERIOR	Stainless steel. Galvanized back.					
INTERIOR	Aluminum. Coved corners and finished edges for ease of cleaning.					
INSULATION	Environmentally friendly foamed-in-place polyurethane for maximum strength and durability.					
DRAWERS	Full extension drawers with drawer slides welded to 12-gauge stainless steel framework. This premier slide and framework construction promotes lateral stability while offering high dynamic load capacities and a stay-shut feature. All drawers accom modate full size 12" x 20" x 6" deep hotel pans and 6" deep fractional pans. Drawers lift out for cleaning.					
REFRIGERATION	CFC-free, 134a refrigerant, hermetically sealed, high efficiency, self contained refrigeration system.					
DRAWER GASKETS	Santo Prene material lasts four times industry standard.					
ELECTRICAL	Standard 115 volt, 60 Hz, single phase. 8 foot, 3-wire power cord with NEMA 5-15 plug.					
LISTINGS	ETL Safety (U.S. and Canada), ETL Sanitation.					
WARRANTY	One year parts and labor. Five year warranty on heavy duty drawer assemblies and compressor.					



1600 Xenium Lane North
 Minneapolis, MN 55441-3787
 Phone (763) 923-2441
 Fax (763) 553-1209
 www.silverking.com



Specifications subject to change without notice.

10/2013
 © Silver King 2013
 Printed in U.S.A.