

LIBMAN COMMERCIAL

Family Made
in The USA
Since 1896

Multi-Purpose Dust Pans

Product Usage

Non-breakable polypropylene, solid injection molded pans. Good for all quick clean-up needs. Whisk set is perfect for all maintenance kits.

#906



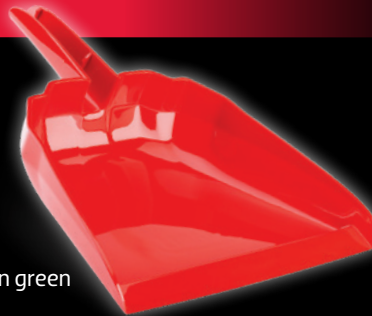
#907



#928



#911



· Available in green as #238

#906 Dust Pan With Whisk Broom

- Available in white with green fibers as #1031
- Dust pan includes #907 whisk broom
- Ergonomic dust pan handle, hanger holes on pan and whisk for easy storage
- Whisk snaps into dust pan
- 42 tufts of flexible, recycled PET fibers with flagging to pick up fine particles
- Ideal design for any maintenance kit

Length of Handle	4"
Length of Pan Base	7.5"

Hanger Hole	1.75" x .4"
Dust Pan Width	10"

#907 Whisk Broom

- Whisk available in white with green fibers as #1030

Width of Block	6"
Sweeping Width	7"

Length of Block	7.75"
Fiber Length	2.75"

#928 13" Dust Pan - Black

- Hanger hole for easy storage
- Snaps onto Commercial Angle Brooms #994, #997 and all push broom handles
- Rubber lip for better floor seal

Width of Pan	13"
Handle Grip Length	5.5"

Hanger Hole	1.15" x .5"
Well Depth	2.25"

#911 13" Dust Pan - Red

- Hanger hole for easy storage
- Snaps onto 3/4" Libman handles
- Available in green as #238

Width of Pan	13"
Handle Grip Length	5.5"

Hanger Hole	1.75" x .5"
Well Depth	3.5"

Commercial End Use

MRO, Plant & Warehouse; Food Service; Janitorial & BSC; Hospitality; Office Products; Health Care & Assisted Care; Construction, Landscaping, & Farm; Housekeeping & Maid Service; Government & Military; Education

Item #	Description	Case Pack	Weight	Case Dimensions
906	Dust Pan With Whisk Broom - Red	6	3.98	11.50 x 10.50 x 12.75
1031	Dust Pan With Whisk Broom - White	6	3.98	11.50 x 10.50 x 12.75
907	Whisk Broom - Red	6	2.53	11.00 x 6.50 x 7.60
1030	Whisk Broom - White	6	2.56	10.90 x 6.50 x 7.50
928	13" Dust Pan - Black	12	6.08	13.60 x 13.40 x 15.30
911	13" Dust Pan - Red	6	4.11	16.10 x 13.80 x 8.00
238	13" Dust Pan - Green	6	4.11	16.10 x 13.80 x 8.00