

24" DEEP SLIDING GLASS DOOR BACK BAR COOLERS



EBB – Series • EBB48G-SD • EBB59G-SD • EBB69G-SD • EBB90G-SD



▲ EBB48G-SD



▲ EBB59G-SD



▲ EBB69G-SD



▲ EBB90G-SD

Cabinet Construction

Heavy duty stainless steel countertop, with textured and laminated black vinyl exterior. Galvanized steel interior wall, and high quality stainless steel floor. 1 3/4" thick high density foamed-in-place polyurethane insulation. Built-in caster thread receptacles for all units.

Refrigeration System

- Side mounted condensing unit
- Oversized condenser and evaporator coils quickly achieve and maintain desired temperature
- Forced-air cooling with oversized evaporator fan motors provide balanced airflow throughout cabinet to ensure faster temperature drop
- Removable side panel and slide-out condensing unit for convenient repair and maintenance
- Environmentally friendly CFC free R-134A refrigerant
- Air defrost controlled by electrical timer
- Copper tube and aluminum fin evaporator with anti-corrosive coating
- Energy efficient condensate drain pan assembly heated by high side copper tube
- Pre-wired and ready to plug, 115V/60Hz/1Ph, NEMA 5-15P

Lighting

- Shielded vertical LED interior lighting with on/off switch for energy efficiency, minimal heat generation and enhanced illumination

Doors

- Black PVC door frames
- Low emissivity double pane glass system reflects UV rays and improves insulation for maximized energy efficiency
- Automatic self-close by weight
- Removable doors and stainless steel door tracks for easy cleaning

Shelving

- Two epoxy coated wire shelves per section
- Stainless steel pilasters and shelf clips

Temperature Control

- Factory preset temperature, 35°F
- Temperature setting range from 32°F to 42°F
- Easy to set analog thermostat

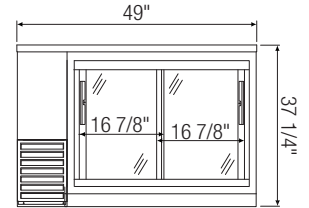
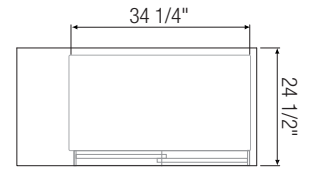
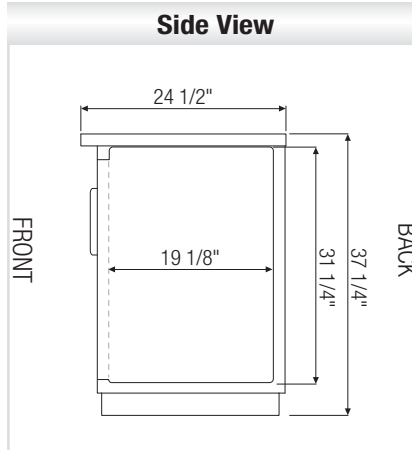
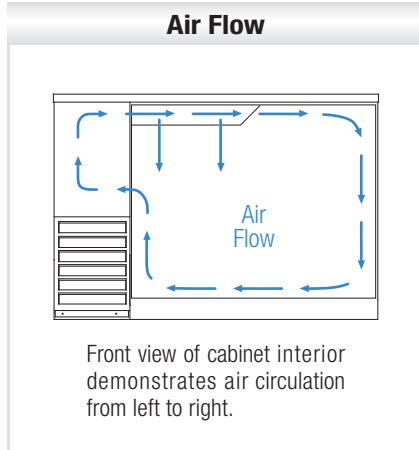
Option

- 2 1/2" and 4" diameter casters (3 1/2" and 5" overall height optional for all models)



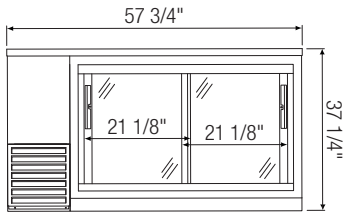
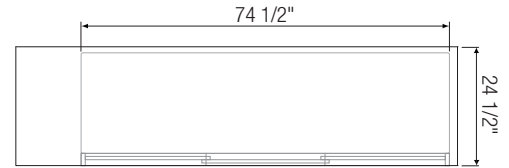
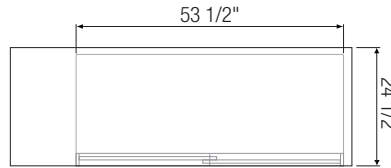
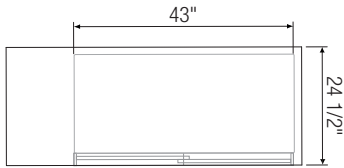
5 YEAR Compressor
3 YEAR Parts & Labor

Dimensions

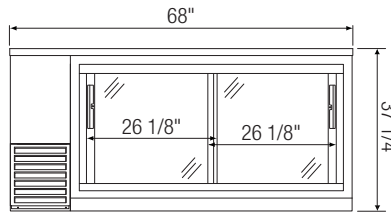


Equipped with 9 ft long NEMA 5-15P plug.

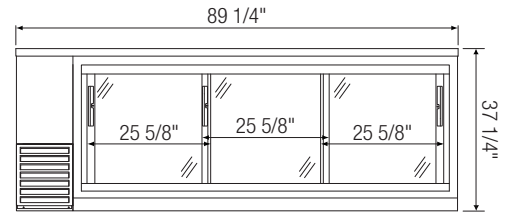
▲ **EBB48G-SD**



▲ **EBB59G-SD**



▲ **EBB69G-SD**



▲ **EBB90G-SD**

Model	Ref/ Frz/ Dual	# of Doors	Capacity (Cu.Ft.) [†]	HP	BTU/HR [†]	Refrigerant	# of Shelves	Capacity		Power (V-Hz-Ph)	Amps	Crated Weight (LBS)	Exterior Dimensions (Inches)			Interior Dimensions (Inches)		
								12 oz. Cans	12 oz. Bottles				L	D	H	L	D	H
EBB48G-SD	Ref	2	13.95	1/4+	2,075	R-134A	4	420	294	115-60-1	4.20	279	49	24 1/2	37 1/4	34 1/4	19 1/8	31 1/4
EBB59G-SD	Ref	2	16.86	1/4+	2,075	R-134A	4	560	357	115-60-1	4.20	300	57 3/4	24 1/2	37 1/4	43	19 1/8	31 1/4
EBB69G-SD	Ref	2	20.41	1/4+	2,075	R-134A	4	700	441	115-60-1	4.20	345	68	24 1/2	37 1/4	53 1/2	19 1/8	31 1/4
EBB90G-SD	Ref	3	27.76	1/3	2,555	R-134A	6	980	609	115-60-1	4.50	413	89 1/4	24 1/2	37 1/4	74 1/2	19 1/8	31 1/4

† : Based on evaporating temperature of 23°F (-5°C) & condensing temperature of 131°F (55°C).

Ref = Refrigerator

Specifications subject to change without notice.

Product dimensions are for general purposes and not absolute value. Product capacity(†) is calculated based on standard industry figures. Slight variations may exist. If dimensions and capacity are critical, please contact Everest Refrigeration.



Please visit our website for updated Energy Efficiency information.