

GLASS DOOR BACK BAR COOLERS

EBB – Series • EBB23G • EBB48G • EBB59G • EBB69G • EBB90G



▲ EBB23G



▲ EBB48G



▲ EBB59G



▲ EBB69G



▲ EBB90G

Cabinet Construction

Heavy duty stainless steel countertop, with textured and laminated black vinyl exterior. Galvanized steel interior wall, and high quality stainless steel floor. 1 3/4" thick high density foamed-in-place polyurethane insulation. Pre-installed four 4" diameter casters for single door unit. Built-in caster thread receptacles for all units.

Refrigeration System

- Back mounted condensing unit for single door, and side mounted condensing unit for two and three door models
- Oversized condenser and evaporator coils quickly achieve and maintain desired temperature
- Forced-air cooling with oversized evaporator fan motors provide balanced airflow throughout cabinet to ensure faster temperature drop
- Removable side panel and slide-out condensing unit for convenient repair and maintenance
- Environmentally friendly CFC free R-134A refrigerant
- Air defrost controlled by electrical timer
- Copper tube and aluminum fin evaporator with anti-corrosive coating
- Energy efficient condensate drain pan assembly heated by high side copper tube
- Pre-wired and ready to plug, 115V/60Hz/1Ph, NEMA 5-15P

Lighting

- Shielded vertical LED interior lighting with on/off switch for energy efficiency, minimal heat generation and enhanced illumination

Doors

- Black PVC door frames
- Low emissivity double pane glass system reflects UV rays and improves insulation for maximized energy efficiency
- One piece snap-in magnetic door gaskets for easy replacement
- Heavy duty die-cast door handles
- Door locks

Shelving

- Two epoxy coated wire shelves per section
- Stainless steel pilasters and shelf clips

Temperature Control

- Factory preset temperature, 35°F
- Temperature setting range from 32°F to 42°F
- Easy to set analog thermostat

Option

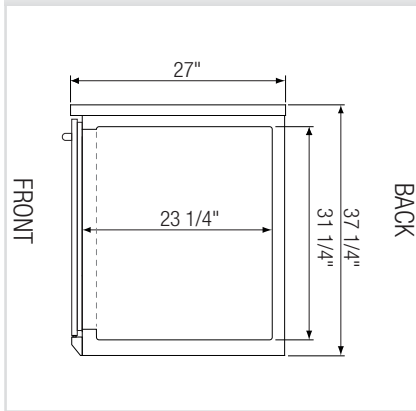
- 2 1/2" and 4" diameter casters (3 1/2" and 5" overall height) optional for all models except EBB23G



5 YEAR Compressor
3 YEAR Parts & Labor

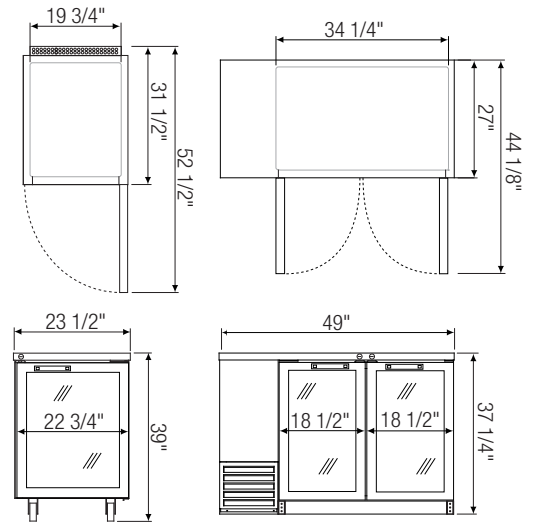
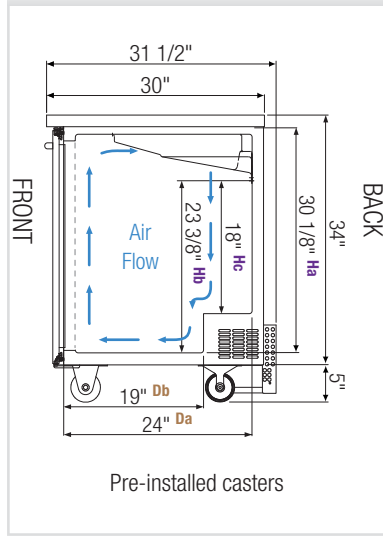
Dimensions

Side View (all models except EBB23G)



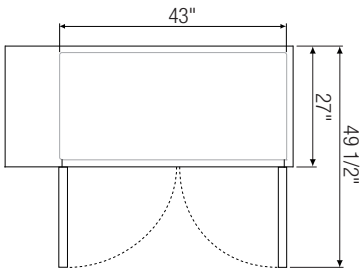
Equipped with 9 ft long NEMA 5-15P plug.

Side View (EBB23G)

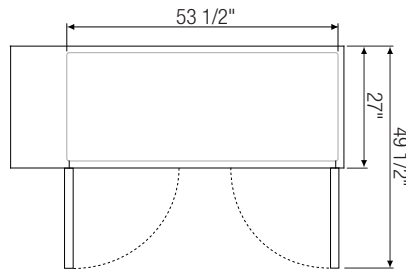


▲ EBB23G

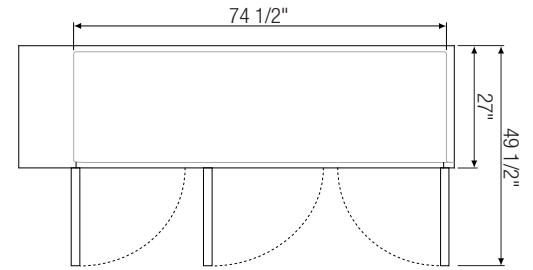
▲ EBB48G



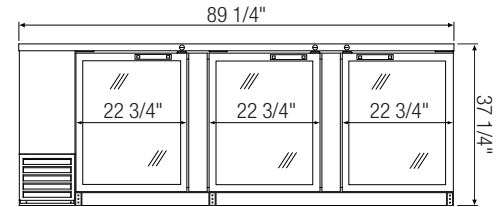
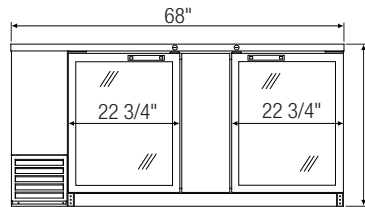
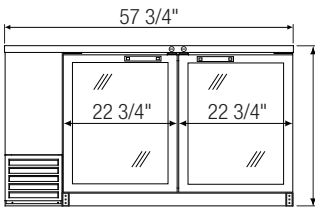
▲ EBB59G



▲ EBB69G



▲ EBB90G



Model	Ref/ Frz/ Dual	# of Doors	# of Shelves	Capacity (Cu.Ft.) [†]	HP	Refrigerant	Capacity		Power (V-Hz-Ph)	Amps	Crated Weight (LBS)	Exterior Dimensions (Inches)			Interior Dimensions (Inches)				
							12 oz. Cans	12 oz. Bottles				L	D*	H	L	D	H		
EBB23G	Ref	1	2	8.19	1/5	R-134A	220	125	115-60-1	3.90	170	23 1/2	31 1/2 [†]	39 ^a	19 3/4	24 ^{Da}	30 1/8 ^{Ha}	23 3/8 ^{Hb}	18 ^{Hc}
EBB48G	Ref	2	4	14.3	1/4+	R-134A	490	258	115-60-1	4.20	289	49	27	37 1/4	34 1/4	23 1/4	31 1/4		
EBB59G	Ref	2	4	20.09	1/4+	R-134A	640	408	115-60-1	4.50	322	57 3/4	27	37 1/4	43	23 1/4	31 1/4		
EBB69G	Ref	2	4	24.01	1/4+	R-134A	800	504	115-60-1	4.50	355	68	27	37 1/4	53 1/2	23 1/4	31 1/4		
EBB90G	Ref	3	6	32.37	1/3	R-134A	1120	696	115-60-1	4.50	484	89 1/4	27	37 1/4	74 1/2	23 1/4	31 1/4		

*: Depth does not include protruding door handles.

†: Depth includes 1 1/2" for back grill.

a: Height includes 5" for casters.

Da, Db: Interior Depth Ha, Hb, Hc: Interior Height

Ref = Refrigerator

Specifications subject to change without notice.

Product dimensions are for general purposes and not absolute value. Product capacity(†) is calculated based on standard industry figures. Slight variations may exist. If dimensions and capacity are critical, please contact Everest Refrigeration.



Please visit our website for updated Energy Efficiency information.