

BOTTOM MOUNT REACH-IN GLASS DOOR REFRIGERATORS

Bottom Mounted Condensing Unit



EB – Series • EBGR1 • EBGNR2 • EBGR2



▲ EBGR1



▲ EBGNR2



▲ EBGR2

Cabinet Construction

Heavy duty stainless steel interior and exterior, with galvanized steel finished top, bottom and back wall of exterior. ABS evaporator drain covers. 2.5" thick high density foamed-in-place polyurethane insulation. Four 4" diameter casters (front casters with brakes) with additional front weight support legs. Door heater installed around inside cabinet frame to prevent moisture build-up.

Refrigeration System

- Bottom mounted condensing unit
- Oversized condenser and evaporator coils quickly achieve and maintain desired temperature
- Forced-air cooling with multiple evaporator fan motors provide balanced airflow throughout cabinet to ensure faster temperature drop
- Environmentally friendly CFC free R-134A refrigerant
- Adjustable, time-initiated defrost cycle of 3 to 12 hours with 350 watt defrost heater, both time and temperature terminated for fail-safe operation
- Automatic evaporator fan motor delay after defrost cycle
- Copper tube and aluminum fin evaporator with anti-corrosive coating
- Energy efficient condensate drain pan with wicking pads for self sufficient condensation removal
- Pressure relief ports for rapid re-entry
- Interior airflow backward to ensure proper air circulation
- Pre-wired and ready to plug, 115V/60Hz/1Ph, NEMA 5-15P

Lighting

- Shielded vertical LED interior lighting with on/off switch for energy saving, less heat generation and enhanced illumination

Doors

- Matte finish aluminum door frames
- Low emissivity double pane glass system reflects UV rays and improves insulation for maximized energy efficiency
- Heavy duty adjustable torsion spring self-closing door system
- One piece snap-in magnetic door gaskets for easy replacement
- Heavy duty die-cast door handles
- Door locks (*available from 2017 models*)
- Field reversible doors

Shelving

- Four epoxy coated wire shelves per section
- Stainless steel pilasters and shelf clips

Temperature Control

- Factory preset temperature, 35°F
- Temperature setting range from 33°F to 54°F
- Easy to read digital temperature display
- Easy to program push-button temperature control
- Microchip digital control and monitoring system with a variety of functions to monitor and maintain optimum temperature



Dimensions

ABS Legs



Two additional front adjustable stainless steel clad ABS legs to provide extra stability when opening and closing door.

√: Vacuum Relief Mechanism

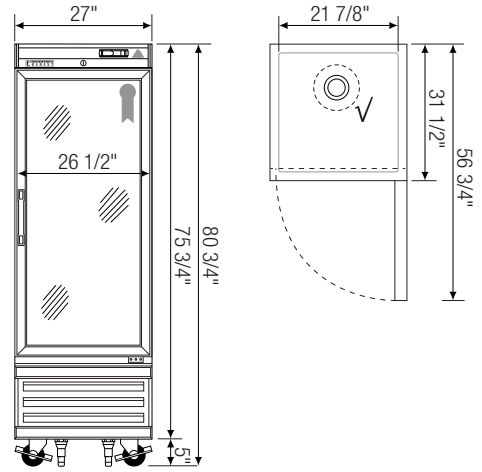
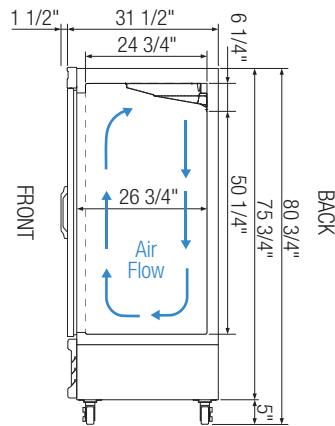


The vacuum relief valve equalizes cabinet pressure for rapid door re-entry.

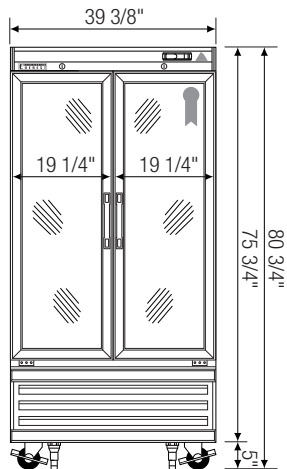


Equipped with 9 ft long NEMA 5-15P plug.

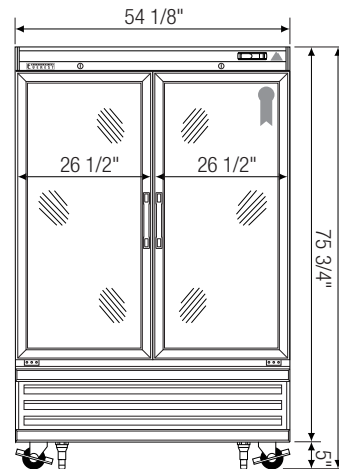
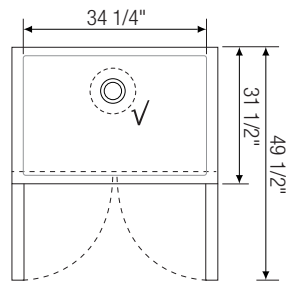
Side View



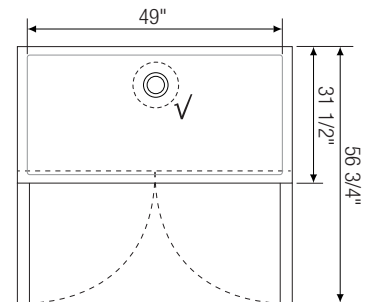
▲ EBGR1



▲ EBGNR2



▲ EBGR2



Model	Ref/ Frz/ Dual	# of Doors	Capacity [▶] (Cu.Ft.)	HP	BTU/HR [†]	Refrigerant	# of Shelves	Power (V-Hz-Ph)	Amps	Crated Weight (LBS)	Exterior Dimensions (Inches)			Interior Dimensions (Inches)		
											L	D ^a	H [*]	L	D	H
EBGR1	Ref	1	20	1/3	2,555	R-134A	4	115-60-1	5.35	330	27	31 1/2	75 3/4	21 7/8	26 3/4	56 1/2
EBGNR2	Ref	2	33	1/3+	3,268	R-134A	8	115-60-1	8.02	421	39 3/8	31 1/2	75 3/4	34 1/4	26 3/4	56 1/2
EBGR2	Ref	2	50	1/2	3,968	R-134A	8	115-60-1	8.02	518	54 1/8	31 1/2	75 3/4	49	26 3/4	56 1/2

*: Height does not include 5" for casters.

†: Based on evaporating temperature of 23°F (-5°C) & condensing temperature of 131°F (55°C).

a: Exterior depth dimension does not include 1-1/2" for door handles.

Ref = Refrigerator

Specifications subject to change without notice.

Product dimensions are for general purposes and not absolute value. Product capacity(▶) is calculated based on standard industry figures. Slight variations may exist. If dimensions and capacity are critical, please contact Everest Refrigeration.



Please visit our website for updated Energy Efficiency information.