

CHROMATOGRAPHY REFRIGERATORS

Swing Doors

EM – Series • EMGR24C • EMSGR33C • EMSGR48C • EMSGR69C



▲ EMGR24C



▲ EMSGR33C



▲ EMSGR48C



▲ EMSGR69C

Cabinet Construction

Heavy duty white coated steel for cabinet interior and exterior. High quality stainless steel interior floor with round edges for convenient cleaning. ABS evaporator drain covers. 2.5" thick high density foamed-in-place polyurethane insulation. Adjustable screw legs for leveling. One additional heavy duty adjustable screw leg located at bottom of front cabinet for weight support for model EMSGR69C.

Refrigeration System

- Bottom mounted condensing unit
- Removable bottom grill and slide-out condensing unit for easy repair and maintenance
- Oversized condenser and evaporator coils quickly achieve and maintain desired temperature
- Forced-air cooling with oversized evaporator fan motors provide balanced airflow throughout cabinet to ensure faster temperature drop
- Environmentally friendly CFC free R-134A refrigerant
- Air defrost controlled by thermostat
- Copper tube and aluminum fin evaporator with anti-corrosive coating
- Energy efficient condensate drain pan with wicking pads for self sufficient condensation removal
- Two electrical cords, pre-wired and ready to plug, 115V/60Hz/1Ph, NEMA 5-15P

Lighting

- Shielded vertical LED interior lighting with on/off switch for energy efficiency, minimal heat generation and enhanced illumination

Doors

- Black PVC door frames
- Low emissivity double pane glass system reflects UV rays and improves insulation for maximized energy efficiency
- Heavy duty adjustable torsion spring self-closing door system
- One piece snap-in magnetic door gaskets for easy replacement
- Heavy duty die-cast door handles

Shelving

- Four epoxy coated wire shelves per section
- Stainless steel pilasters and shelf clips

Temperature Control

- Factory preset temperature, 35°F
- Temperature setting range from 32°F to 42°F
- Easy to set thermostat dial

Option

- 2 1/2" and 4" diameter casters (3 1/2" and 5" overall height)

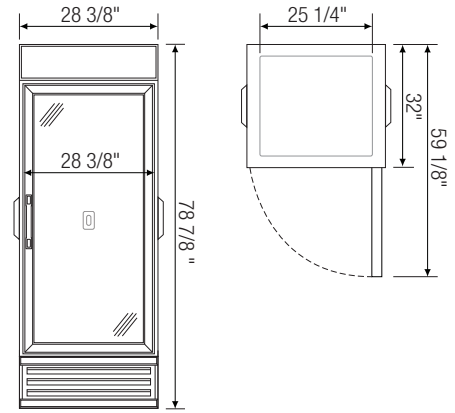
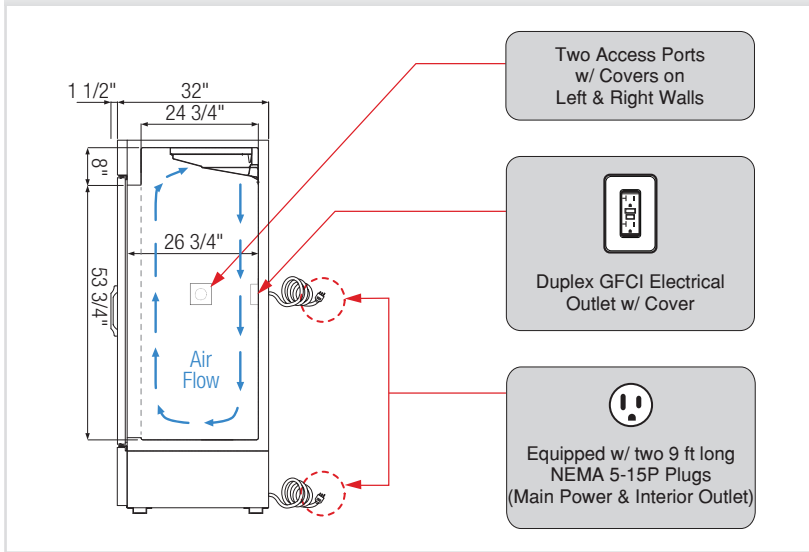
Chromatography Features

- Access ports on sidewalls for running lines, probes and cords
- Water-proof, heavy duty receptacle cover with lockable tabs
- Interior duplex GFCI electrical outlet safely located at the back wall

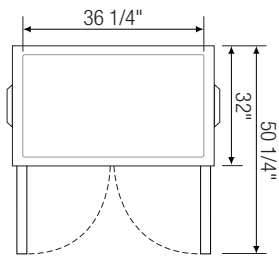


Dimensions

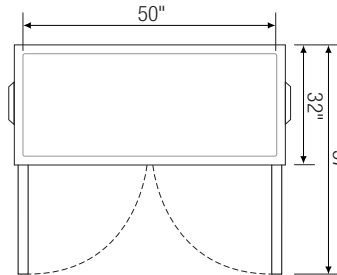
Side View



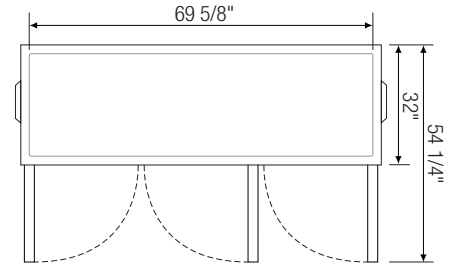
▲ EMGR24C



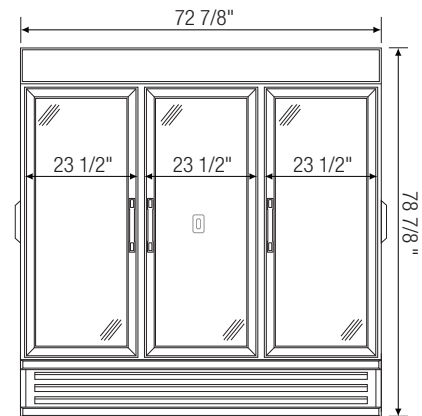
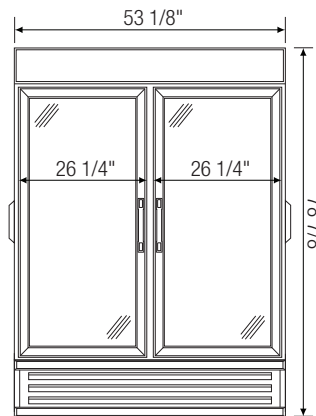
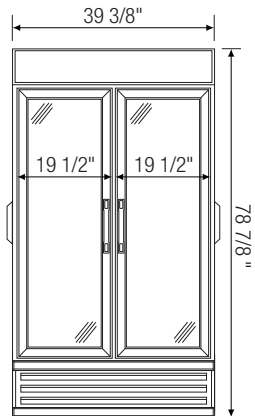
▲ EMSGR33C



▲ EMSGR48C



▲ EMSGR69C



Model	Ref/ Frz/ Dual	# of Doors	Capacity (Cu.Ft.) [†]	HP	BTU/HR [†]	Refrigerant	# of Shelves	Power (V-Hz-Ph)	Amps	Crated Weight (LBS)	Exterior Dimensions (Inches)			Interior Dimensions (Inches)		
											L	D [*]	H	L	D	H
EMGR24C	Ref	1 (swing)	24	1/3	2,555	R-134A	4	115-60-1	5.50	327	28 3/8	32	78 7/8	25 1/4	26 3/4	61 3/4
EMSGR33C	Ref	2 (swing)	33	1/3	2,555	R-134A	8	115-60-1	10.40	414	39 3/8	32	78 7/8	36 1/4	26 3/4	61 3/4
EMSGR48C	Ref	2 (swing)	48	1/2+	3,429	R-134A	8	115-60-1	10.40	533	53 1/8	32	78 7/8	50	26 3/4	61 3/4
EMSGR69C	Ref	3 (swing)	69	3/4+	4,574	R-134A	12	115-60-1	11.00	698	72 7/8	32	78 7/8	69 5/8	26 3/4	61 3/4

* : Exterior depth of swing door units does not include 1 1/2" for door handles.

† : Based on evaporating temperature of 23°F (-5°C) & condensing temperature of 131°F (55°C).

∅ : Exterior length does not include protruding access ports.

Ref = Refrigerator

Specifications subject to change without notice.

Product dimensions are for general purposes and not absolute value. Product capacity(†) is calculated based on standard industry figures. Slight variations may exist. If dimensions and capacity are critical, please contact Everest Refrigeration.



Please visit our website for updated Energy Efficiency information.