



Justrite Safety Group

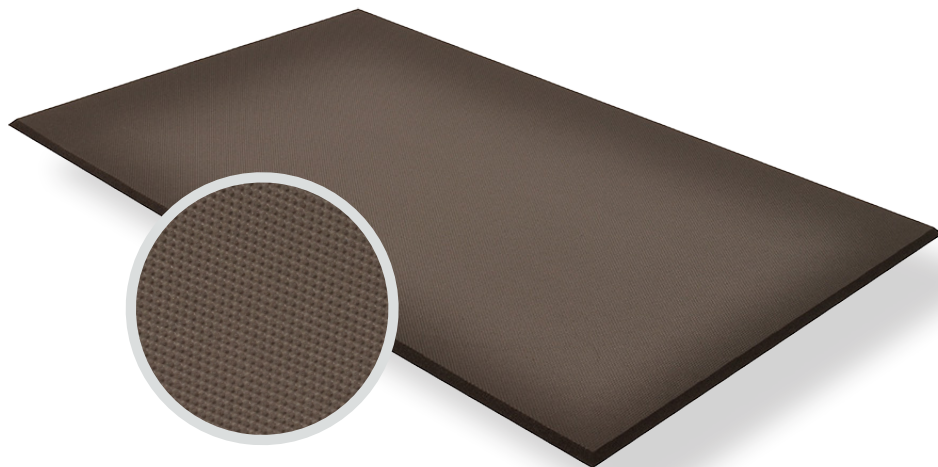
T57 - SUPERFOAM™ PLUS
PRODUCT INFORMATION BROCHURE





For over 70 years, the name Notrax[®] has meant superior quality, service, and innovative products. Now this brand is a cornerstone of Justrite Safety Group, offering the widest selection of products to a variety of markets and applications including entrance mats, anti-fatigue/safety mats, and products designed specifically for use in professional food service environments. Notrax[®] offers a complete selection of floor matting options to meet any application requirement, quality expectation, and budget.

- **Track record of manufacturing high quality mats for over seventy years**
- **All products are manufactured in ISO certified facilities**
- **Notrax[®] offers anti-fatigue matting, entrance matting, safety matting, food service matting and specialty mats designed for a variety of industries**



T57 - SUPERFOAM™ PLUS is a durable rubberized sponge mat designed for extreme ergonomic comfort. Made from a completely closed cell foam blend, Superfoam™ Plus does not absorb liquids and is highly resistant to grease, oils and animal and vegetable fats. At 3/4" thick this anti-fatigue mat is ideal for workers standing for long periods of time.

Material: Nitrile/PVC Foam Blend

Features and Benefits:


- Durable rubberized sponge mat designed for extreme ergonomic comfort
- Highly resistant to grease, oils and animal & vegetable fats
- Closed cell foam blend does not absorb liquids
- Durable and abrasion resistant
- Solid for dry areas
- PVC/Nitrile closed cell foam blend
- Non-allergenic, silicone-free compound
- Beveled edges on all 4 sides

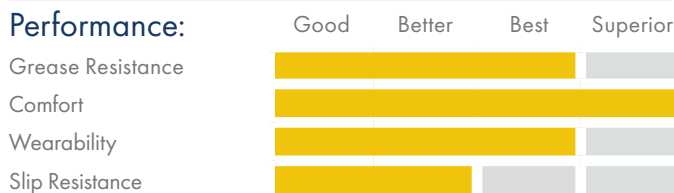


MODEL: T57

⚠ WARNING: This product can expose you to chemicals including di-2-ethylhexyl phthalate and/or diisononyl phthalate which is known to the State of California to cause cancer, birth defects or reproductive harm. For more information, visit www.P65Warnings.ca.gov

SPECIFICATIONS

Stock Sizes	20"x24", 24"x72", 24"x40", 36"x40", 36"x60"
Thickness	3/4"
Colors	 Black



APPLICATIONS

- Dish washing Stations
- Bar Areas
- Cooking Lines
- Service Counters



TESTING DATA

Test	Test Description	Results
ASTM D1056	25% Compression Resistance (psi)	6.0 - 12.0
ASTM D1056	50% Compression Set (%)	25 max.
ASTM D1667	Water Absorption (lb/ft ²)	0.1 max.
ASTM D412	Tensile Strength (psi)	90 min.
ASTM D-2859/CPSC FF-170	Surface Flammability/Carpets and Rugs	Pass
ASTM D412	Elongation (%)	100 min.
Flammability FMVSS302	0 Burn Rate	Pass

*Testing performed by an independent test laboratory.

NOTRAX®

5655 West 73rd Street
Chicago, IL 60638

PHONE: (800) 621-2802

FAX: (800) 322-7105

EMAIL: saleschicago@checkers-safety.com

www.notrax.com



A PRODUCT OF:



Justrite Safety Group is the leading source of safety equipment for flammables and hazardous materials storage and handling, asset protection, environmental protection spill containment, absorbents, specialized chemical storage, cable management, safety showers and eye/face washes, matting, and vehicle safety equipment. Learn more at Justrite.com, Checkers-safety.com, and Notrax.com.