



Justrite Safety Group

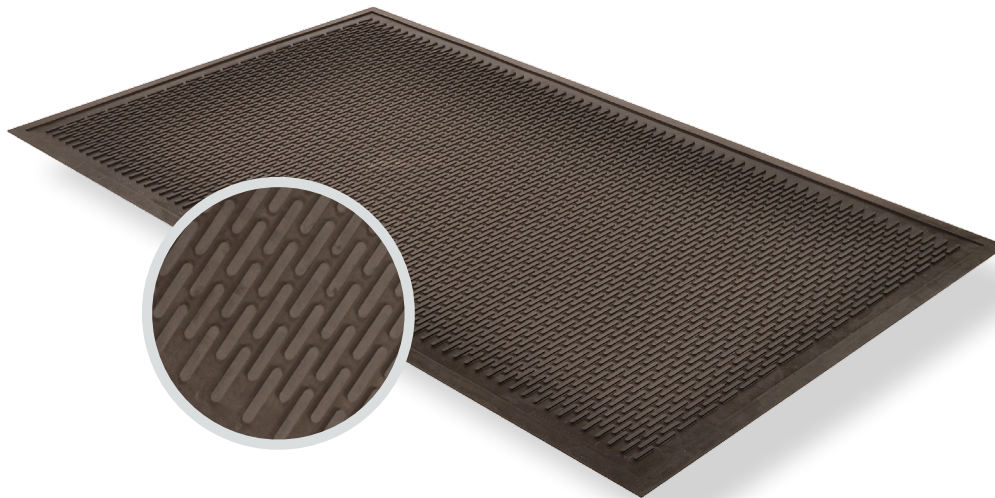
340 - SOIL GUARD™
PRODUCT INFORMATION BROCHURE





For over 70 years, the name Notrax[®] has meant superior quality, service, and innovative products. Now this brand is a cornerstone of Justrite Safety Group, offering the widest selection of products to a variety of markets and applications including entrance mats, anti-fatigue/safety mats, and products designed specifically for use in professional food service environments. Notrax[®] offers a complete selection of floor matting options to meet any application requirement, quality expectation, and budget.

- **Track record of manufacturing high quality mats for over seventy years**
- **All products are manufactured in ISO certified facilities**
- **Notrax[®] offers anti-fatigue matting, entrance matting, safety matting, food service matting and specialty mats designed for a variety of industries**

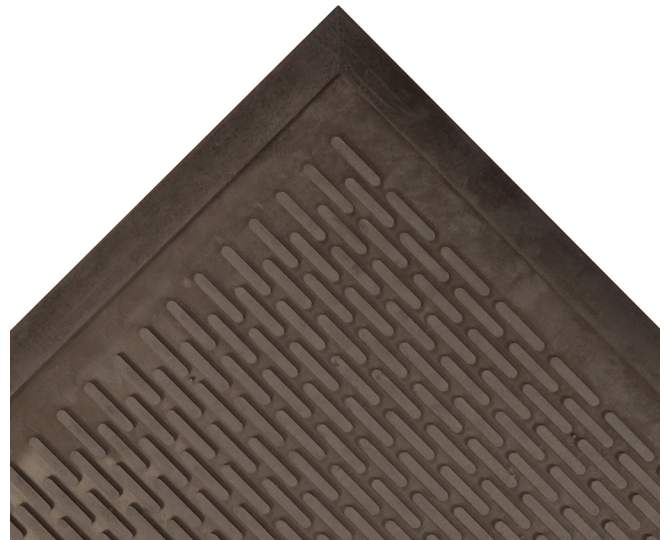


340 - SOIL GUARD™ is a durable outdoor entrance mat intended to guard against soil with its high-low scraping design. Its low profile allows for easy door clearance as well as regular cart traffic, while a specially formulated rubber allows Soil Guard™ to withstand harsh weather environments and heavy foot traffic. Soil Guard™ excels in both indoor and outdoor high traffic entryways and can be hosed off for easy cleaning.

Material: Rubber

Features and Benefits:

- Heavy-duty, durable rubber compound.
- Low profile for door clearance / cart traffic
- High-low design scrapes debris from shoe traffic
- Easy to clean – simply hose off
- Recommended and approved product as a part of the **GreenTRAX™** program for “Green Cleaning” environments




MODEL: 340

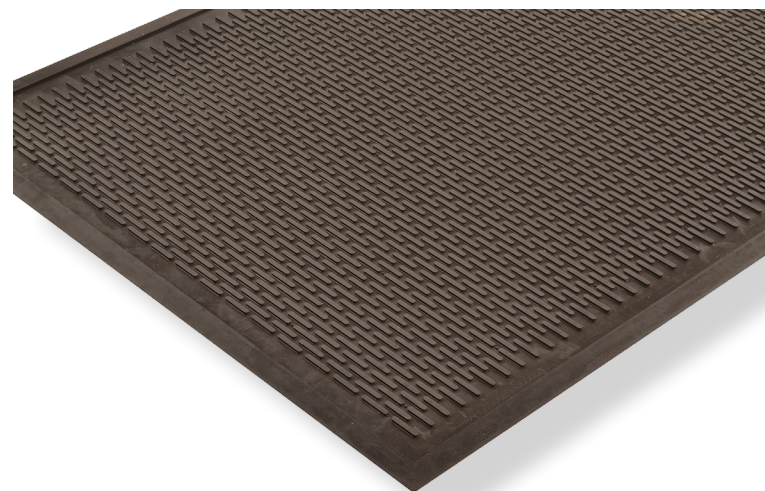
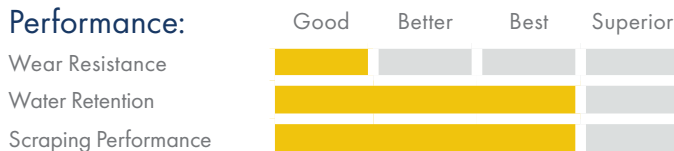
SPECIFICATIONS

APPLICATIONS

- Retail
- Shopping Malls
- Schools
- Hospitals

Stock Sizes	3'x5', 4'x6' (W/Parquet pattern)
Thickness	1/4"
Colors	 Black

Performance:



Heavy Traffic



Cleaning



Cold Resistant



Outdoor Use

TESTING DATA

Test	Test Description	Results
ASTM D3884-01	Abrasion Resistance	2.55 grams (3.3%)
ASTM C1028-96	Static Coefficient of Friction	Wet: 0.78 Dry: 0.70
ASTM D395 ASTM D575 ASTM D1171	Materials Analysis	Compressions Set @ 25%: 0.5% Comp. Deflection @ 25%: 221.0 lbs/in ² Comp. Deflection @ 50% Exceeds 1,000lbs/in ² Ozone: Very Slight Cracking
CPSC FF 1-70 ASTM D-2859	Surface Flammability of Carpets and Rugs Ignition Characteristics - Finished Textile Floor Covering Material	Pass

*Testing performed by an independent test laboratory.

NOTRAX®

5655 West 73rd Street
Chicago, IL 60638

PHONE: (800) 621-2802

FAX: (800) 322-7105

EMAIL: saleschicago@checkers-safety.com

www.notrax.com



A PRODUCT OF:



Justrite Safety Group is the leading source of safety equipment for flammables and hazardous materials storage and handling, asset protection, environmental protection spill containment, absorbents, specialized chemical storage, cable management, safety showers and eye/face washes, matting, and vehicle safety equipment. Learn more at Justrite.com, Checkers-safety.com, and Notrax.com.