



# "JNS" Maple Top Work Tables

w/ 1 1/2" thick Hard Rock Maple Top  
w/ Galvanized Base and Undershef



| 1-1/2" MAPLE TOP w/ UNDERSHELF |     |         |     |         |     |
|--------------------------------|-----|---------|-----|---------|-----|
| 24"WIDE                        | Qty | 30"WIDE | Qty | 36"WIDE | Qty |
| JNS01                          |     | JNS08   |     | JNS15   |     |
| JNS02                          |     | JNS09   |     | JNS16   |     |
| JNS03                          |     | JNS10   |     | JNS17   |     |
| JNS04                          |     | JNS11   |     | JNS18   |     |
| JNS05                          |     | JNS12   |     | JNS19   |     |
| JNS06                          |     | JNS13   |     | JNS20   |     |
| JNSA                           |     | JNS13A  |     | JNS20A  |     |
| JNS07                          |     | JNS14   |     | JNS21   |     |

**FEATURES:**

- \* 1 1/2" Thick Hard Rock Maple Top top style "SCT" flat top
- \* Maple top is finished with penetrating oil with optional natural clear Varnique Finish
- \* Galvanized base and undershef,
- \* Undershef is secured in a fixed position, 12" above floor
- \* Adjustable bullet feet
- \* Shipped knocked-down, easy - to - assemble
- \* Optional drawers, casters, pot racks, etc. available
- \* All models are approved by the National Sanitation Foundation

**MATERIAL:**

- Top: Laminated Hard Rock Maple
- Shelf: 18 gauge Galvanized Steel
- \*\* 6 ft. table only, 16 gauge galvanized steel
- Legs: 16 gauge Galvanized Steel
- Gussets: Galvanized Steel
- Feet: 1" adjustable galvanized bullet feet

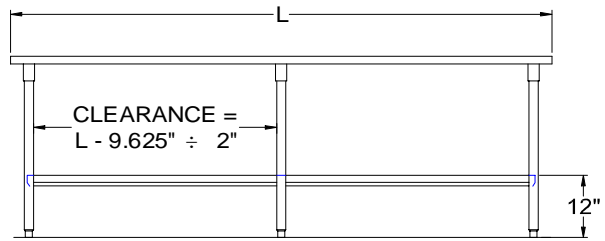
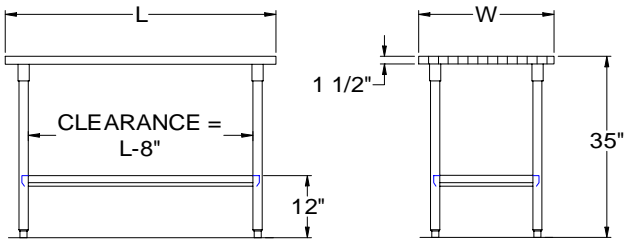
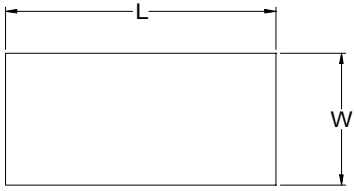
**OPTIONAL ACCESSORIES**

|                  | MODEL # | Qty |
|------------------|---------|-----|
| DRAWER           |         |     |
| DRAWER LOCK      |         |     |
| ADJUSTABLE SHELF |         |     |
| CASTERS          |         |     |
| OVERSHELVES      |         |     |
| POT RACK         |         |     |

**John Boos & Co**

315 South First Street - Effingham, IL 62401  
 Phone: 217-347-7701 - Fax: 217-347-7705  
 Email: sales@johnboos.com - Web-site: www. johnboos.com

# DETAILED SPECIFICATIONS



All units ship unassembled for reduced shipping cost.  
 Units 7 ft. and larger are furnished with six legs.  
 All dimensions are typical.  
 Tolerance +/- .500".

Finished size of undershelf.  
 Shelf length = length minus 4.875"  
 Shelf width = width minus 4.25"

## 1-1/2" MAPLE TOP & UNDERSHELF

| L   | 24" WIDE | WT. | 30" WIDE | WT. | 36" WIDE | WT. |
|-----|----------|-----|----------|-----|----------|-----|
| 36  | JNS01    | 72  | JNS08    | 86  | JNS15    | 100 |
| 48  | JNS02    | 90  | JNS09    | 109 | JNS16    | 127 |
| 60  | JNS03    | 109 | JNS10    | 132 | JNS17    | 155 |
| 72  | JNS04    | 133 | JNS11    | 161 | JNS18    | 190 |
| 84  | JNS05    | 146 | JNS12    | 178 | JNS19    | 214 |
| 96  | JNS06    | 164 | JNS13    | 201 | JNS20    | 239 |
| 108 | JNS06A   | 187 | JNS13A   | 229 | JNS20A   | 271 |
| 120 | JNS07    | 209 | JNS14    | 256 | JNS21    | 303 |

### John Boos & Co

315 South First - Effingham, IL 62401 Phone: 217-347-7701 - Fax: 217-347-7705  
 Email: sales@johnboos.com - Web-site: www.johnboos.com



March 2009

**John Boos** is constantly engaged in a program of improving products and therefore reserves the right to change specification without prior notice