



Single & Double Overshelf Installation

Model(s) – TFP/TUC/TSSU/TPP

Kit Contents*

- Overshelf/Backstop Assembly
- Shelf Support Bars
- Rivnut Tool Kit
- Glossy Hole Plugs
- 5/16" Drill Bit
- 2" 1/4-20 Hex Bolts
- 1/4-20 Locknuts
- 1/4-20 Flat Washers
- 1/2" 6-32 Phillips Bolts
- 6-32 Locknuts

*Required quantities vary by model

Required Tool(s)

- Marking Utensil
- 7/16" Socket Wrench
- 1/2" Wrench
- Drill

Step 1

Align shelf support holes A and B (see fig. 1) with the predrilled holes in the back of the cabinet. With the provided hex bolts, temporarily secure each support to the cabinet.

Step 2

Mark hole C's location on each side of the cabinet. Remove the support bars and then drill holes where marked.

Step 3

Installation varies for close-backed and open-backed units. Refer to figs. B and C for assistance in determining which procedure to follow.

NOTE: Remember to use washers during installation.

Open-Backed Units (Fig. 1)

With the provided hex bolts, secure the support bars to the unit.

NOTE: Installation may require temporarily removing the back cover.

Close-Backed Units (Fig. 2)

1. With the provided rivnut tool kit, install rivnuts in the drilled holes. See kit for instructions.
2. With the provided hex bolts, secure the support bars to the unit.

TFP Models Only

Remove the top screws from the back cover (see fig. 2) before securing the support bars.

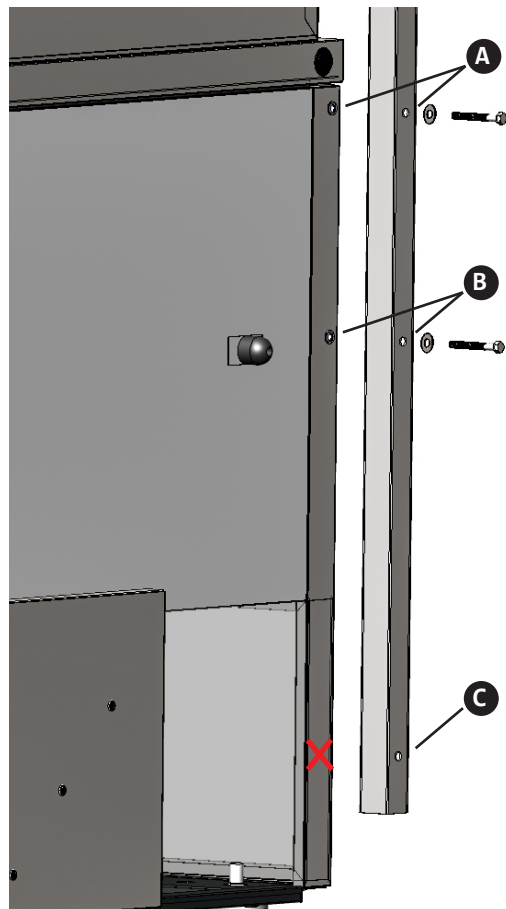


Fig. 1. Mark the location of hole C on the unit. Open-backed unit shown.

CONTACTS

NORTH AMERICA - CANADA AND CARIBBEAN

Warranty Phone: +1 855 878 9277
 Warranty Fax: +1 636 980 8510
 Technical Phone: +1 855 372 1368
 Warranty Email: warrantyinquiries@truemfg.com
 Technical Email: service@truemfg.com
 7:00-7:00 CST Monday-Thursday,
 7:00-6:00 Friday, 8:00-12:00 Saturday

MEXICO

Phone: +52 555 804 6343/44
 Toll Free in Mexico: 01 800 202 0687
 service-mexicocity@truemfg.com
 9:00am – 5:30pm M-F

LATIN AMERICA

Phone: +56 232 13 3600
 servicelatam@truemfg.com
 9:00am – 5:30pm M-F

UK, IRELAND, MIDDLE EAST, AFRICA AND INDIA

Phone: +44 (0) 1709 888 080
 UK Freephone: 0 800 783 2049
 service-emea@truemfg.com
 8:30am – 5:00pm M-F

EUROPEAN UNION AND COMMONWEALTH OF INDEPENDENT STATES

Phone: +49 (0) 7622 6883 0
 service-emea@truemfg.com
 8:00am – 5:00pm M-F

AUSTRALIA

Phone: +61 2 9618 9999
 service-aus@truemfg.com
 8:30am – 5:00pm M-F



Single & Double Overshelf Installation

Model(s) – TFP/TUC/TSSU/TPP

Step 4

Install the shelves.

1. With the provided Phillips bolts, secure the backstop to the shelf. See fig. 3.
2. Lower the shelf onto the shelf supports. See fig. 4.
3. With the provided hex bolts, secure the shelf at the desired height. See fig. 5.

NOTE: Use two sets of hardware for each side. See fig. 5. For double overshelves, secure the lower shelf first.

Step 5

With the provided hole plugs, fill the unused holes in the support bars.

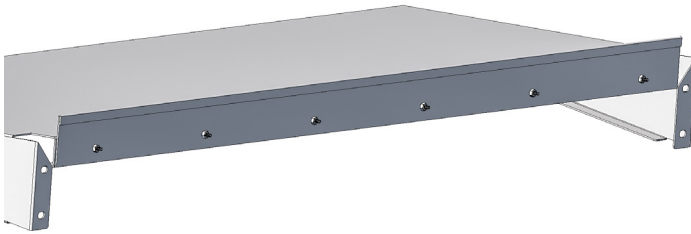


Fig. 3. Secure the backstop to the shelf before installation.



Fig. 2. For the TFP (a closed-back unit), remove the indicated screws to install the shelf supports.

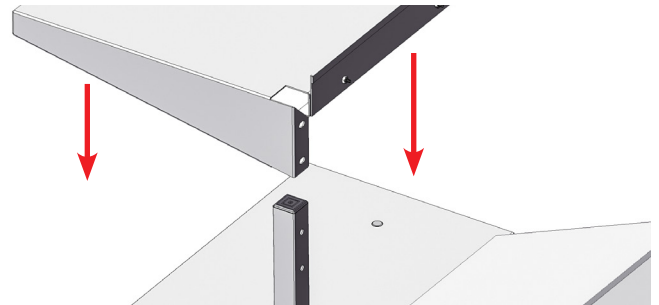


Fig. 4. Lower the shelves onto the supports.

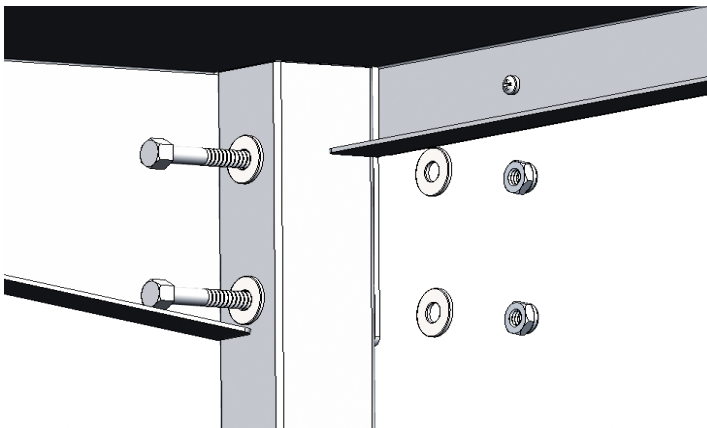


Fig. 5. Use two sets of hardware for each side of the shelf.