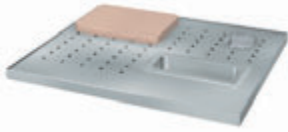




# Specifications

F.O.B Sedalia, Missouri 65301



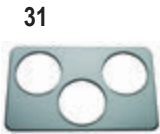
CS-2



576

Spillage Pans

676



31



32



33

Adapter Plates

## AGENCY LISTINGS:



**DUKE MANUFACTURING CO.**  
2305 N. Broadway  
St. Louis, MO 63102

800.735.3853 Toll Free  
314-231-1130 In Missouri  
314.231.5074 Fax  
www.dukemfg.com

## Approval Stamp(s):

### PRODUCT INFORMATION:

PROJECT: \_\_\_\_\_

ITEM: \_\_\_\_\_

QUANTITY: \_\_\_\_\_

MODEL:

### Drop-Ins

### Accessories/Options

- CS-2** Carving Station
- 576** Spillage Pan - aluminum
- 676** Spillage Pan - stainless steel
- 31** Adapter Plate
- 32** Adapter Plate
- 33** Adapter Plate
- FB** False Bottom - not shown
- HFST** Hot Food Style Top - not shown

### CARVING STATION:

- Removable, recessed, perforated stainless steel top - must use spillage pans
- Carving board
- 1/4 size au jus pan
- Meat spike

### SPILLAGE PANS:

- **576** Aluminum
- **676** Stainless Steel

### ADAPTER PLATES (for hot food units)

Available in the following configurations:

- **31** (3) 6-1/2" diameter cutouts
- **32** (2) 8-1/2" cutouts
- **33** (1) 6-1/2" and one 10-1/2" cutout

### FALSE BOTTOM (now shown)

- **FB** 1/2" deep sectional false bottom

### HOT FOOD STYLE TOP (not shown)

- **HFST** Beaded 12-1/16" x 20-1/16" openings in top - not available on NSF Standard 7 units

### SHORT FORM SPECIFICATIONS:

#### Duke Drop-Ins - Accessories.

**Carving Station** to have removable, recessed, perforated stainless steel top (must use spillage pans), carving board, 1/4 size au jus pan and meat spike.

**Spillage Pans.** #576 is aluminum, measuring 12" x 20" x 6-1/4"D; #676 is stainless steel, measuring 12" x 20" x 6-1/4"D.

**Adapter Plates.** #31 to have (3) 6-1/2" openings; #32 to have (2) 8-1/2" openings and #33 to have (1) 10-1/2" and (1) 6-1/2" openings

**False Bottom (FB):** For Cold Pan Units. 1/2" deep, sectional, stainless steel.

**Hot Food Style Top (HFST):** Beaded 12-1/16" x 20-1/16" openings in top - not available on NSF standard 7 units.

**DROP-INS -ACCESSORIES/OPTIONS**

- CS-2** Carving Station
- 576** Spillage Pan - aluminum
- 676** Spillage Pan - stainless steel
- 31** Adapter Plate
- 32** Adapter Plate
- 33** Adapter Plate
- FB** False Bottom - not shown
- HFST** Hot Food Style Top - not shown

**CARVING STATION:**

- Removable, recessed, perforated stainless steel top - must use spillage pans
- Carving board
- 1/4 size au jus pan
- Meat spike



**CS-2**

**SPILLAGE PANS:**

- **576** Aluminum
- **676** Stainless Steel



**576**

**ADAPTER PLATES (for hot food units)**

Available in the following configurations:

- **31** (3) 6-1/2" diameter cutouts
- **32** (2) 8-1/2" cutouts
- **33** (1) 6-1/2" and one 10-1/2" cutout



**676**

**Spillage Pans**

**FALSE BOTTOM (now shown)**

- **FB** 1/2" deep sectional false bottom

**HOT FOOD STYLE TOP (not shown)**

- **HFST** Beaded 12-1/16" x 20-1/16" openings in top - not available on NSF Standard 7 units



**Adapter Plates**



**DUKE MANUFACTURING CO.**

2305 N. Broadway  
St. Louis, MO 63102

800.735.3853 Toll Free  
800.231.1130 In Missouri  
314.231.5074 Fax  
[www.dukemfg.com](http://www.dukemfg.com)

Specification subject to change