

MODEL: \_\_\_\_\_ PROJECT: \_\_\_\_\_ ITEM #: \_\_\_\_\_ QTY: \_\_\_\_\_

### PRODUCT IMAGE



BR48L-BSB-LR SHOWN with  
OPTIONAL 1" TOP and KICK PLATES

**AVAILABLE IN 48" & 72" SIZES**

### OPTIONAL ACCESSORIES

- **BS-100** Four 6" Stainless Steel Legs
- **BS-101** Six 6" Stainless Steel Legs
- **BS-102** Four 4" Stainless Steel Legs
- **BS-103** Six 4" Stainless Steel Legs
- **BS-106** Left Side Stainless Steel Kick Plate
- **BS-107** Right Side Stainless Steel Kick Plate
- **BS-108** Four 3" Casters with brakes
- **BS-109** Six 3" Casters with brakes
- **BS-113** Replacement Plug-in Light (Old Style)
- **BS-148** 48" Stainless Steel Front Kick Plate
- **BS-172** 72" Stainless Steel Front Kick Plate
- **BS-500** 1/3 HP Remote Condensing Unit (134A)

### STANDARD FEATURES

- **Electrical**  
115 V, 60 Hz. Furnished with a terminal block inside the box for a hard wire connection (supplied by the end user)  
Dedicated 15 Amp circuit recommended.  
2 Door Model: 1.0 Full Load Amp  
3 Door Model: 1.5 Full Load Amp
- **Refrigeration**  
134A expansion valve installed (standard). Optional 404 expansion valve available. Thermostat not included.  
**IMPORTANT:** Specify left or right side hook-up
- **Operating Range**  
30°F-40°F
- **Case Capacity**

	<b>48"</b>	<b>72"</b>
Long Neck Bottles:	11.5	20
12 oz. Cans:	20	34
Wine Bottles (each):	106	170
- **Interior**  
20 gauge stainless steel.  
Two adjustable epoxy coated shelves with floor rack  
Door Opening: 29 11/16" high x 19 15/16" wide
- **Exterior**  
Sides: 20 gauge stainless steel or black vinyl  
Front: 20 gauge stainless steel, black vinyl or glass  
Back: 20 gauge galvanized steel  
Top: 20 gauge galvanized steel with option of stainless steel
- **Insulation**  
Foamed-in-place polyurethane
- **Plumbing**  
1/2" drain connection required for condensation. Drain line connection will be on the same side as the refrigeration line location selected. A 100 V Condensate Evaporator pan may be used in place of a drain line but it is important to make sure you have a good location for it. Please consult with your refrigeration installation company and check local codes.

*\* This equipment is intended for the storage and display of non-potentially-hazardous bottle or canned products only \**



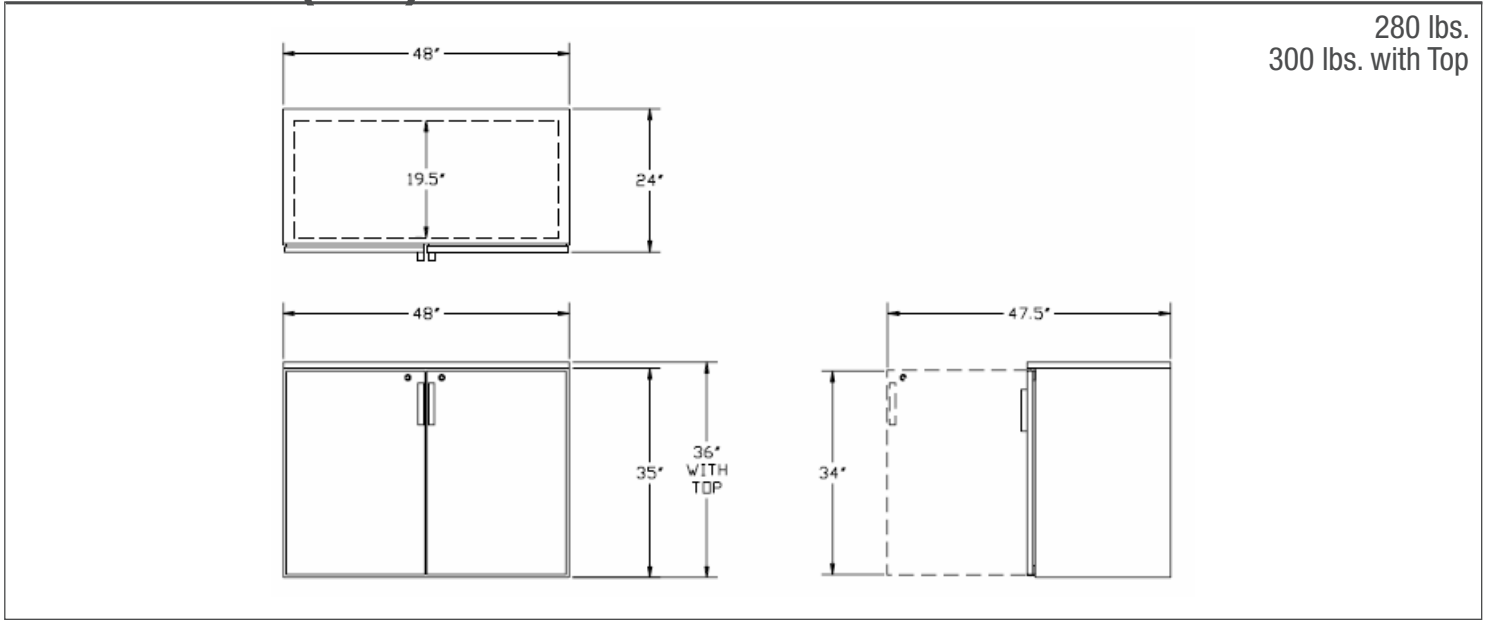
**APPROVED BY:**

**CERTIFICATIONS:**

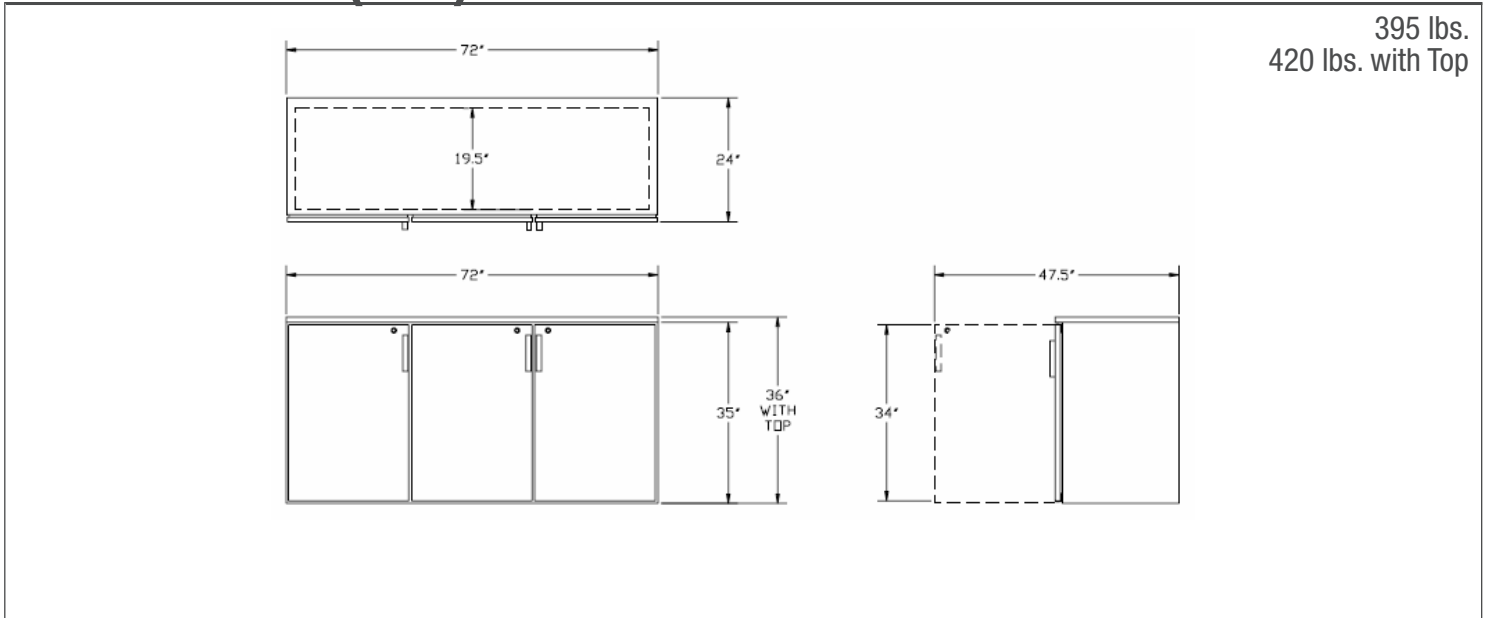
Due to our commitment to continued product improvement, specifications are subject to change without notice.

MODEL: \_\_\_\_\_ PROJECT: \_\_\_\_\_ ITEM #: \_\_\_\_\_ QTY: \_\_\_\_\_

### TWO DOOR (48")



### THREE DOOR (72")



**APPROVED BY:** \_\_\_\_\_

**CERTIFICATIONS:**

Due to our commitment to continued product improvement, specifications are subject to change without notice.