



T&S BRASS AND BRONZE WORKS, INC.

2 Saddleback Cove / P.O. Box 1088
Travelers Rest, SC 29690



REG. #A2601
ISO #9001

Model No.

EC-3100

Item No.

Travelers Rest, SC: 800-476-4103 Simi Valley, CA: 800-423-0150 Fax: 864-834-3518 www.tsbrass.com

This Space for Architect/Engineer Approval

Job Name _____ Date _____

Model Specified _____ Quantity _____

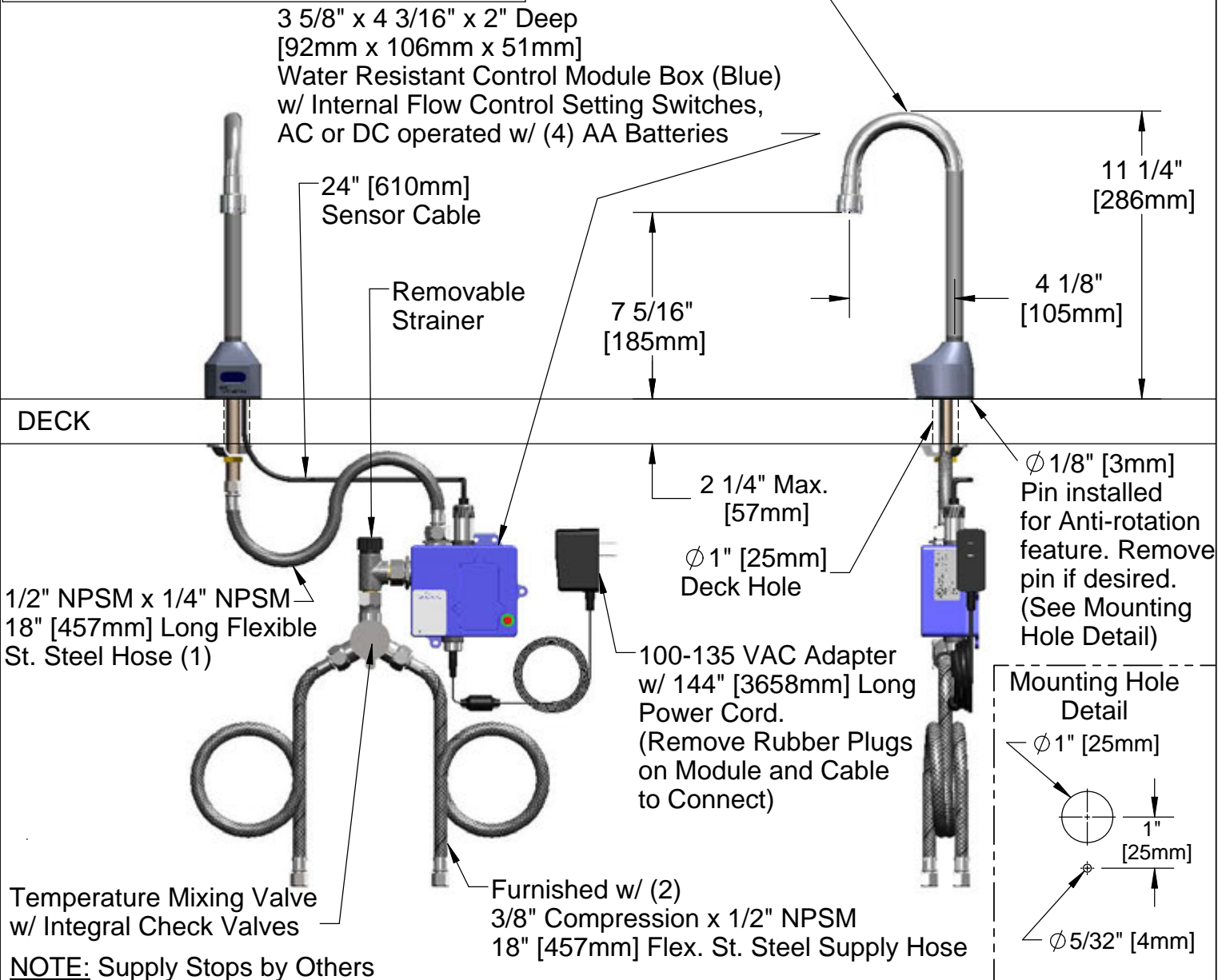
Customer/Wholesaler _____

Contractor _____

Architect/Engineer _____



ADA Compliant



NOTE: Supply Stops by Others

Product Specifications: **Chrome Plated Brass Electronic Faucet: Deck Mount Rigid Gooseneck w/ VR Aerator, AC/DC Control Module with Internal Flow Control Setting Switches, Temperature Control Mixing Valve w/ Integral Check Valves 18" Long Hot & Cold Supply Stop Flexible Connector Hoses**

| | | |
|---------------|-------------------|-----------------|
| Drawn GEF | Checked DMH | Approved JHB |
| Scale: NTS | Date: 08/23/10 | |



T&S BRASS AND BRONZE WORKS, INC.

2 Saddleback Cove / P.O. Box 1088
Travelers Rest, SC 29690



REG. #A2601
ISO #9001

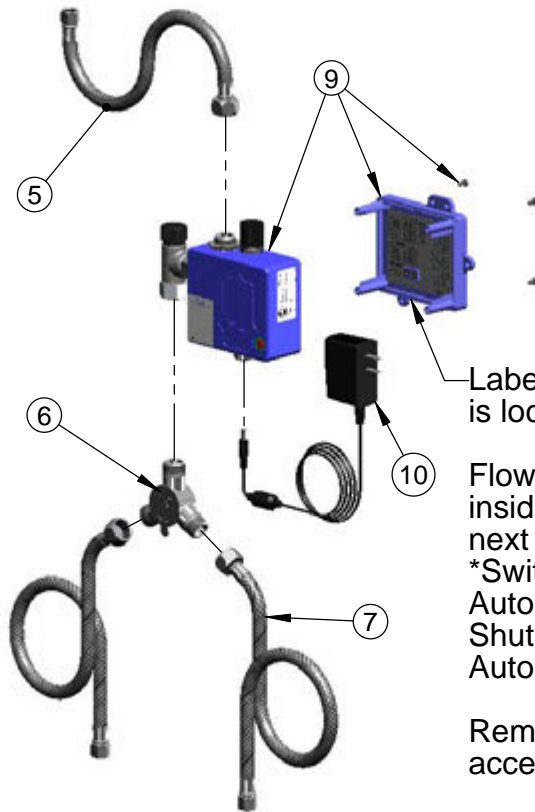
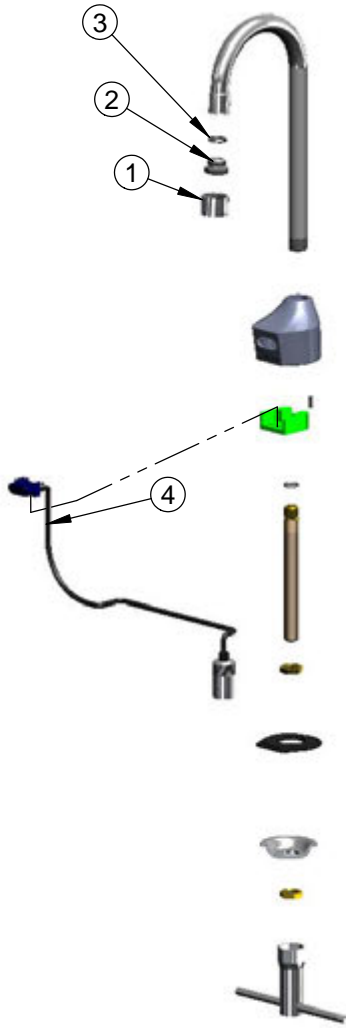
Model No.

EC-3100

Item No.

Travelers Rest, SC: 800-476-4103 Simi Valley, CA: 800-423-0150 Fax: 864-834-3518 www.tsbrass.com

| ITEM NO. | SALES NUMBER | DESCRIPTION |
|----------|--------------|---|
| 1 | B-0199-06 | VR Aerator w/ Key |
| 2 | 044A | 3/8" to Aerator Adapter |
| 3 | 006575-45 | -015 O-Ring |
| 4 | 017195-45 | Angled Sensor w/ Cable |
| 5 | 016297-45 | Inlet Hose, Faucet, 1/2" NPSM-F x 1/4" NPSM-F |
| 6 | 5EF-0006 | Mechanical Mixing Valve |
| 7 | 5EF-0005 | Supply Hose, 9/16-24 Female x 1/2" NPSM |
| 8 | 015425-45 | Vandal Resistant Key |
| 9 | 016647-45 | ChekPoint Module (Blue) |
| 10 | 5EF-0002 | A/C Transformer |



Label for Flow Control Switch Settings is located on Inside of Back Cover.

Flow Control Switches are located inside Module Housing in Black Box next to Battery Compartment.
*Switches are set to DEFAULT position:
Auto Time Out = 10 seconds
Shut Off Delay = 1 second
Auto Flush = OFF

Remove (4) screws and back cover to access switches.

***Available Water Flow Control Selections:**

(6) Auto Time Out Selections - 10 sec, 25 sec, 45 sec, 60 sec, 3 min, 20 min

(4) Shut Off Delay Selections - 1 sec, 2 sec, 4 sec, 10 sec

Auto Flush for 30 Seconds After Every 12 Inactive Hours - ON or OFF

Product Specifications: **Chrome Plated Brass Electronic Faucet: Deck Mount Rigid Gooseneck w/ VR Aerator, AC/DC Control Module with Internal Flow Control Setting Switches, Temperature Control Mixing Valve w/ Integral Check Valves 18" Long Hot & Cold Supply Stop Flexible Connector Hoses**

| | | |
|---------------|----------------|-------------------|
| Drawn GEF | Checked DMH | Approved JHB |
| Scale: NTS | | Date: 08/23/10 |