

# DUAL GPR DBC w/Lwr Fct & Fnl Lock

29.3" x 20.0" x 18.0"  
(74.4cm x 50.8cm x 45.7cm)



Servers and airpots sold separately

- Stores individual coffee recipes so operator can easily brew many varieties
- Coffee extraction controlled with pre-infusion and pulse-brew, digital temperature control and large sprayhead; coffee strength controlled with variable by-pass
- Operate any combination of BrewWISE equipment error-free with wireless brewer-grinder interface through the Smart Funnel
- Programmable freshness indication; message on display alerts when freshness timer expires and when warmers will automatically shut off
- Programmable warmer control; ability to program three time periods with distinct warmer output for each; default settings when this feature is activated is 1 hour at 100% power (100 watts) followed by 1 hour at 70% followed by 1 hour at 40%
- Energy Saver Mode reduces tank temperature during idle periods
- Each 1.5GPR portable server (included) has a Safety-Fresh® brew-through lid with vapor seal and spill protection
- Brews 1/2, 1 or 1 1/2gal (1.9, 3.8 or 5.7L) batches
- Create coffee recipe cards with BrewWISE recipe writer on your PC
- SplashGard® funnels deflect hot liquids away from the hand
- Energy saver mode reduces tank temperature during idle periods
- Funnel locks help improve safety

Agency:



## Specifications

**Product #:** 35900.0010

**Faucet:** Lower

**Water Access:** Plumbed

**Interface:** Wireless

**Finish:** Stainless

**Funnel:** Smart Funnel

## Additional Features

BrewWISE

## Electrical & Capacity

Volts	Amps	Watts	Cord Attached	Plug Type	8oz cups/hr 236ml cups/hr	Input H <sub>2</sub> O Temp.	Phase	# Wires plus Ground	Hertz
120/208-240	25.4-29	5158-6800	No	-	-	60°F (15.5°C)	1	3	60

## Plumbing Requirements

PSI	kPa	Fitting Supplied	Water Flow Required (GPM)
20-90	138-621	3/8" Male Flare Fitting	-

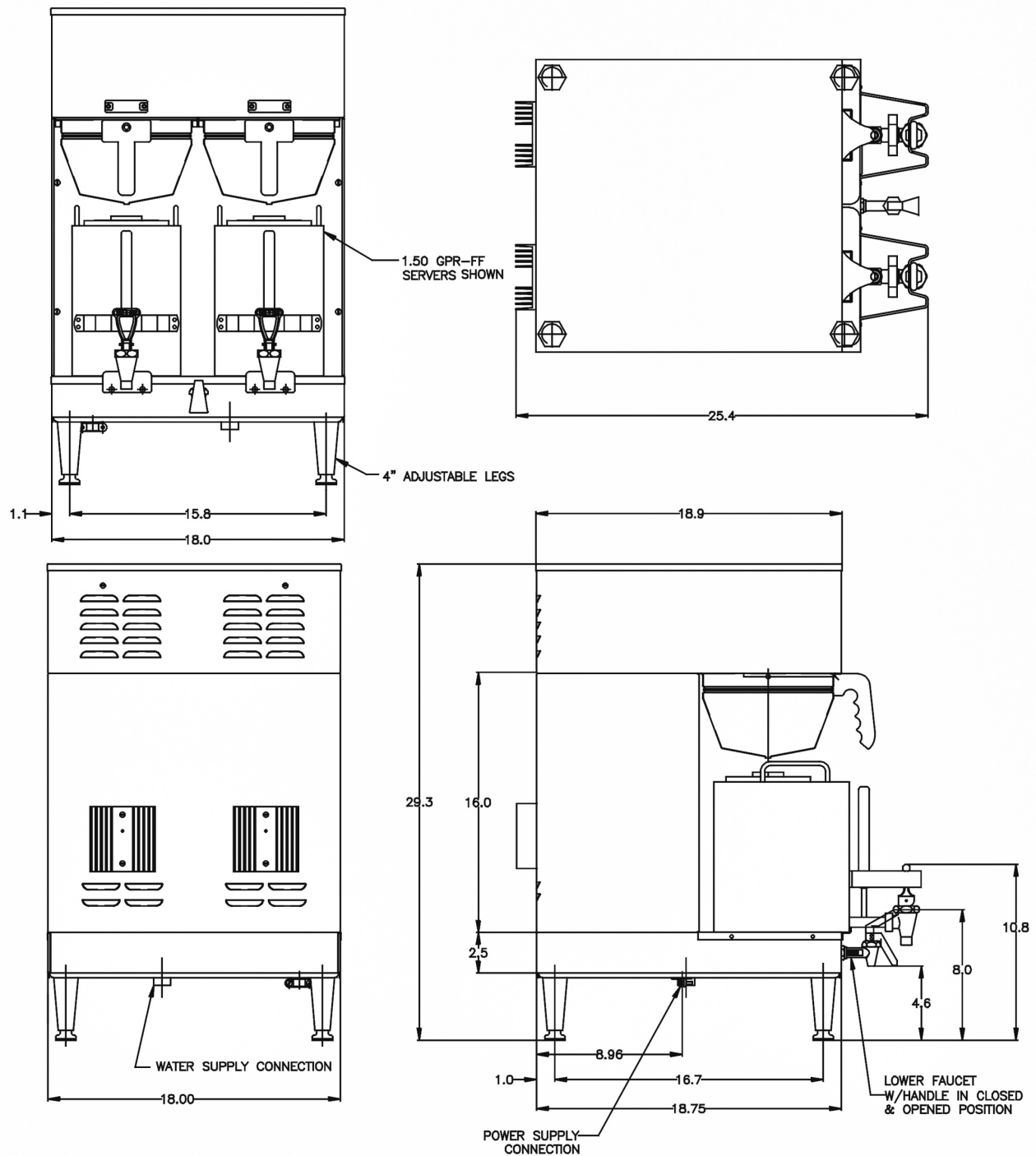
## CAD Drawings

2D	Revit	KLC
●		



BUNN® reserves the right to change specifications and product design without notice. Such revisions do not entitle the buyer to corresponding changes, improvements, additions or replacements for previously purchased equipment. For most current specifications and other info visit [bunn.com](http://bunn.com).

Created on:  
09/13/2017



	Unit			Shipping				
	Width	Height	Depth	Width	Height	Depth	Weight	Volume
English	18.0 in.	29.3 in.	20.0 in.	-	-	-	96.550 lbs	12.760 ft <sup>3</sup>
Metric	45.7 cm	74.4 cm	50.8 cm	-	-	-	43.795 kgs	0.361 m <sup>3</sup>



BUNN® reserves the right to change specifications and product design without notice. Such revisions do not entitle the buyer to corresponding changes, improvements, additions or replacements for previously purchased equipment. For most current specifications and other info visit [bunn.com](http://bunn.com).

Created on:  
09/13/2017

# Related Products & Accessories: DUAL GPR DBC w/Lwr Fct & Fnl Lock(35900.0010)



RWS1, 120V

Product #: 12203.0010



PARRILLA

Product #: 12203.0010



RWS1, 120V-SATIN NKL LEGS

Product #: 12203.0014



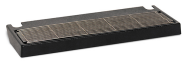
FILTERS, GOURMET 500 500/1 50/CL

Product #: 20138.1000



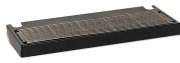
PAPEL FILTRANTE

Product #: 20138.1000



DRIP TRAY KIT, DUAL & SH

Product #: 27150.0000



CHAROLA CON ACCESORIOS

Product #: 27150.0000



G9-2T DBC

Product #: 33700.0000



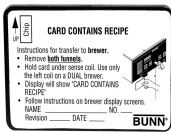
MOLINO

Product #: 33700.0000



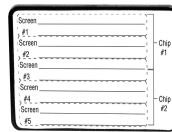
BREWWISE RECIPE WRITER

Product #: 34444.0000



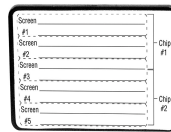
CARD ASSY, RECIPE TRANSFER(BRW)

Product #: 34447.0000



CARD ASSY, TRANSFER-AD (BRW)

Product #: 34448.0000



TARJETA

Product #: 34448.0000



WATER FILTER, EQHP-25L

Product #: 39000.0002



WATER FILTER, EQHP-25

Product #: 39000.0005



BUNN® reserves the right to change specifications and product design without notice. Such revisions do not entitle the buyer to corresponding changes, improvements, additions or replacements for previously purchased equipment. For most current specifications and other info visit [bunn.com](http://bunn.com).

Created on:  
09/13/2017

# Serving & Holding Options: DUAL GPR DBC w/Lwr Fct & Fnl Lock(35900.0010)



RWS1, 120V

Product #:12203.0010



PARRILLA

Product #:12203.0010



RWS1, 120V-SATIN NKL  
LEGS

Product #:12203.0014



1.5GPR-FF, TOP HNDL

Product #:20950.0004



CONTENEDOR

Product #:20950.0004



BUNN® reserves the right to change specifications and product design without notice. Such revisions do not entitle the buyer to corresponding changes, improvements, additions or replacements for previously purchased equipment. For most current specifications and other info visit [bunn.com](http://bunn.com).

Created on:  
09/13/2017