

DUAL SH DBC® SST

Height: 36.0" Width: 18.0" Depth: 23.5"
(91.4cm) (45.7cm) (59.7cm)



- Brews 1/2, 1 or 1 1/2 gallon (1.9, 3.8 or 5.7L) batches
- Brews up to 19.3gallons (73.1L) of perfect coffee per hour
- No hot surfaces in coffee holding area
- Reduce accidents with safety features that decrease hot splashes from funnel, eliminate brewing when funnel or server is not present
- Patented server heat control automatically shuts off once target temperature is reached (Can be set to 175°-190°F (79.4°-87.8°C))
- Simplify installation and calibration by creating your own recipe cards and dedicated funnels with the BrewWISE Recipe Writer using your PC (Windows® compatible).
- SplashGard® funnels deflect hot liquids away from the hand
- Energy saver mode reduces tank temperature during idle periods
- Operate any combination of BrewWISE equipment error-free with wireless brewer-grinder interface through Smart Funnel with SplashGard®
- Stores individual coffee and flavor profiles using adjustable water volume, bypass percentage, pulse brew, and pre-infusion timing
- Troubleshoot all switches and electrical components from the front panel with advanced diagnostic service tools
- Servers not included unless otherwise noted

Server(s) sold separately

Agency:



Specifications

Product #: 33500.0000

Funnel: Smart Funnel

Water Access: Plumbed

Faucet: Upper

Interface: Wireless

Finish: Stainless

Additional Features

BrewWISE

Electrical & Capacity

| Volts* | Amps | Watts | Cord Attached | Plug Type | 8oz cups/hr 236ml cups/hr | Input H ₂ O Temp. | Phase | # Wires plus Ground | Hertz |
|-------------|-----------|-----------|---------------|-----------|------------------------------|------------------------------|-------|---------------------|-------|
| 120/208-240 | 23.9-29.1 | 4980-6800 | No | - | 309 | 60°F (15.5°C) | 1 | 3 | 60 |

*When a BUNN is machine rated 120/208-240V, 120/208V or 120/240V, the higher voltage is the supply voltage needed to power the machine. The 120V is there to supply power to some components rated 120V in the machine, but it is not the supply voltage and would not power the machine if the machine is marked with the before mentioned ratings.

Plumbing Requirements

| PSI | kPa | Fitting Supplied | Water Flow Required (GPM) |
|-------|---------|-------------------------|---------------------------|
| 20-90 | 138-621 | 1/4" Male Flare Fitting | - |

CAD Drawings

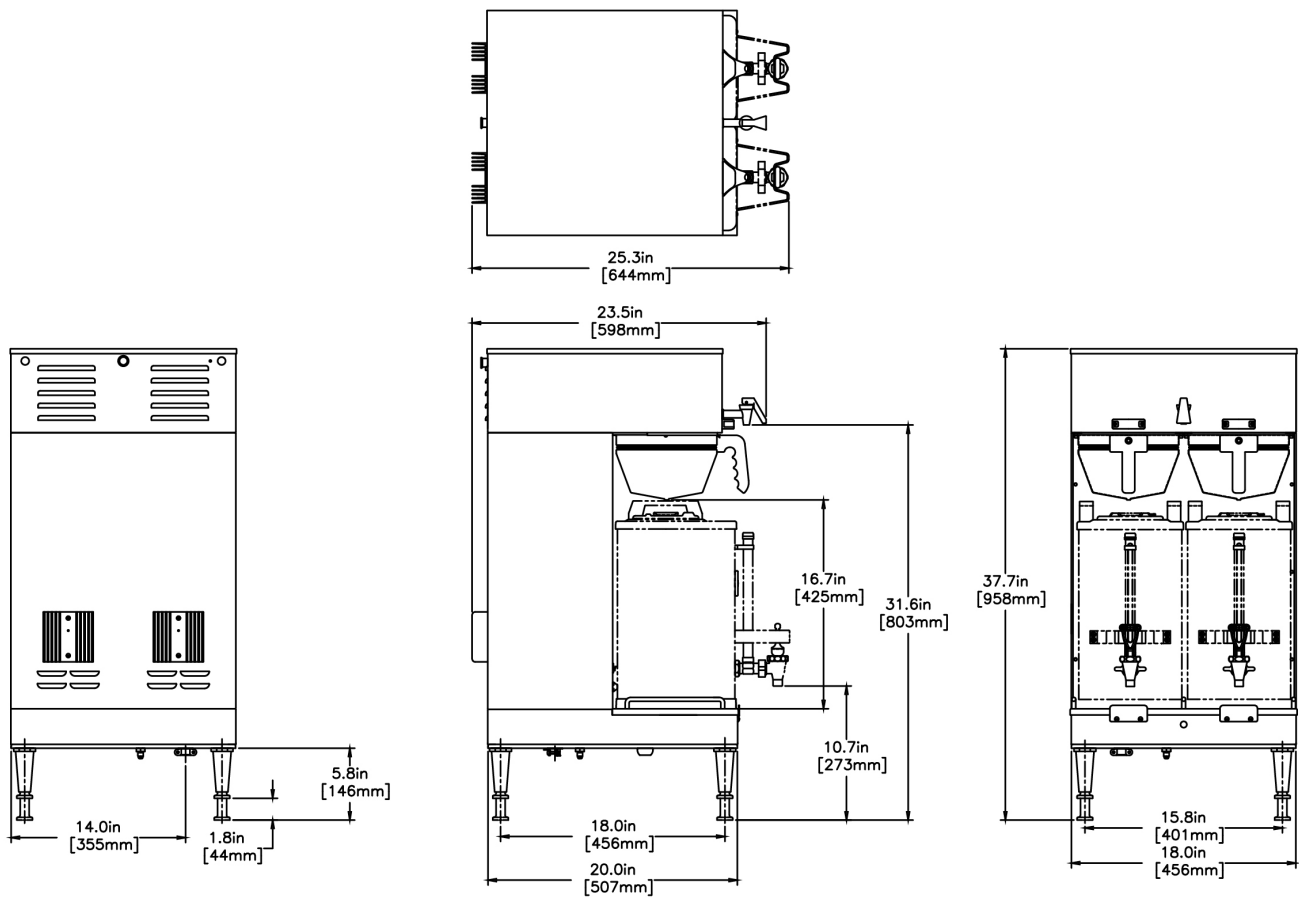
| 2D | Revit | KLC |
|----|-------|-----|
| ● | | |

WARNING:



BUNN® reserves the right to change specifications and product design without notice. Such revisions do not entitle the buyer to corresponding changes, improvements, additions or replacements for previously purchased equipment. For most current specifications and other info visit bunn.com.

Last Updated:
04/29/2022



| Unit | | | Shipping | | | | | |
|---------|----------|----------|----------|----------|----------|----------|------------|------------|
| | Height | Width | Depth | Height | Width | Depth | Weight | Volume |
| English | 36.0 in. | 18.0 in. | 23.5 in. | 39.8 in. | 21.6 in. | 27.1 in. | 89.250 lbs | 13.493 ft³ |
| Metric | 91.4 cm | 45.7 cm | 59.7 cm | 101.0 cm | 54.9 cm | 68.9 cm | 40.484 kgs | 0.382 m³ |



BUNN® reserves the right to change specifications and product design without notice. Such revisions do not entitle the buyer to corresponding changes, improvements, additions or replacements for previously purchased equipment. For most current specifications and other info visit bunn.com.

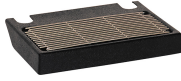
Last Updated:
04/29/2022

Related Products & Accessories: DUAL SH DBC® SST(33500.0000)



FILTERS, GOURMET 500
500/1 50/CL

Product #: 20138.1000



DRIP TRAY KIT, SINGLE
STD & SH

Product #: 26830.0000



DRIP TRAY KIT, DUAL &
SH

Product #: 27150.0000



1SH STAND, 120V

Product #: 27825.0000



1SH STAND, 120V BLK

Product #: 27825.0003



2SH STAND, 120V

Product #: 27875.0000



2SH STAND, 120V BLK

Product #: 27875.0003



FUNNEL ASSY, W/
INSERTS SMTF

Product #: 32643.0000

CARD ASSY, RECIPE
TRANSFER (BRW)

Product #: 34447.0016



WATER FILTER,
EQHP-25L

Product #: 39000.0002



WATER FILTER,
EQHP-25

Product #: 39000.0005



SYSTEM, WQ-55(3).2L

Product #: 56000.0002



SYSTEM, WQ-55(3).2

Product #: 56000.0005



SYSTEM, WEQ-25(2).2L

Product #: 56000.0025



SYSTEM, WEQ-25(2).2

Product #: 56000.0028



CARTRIDGE, WQ-55
(3).2L

Product #: 56000.0102



CARTRIDGE, WQ-55(3).2

Product #: 56000.0105



CARTRIDGE, WEQ-25
(2).2L

Product #: 56000.0123



CARTRIDGE, WEQ-25
(2).2

Product #: 56000.0124



BUNN® reserves the right to change specifications and product design without notice. Such revisions do not entitle the buyer to corresponding changes, improvements, additions or replacements for previously purchased equipment. For most current specifications and other info visit bunn.com.

Last Updated:
04/29/2022

Serving & Holding Options: DUAL SH DBC® SST(33500.0000)



SH SERVER, 1.5G/5.7L
NO FL ADJ TMR

Product #:27850.0001



SH SERVER, 1.5G/5.7L
BLK NO FL ADJ TMR

Product #:27850.0004



SH SERVER, 1.5G/5.7L
45 MIN ADJ TMR

Product #:27850.0006



SH SERVER, 1.5G BLK
60 MIN ADJ TMR

Product #:27850.0008



SH SERVER, 1.5G 120
MIN ADJ TMR AUTO OFF

Product #:27850.0009



SH SERVER, 1.5G/5.7L
240 MIN ADJ TMR

Product #:27850.0016



SH SERVER, 1.5G/5.7L
BLK 120 MIN ADJ TM

Product #:27850.0022



SH-S SERVER 1G 60
MIN ADJ TMR

Product #:27850.0046



BUNN® reserves the right to change specifications and product design without notice. Such revisions do not entitle the buyer to corresponding changes, improvements, additions or replacements for previously purchased equipment. For most current specifications and other info visit bunn.com.

Last Updated:
04/29/2022