



HIGH VOLUME PORTABLE BAR WITH STAINLESS STEEL WORK AREA (TOP, BACK & SIDES)



Item #:	_____	Qty #:	_____
Model #:	_____		
Project #:	_____		

Designed For Heavy-Duty Use. Perfect for High Volume or Dual Operation!

**Custom Colors Available!
(Exterior Only. See below for details)**

FEATURES:

Corrugated Stainless Steel Work Top, Back and Sides
Two 19" x 13-1/2" x 11" insulated ice bins. Complete with drains & shut-off valves

R-8-B-7 MODEL:

Two 19" x 13-1/2" x 11" insulated ice bins with one 7 Circuit Post Mix Cold Plate in right ice bin.
Stainless Steel bottom, complete with drains & shut-off valves
Dual speed rails to hold up to 10 bottles of liquor
Two Towel Rings
One Bottle Cap Catcher
Open bottom shelf for glass rack storage
4 - 6" Heavy Duty Swivel Casters, 2 with brakes

MATERIAL:

CONSTRUCTION: Mica Laminated, black finish
Stainless steel bottom
WORK AREA: Stainless Steel top, back and sides
CASTERS: Rubber
SPEED RAILS: Stainless Steel

Model #	Size L x W x H	Bar Top Width	Cubic Feet	Weight
R-8-B	95.75" x 24.5" x 47"	12"	120	550
R-8-B-7	95.75" x 24.5" x 47"	12"	120	750

Available Accessories

Three Sided Continuous Bumper - **Model SU-80**
Custom Mica Colors - **Model SU-81**
(Custom colors include exterior finishes only (Bar front and sides. Additional charge for bar top.
All interiors are standard black finish)

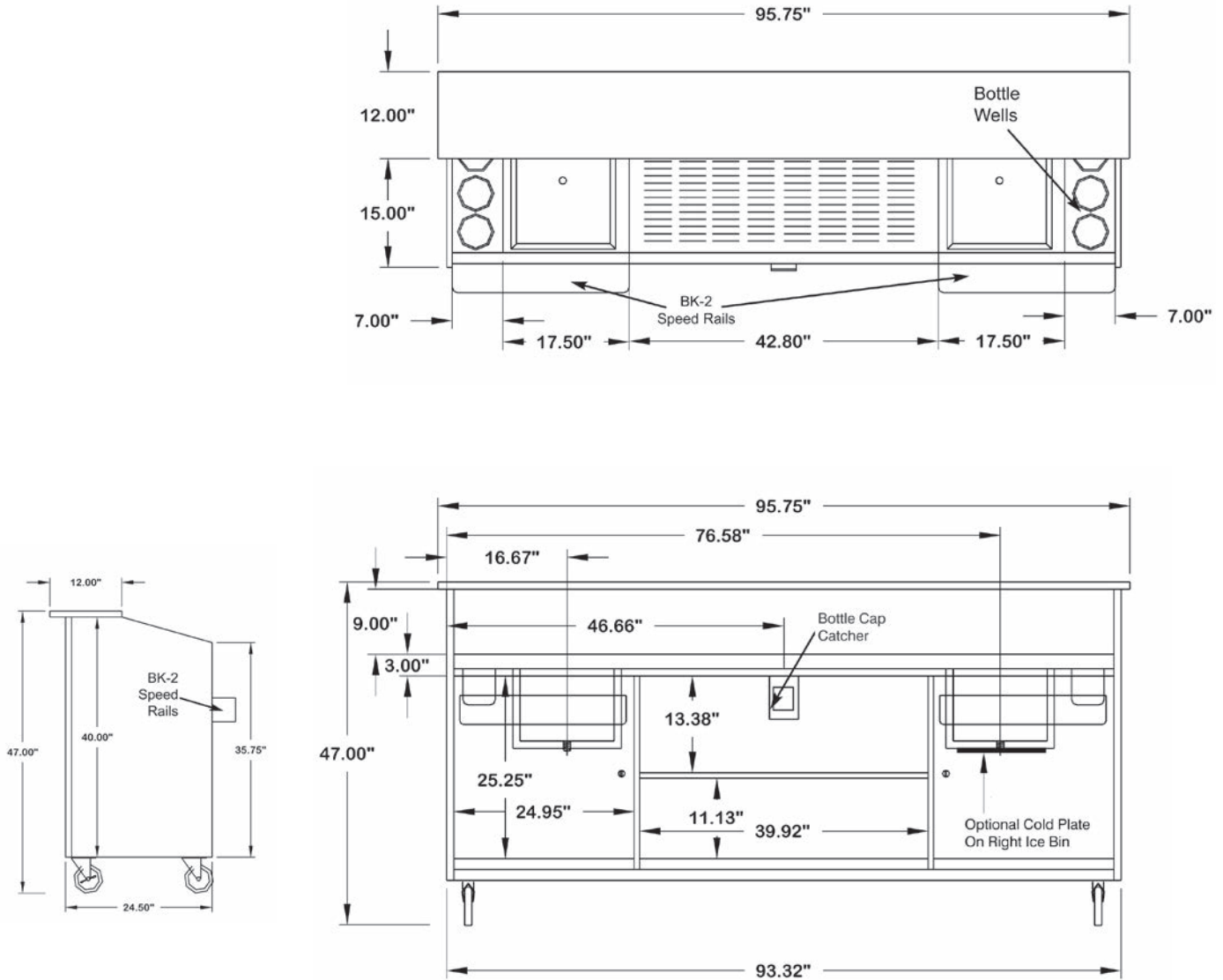
<p>ADVANCE TABCO SMART FABRICATION™ www.advancetabco.com</p>	Customer Service Available To Assist You 1-800-645-3166 8:30 am - 8:00 pm E.S.T.	
	For Orders & Customer Service:	For Smart Fabrication™ Quotes:
	Email: customer@advancetabco.com or Fax: 631-242-6900	Email: smartfab@advancetabco.com or Fax: 631-586-2933

DIMENSIONS and SPECIFICATIONS

TOL ± .125"

ALL DIMENSIONS ARE TYPICAL

R-8-B SERIES



REF-Z

200 Heartland Boulevard, Edgewood, NY 11717-8380

ADVANCE TABCO is constantly engaged in a program of improving our products. Therefore, we reserve the right to change specifications without prior notice.

© ADVANCE TABCO, SEPTEMBER 2015