



SOLID TOP TABLES



These units are designed to be used to showcase fine foods, dessert displays, or as beverage stands.

FEATURES:

Stainless steel body and top
Stainless steel 8" support shelf with removable
3/8" thick poly cutting board - Ships K.D.

MATERIAL:

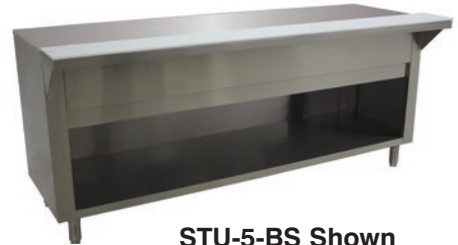
TOP: 20 gauge #302 stainless steel
BODY: 22 gauge #430 stainless steel
CUTTING BOARD: White Thermoplastic
CUTTING BOARD BRACKETS: 16 gauge, #302 stainless steel

	UNDERSHELF SERIES	-BS and -DR SERIES
TOP	20 Gauge #302 Stainless Steel	22 Gauge #430 Stainless Steel
LEGS	1 5/8" Dia. Tubular Galvanized Steel Leg w/ Plastic Bullet Feet	18 Gauge Stainless Steel Bolt-On Legs w/ Bullet Feet
LOWER SHELF	Galvanized Undershef	18 Gauge Stainless Steel

Item #: _____ Qty #: _____
Model #: _____
Project #: _____



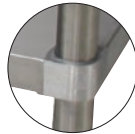
Optional TA-255P Casters Available



STU-5-BS Shown



STU-3 Shown



Featuring as Standard:
"THE PROVEN"
ORIGINAL ADVANCE TABCO
Adjustable Undershef with Die Cast Leg Clamp



STU-5-DR Shown

Model #	Length (L)	Width	Inside Cabinet Dimensions	Weight (lbs)	Cubic Feet
TABLE WITH UNDERSHELF					
STU-2	31-13/16"	22.625"	N/A	90 lbs.	28
STU-3	47-1/8"	22.625"	N/A	118 lbs.	41
STU-4	62-7/16"	22.625"	N/A	150 lbs.	55
STU-5	77-3/4"	22.625"	N/A	168 lbs.	67
TABLES WITH ENCLOSED BASE					
STU-2-BS	31-13/16"	22.625"	25.3" x 22.4" x 16"	115 lbs.	28
STU-3-BS	47-1/8"	22.625"	40.63" x 22.4" x 16"	143 lbs.	41
STU-4-BS	62-7/16"	22.625"	55.88" x 22.4" x 16"	185 lbs.	55
STU-5-BS	77-3/4"		71.25" x 22.4" x 16"	203 lbs.	67
TABLES WITH CABINET BASE AND SLIDING DOORS					
STU-2-DR	31-13/16"	22.625"	25.3" x 22.4" x 16"	125 lbs.	28
STU-3-DR	47-1/8"	22.625"	40.63" x 22.4" x 16"	153 lbs.	41
STU-4-DR	62-7/16"	22.625"	55.88" x 22.4" x 16"	195 lbs.	55
STU-5-DR	77-3/4"	22.625"	71.25" x 22.4" x 16"	213 lbs.	67



Customer Service Available To Assist You **1-800-645-3166** 8:30 am - 8:00 pm E.S.T.

For Orders:

Email: customer@advancetabco.com or Fax To: 631-242-6900

For Smart Fabrication™ Quotes:

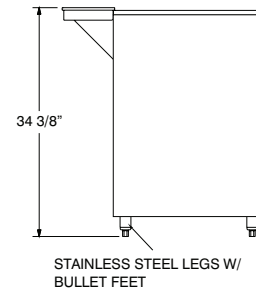
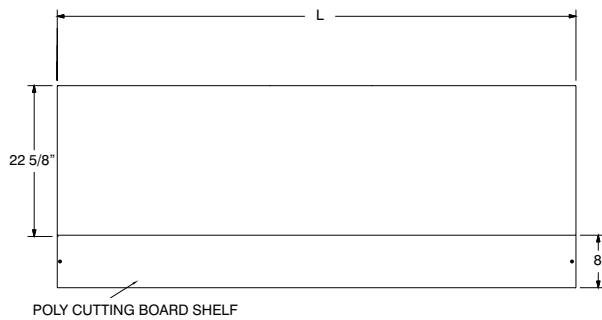
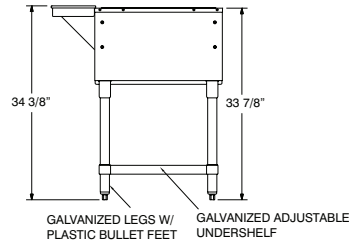
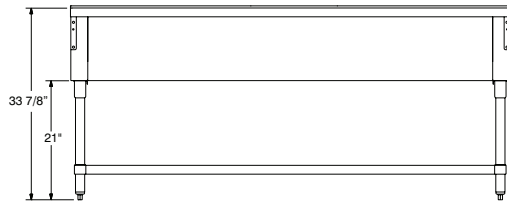
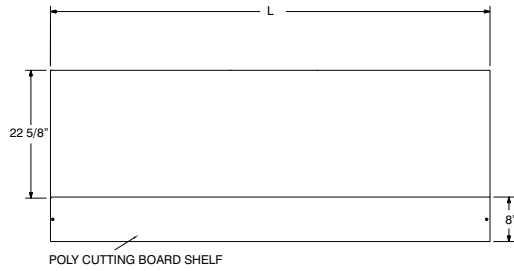
Email: smartfab@advancetabco.com or Fax To: 631-586-2933

DIMENSIONS and SPECIFICATIONS

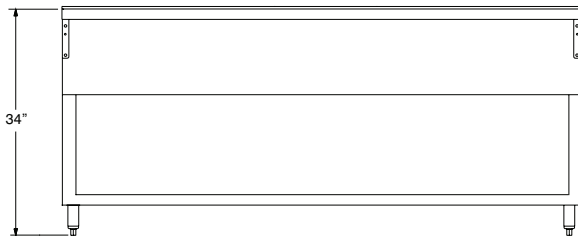
TOL ± .125"

ALL DIMENSIONS ARE TYPICAL

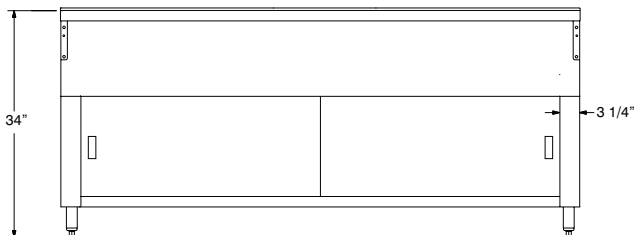
UNDERSHELF SERIES



-BR SERIES



-DR SERIES



Stainless Steel Legs & Undershelf Upgrade



2 Well Table	3 Well Table	4 Well Table	5 Well Table
SU-23A	SU-23B	SU-23C	SU-23D

