

Item #: _____	Qty #: _____
Model #: _____	
Project #: _____	

Single Bowl	Double Bowl	Size
Model#	Model#	A B
TA-11A**	TA-11A-2**	16" x 20" x 8"
TA-11B**	TA-11B-2**	16" x 20" x 12"
TA-11C	TA-11C-2	20" x 20" x 8"
TA-11D*	TA-11D-2*	20" x 20" x 12"
TA-11E*	TA-11E-2*	24" x 24" x 14"
TA-11F	TA-11F-2†	10" x 14" x 10"
TA-11J	TA-11J-2	14" x 16" x 12"
TA-11L	TA-11L-2	18" x 24" x 14"
TA-11N	TA-11N-2	18" x 18" x 14"
TA-11P	TA-11P-2	20" x 24" x 14"
TA-11Q	TA-11Q-2	10" x 14" x 5"
TA-11R*	TA-11R-2*	24" x 36" x 14"
TA-11S*	TA-11S-2*	20" x 30" x 14"
TA-11T*	TA-11T-2*	24" x 30" x 14"

Includes Lead Free Compliant Faucet & K-6 Basket Drain(s)

### Flat Top, 1", 1-1/2" & 5 Backsplash Include Deck Mount Faucet

- Single Sink Bowl provided with K-50 Swing Spout Faucet
- Double Sink Bowls provided with K-53 Swing Spout Faucet

### 10" Backsplash Include Splash Mount Faucet

- Single & Double Sink Bowls provided with K-1 Swing Spout Faucet
- Splash Mount Faucet Available On 5" Backsplash - Add TA-11Z



*Flat Top  
w/ K-50  
Deck Mount  
Faucet Shown*



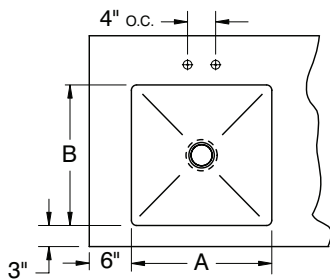
*10" Backsplash  
w/ K-1  
Splash Mount  
Faucet Shown*

\* Only Installed In Tables 30" Wide or Wider

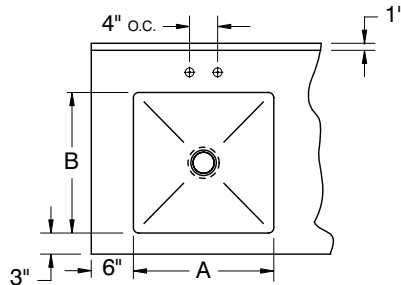
\*\* Bowls Are Turned In 24" Wide Tables

† K-50 Swing Spout Faucet (Double Bowl)

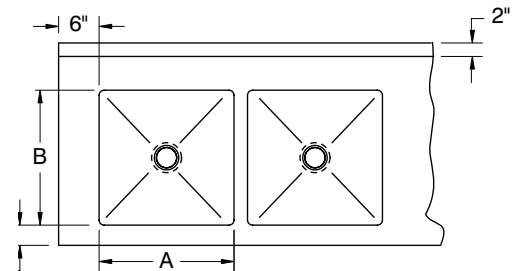
#### FLAT TOP, 1" or 1-1/2" REAR SPLASH



#### 5" REAR SPLASH with 1" RETURN



#### 10" REAR SPLASH with 2" RETURN



## Faucets & Accessories

_____ K-2B	Poly-Vance Sink Cutting Board for 14" x 16" Bowls	_____ K-55	8 1/2" Spout 4" O.C. Deck Mounted Gooseneck Faucet
_____ K-2C	Poly-Vance Sink Cutting Board for 16" x 20" Bowls	_____ K-60	4" O.C. Splash Mounted Gooseneck Faucet
_____ K-2D	Poly-Vance Sink Cutting Board for 18" x 24" Bowls	_____ K-62	X.H.D. 4" O.C. Deck Mounted Gooseneck Faucet
_____ K-2E	Poly-Vance Sink Cutting Board for 20" x 20" Bowls	_____ K-105	14" Splash Mounted 8" O.C. Faucet
_____ K-2F	Poly-Vance Sink Cutting Board for 24" x 24" Bowls	_____ K-112	Extra Heavy Duty 12" Splash Mounted Faucets
_____ K-2J	Poly-Vance Sink Cutting Board for 18" x 18" Bowls	_____ K-316-LUHA	Wrist Handles For Splash Mounted Faucets
_____ K-4	Lever Drain Bracket	_____ K-350	Residential Finish & Packaging
_____ K-5	Lever Drain	_____ K-452	6" x 9" Control Bracket
_____ K-12	Deck Mounted Soap Dispenser	_____ K-453	14" x 16" Control Bracket
_____ K-15	Lever Drain With Overflow	_____ K-460	Installation Of Disposal Cone w/ 6" x 9" Control Bracket
_____ K-50	8" Deck Mounted 4" O.C. Swing Spout Faucet	_____ K-461	Installation Of Collar w/ 6" x 9" Control Bracket
_____ K-50OMIT	Omit Swing Spout	_____ K-470	14" Deep Bowls
_____ K-52	3 1/2" Spout Deck Mounted 4" O.C. Gooseneck Faucet	_____ K-472	Faucet Hole Revision
_____ K-52OMIT	Omit Swing Spout Gooseneck Faucet	_____ DTA-100	Prerinse Basket for 20" x 20" Bowls
_____ K-53	12" Deck Mounted 4" O.C. Swing Spout Faucet	_____ DTA-125	Prerinse Basket for 16" x 20" Bowls
_____ K-54	8-1/4" Water Filler Faucet		
_____ K-54A	12" Water Filler Faucet		