



Item No. \_\_\_\_\_

DOUGH DIVIDER  
BMDBR03

Features:

- Stainless steel construction
- Practical and easy to adjust
- Compact design.
- Countertop Model
- Easy to operate
- Quick cleanup.

Other specifications:

- Rounding capacity: 50 to 1200 grams (3.1 – 75 oz)
- Output: 40-300 kg (88 – 661 lbs) per hour



The BakeMax® Dough Ball Rounder can round dough balls into approx. 50 to 1200 gram portions without any adjustment.

BakeMax

Think Quality, Value, Service.....Think

BakeMax®

# DOUGH DIVIDER BM

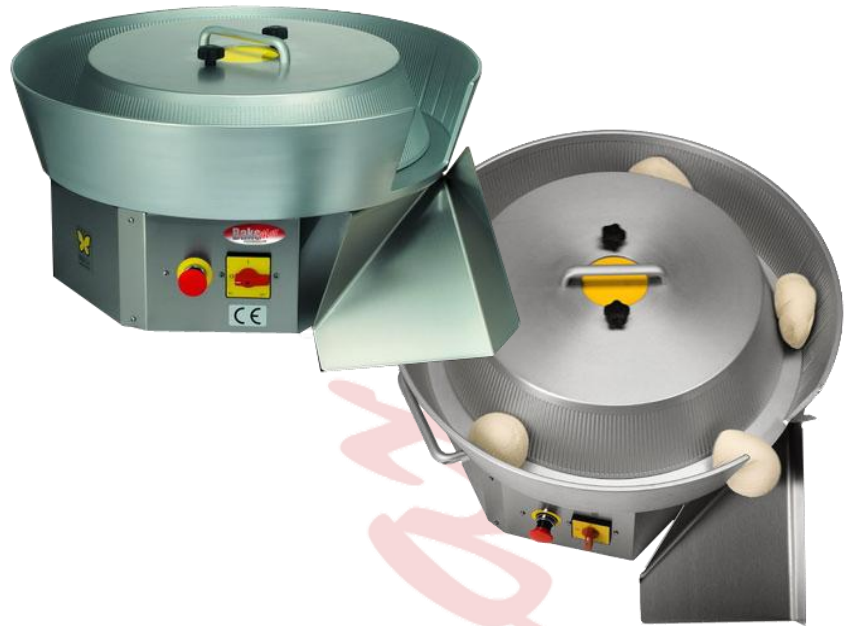
## Volume

External and Internal Dimensions (D x W x H)

Model	External
BMDBR03	30" x 30" x 23"

## Capacity

Model	Rounding Range	Hourly Production
BMDBR03	50 – 1200 g 3.1 – 75 oz	40 – 300 kg 88 – 661 lbs



## Electrical Information

Model	Voltage	Phase	Amps	Watts	Hertz	NEMA
BMDBR03	230		2.5	370	50	L15-20P

## Shipping Information

Model	Net Weight (kg)	Crated Weight(kg)	Crate Dimensions (D x W x H)
BMDBR03	61 kg (134.2 lbs)		



Authorized Dealer:

BakeMax, Inc.  
170 Millennium Blvd, Moncton, NB, E1C 1M8  
Toll Free: 1-800-565-BAKE  
Telephone: 1-506-858-8990  
Fax: 1-506-859-6929

**Think Quality, Value, Service.....Think**

**BakeMax**<sup>®</sup>

Toll Free: 1-800-565-BAKE

Web Site: [www.bakemax.com](http://www.bakemax.com)

E-mail: [sales@bakemax.com](mailto:sales@bakemax.com)

Printed in Canada