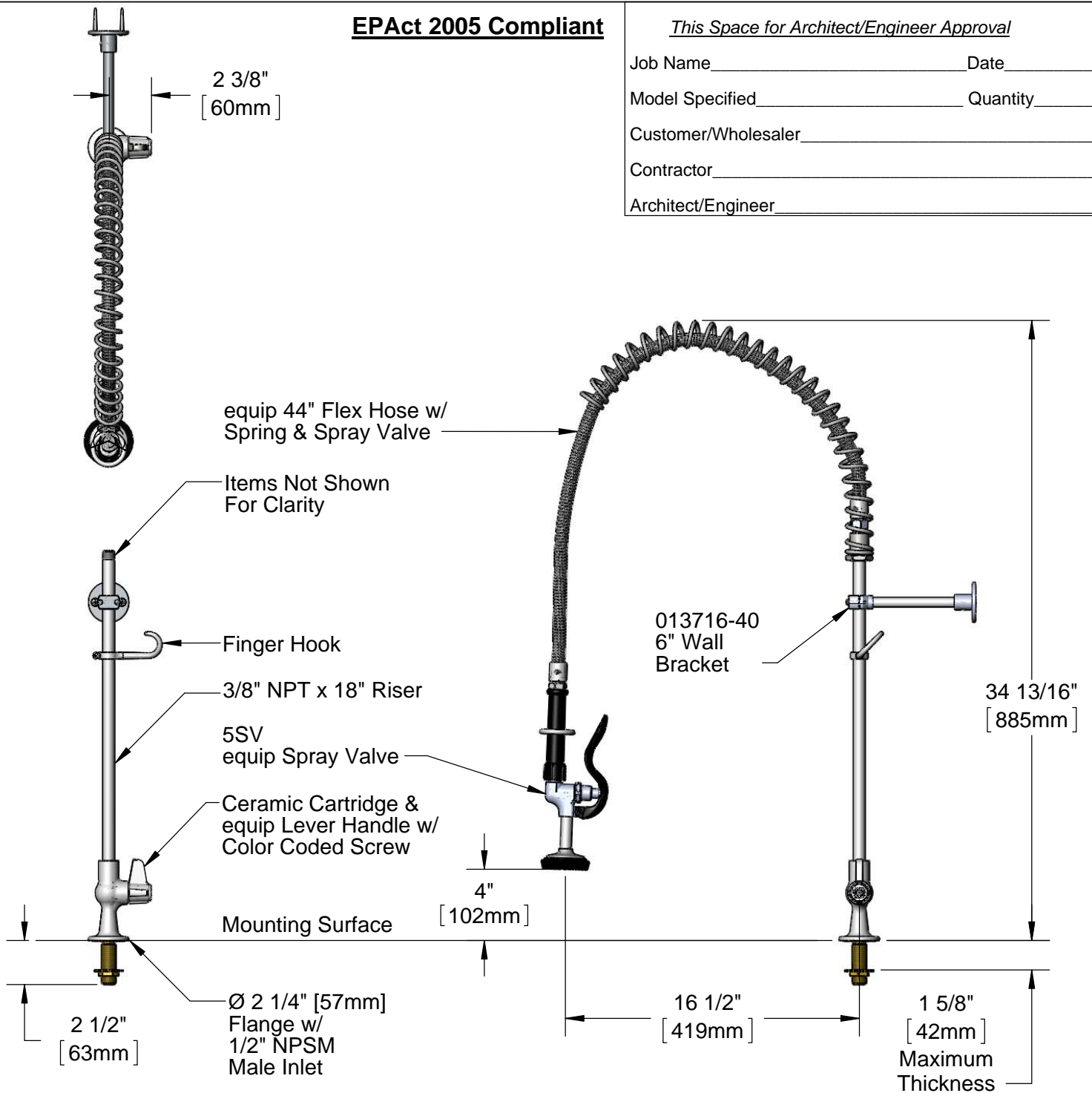


EPAct 2005 Compliant

This Space for Architect/Engineer Approval

Job Name _____ Date _____
 Model Specified _____ Quantity _____
 Customer/Wholesaler _____
 Contractor _____
 Architect/Engineer _____



Rough-In Requirement:
 Ø 1" [25mm] Mounting Hole

| | | | | | |
|--------------------------|------------------|--------------|--------------|----------------|-----------------|
| Model Number 5PR-1S00 | Date 08/08/12 | Scale 1:8 | Drawn DHL | Checked DMH | Approved JHB |
|--------------------------|------------------|--------------|--------------|----------------|-----------------|

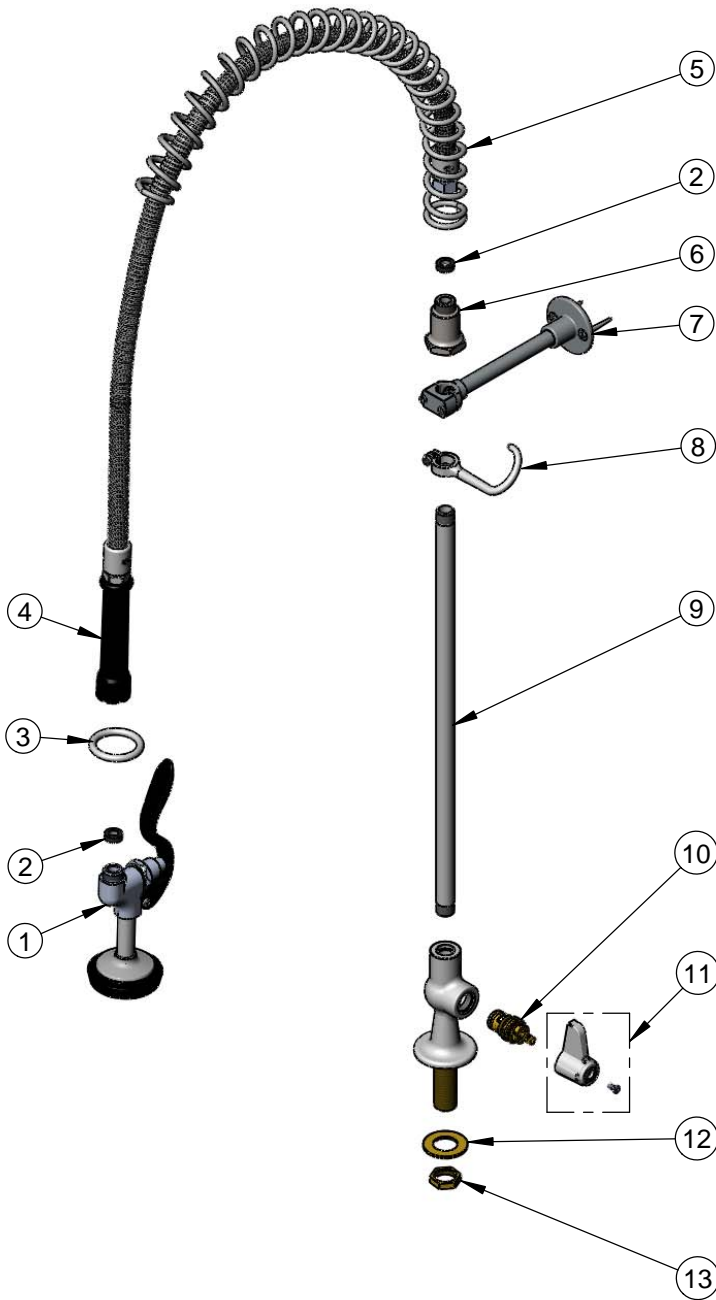


Product Specifications:

Pre-Rinse Unit: Single Hole Deck Mount Faucet, Ceramic Cartridge, equip 44" Flex Hose, 5SV equip Spray Valve, 6" Wall Bracket & 1/2 NPSM Male Inlet

equip Foodservice Accessories
 2 Saddleback Cove, P.O. Box 1088
 Travelers Rest, South Carolina 29690
 Phone: 800.891.4808 Fax: 800.868.0084

| ITEM NO. | SALES NO. | DESCRIPTION |
|----------|-----------|--|
| 1 | 5SV | equip Spray Valve |
| 2 | 010476-45 | #27 Washer |
| 3 | 000907-45 | Spray Valve Hold Down Ring |
| 4 | 5HSE44 | equip 44" Flex Hose (Includes Washers) |
| 5 | 014068-45 | Overhead Spring |
| 6 | 000821-40 | Spring Body |
| 7 | 013716-40 | 6" Wall Bracket |
| 8 | 004R | Finger Hook |
| 9 | 000369-40 | 3/8" NPT x 18" Long Riser |
| 10 | 013787-45 | equip Ceramic Cartridge, RTC |
| 11 | 5-HDL-L | equip Lever Handle w/ Color Coded Screws |
| 12 | 000999-45 | Brass Lock Washer |
| 13 | 002954-45 | Shank Lock Nut |



| | | | | | |
|--------------------------|------------------|--------------|--------------|----------------|-----------------|
| Model Number 5PR-1S00 | Date 08/08/12 | Scale NTS | Drawn DHL | Checked DMH | Approved JHB |
|--------------------------|------------------|--------------|--------------|----------------|-----------------|



Product Specifications:

Pre-Rinse Unit: Single Hole Deck Mount Faucet, Ceramic Cartridge, equip 44" Flex Hose, 5SV equip Spray Valve, 6" Wall Bracket & 1/2 NPSM Male Inlet

equip Foodservice Accessories
 2 Saddleback Cove, P.O. Box 1088
 Travelers Rest, South Carolina 29690
 Phone: 800.891.4808 Fax: 800.868.0084