



T&S BRASS AND BRONZE WORKS, INC.

2 Saddleback Cove / P.O. Box 1088
Travelers Rest, SC 29690

Model No.

B-0167

Item No.

Travelers Rest, SC: 800-476-4103 • Simi Valley, CA: 800-423-0150 • Fax: 864-834-3518 • www.tsbrass.com

EPAAct2005 Non-Compliant

This Space for Architect/Engineer Approval

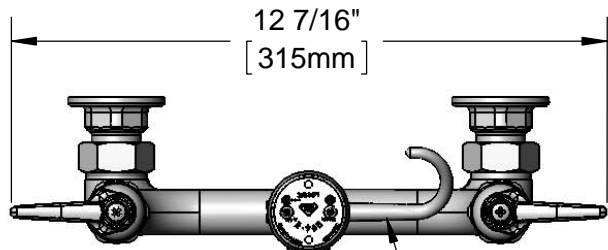
Job Name _____ Date _____

Model Specified _____ Quantity _____

Customer/Wholesaler _____

Contractor _____

Architect/Engineer _____



12 7/16"
[315mm]



Finger Hook

Adapter

EB-0107-035
High Flow
Spray Valve w/
Angled Spray Face



2 15/16"
[75mm]

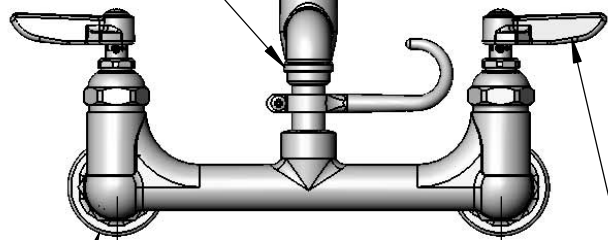
4 7/16"
[113mm]

3 1/4"
[82mm]

2 3/8"
[61mm]

Items Not Shown
For Clarity

B-0968
3/8" NPT
Vacuum Breaker



8"

[203mm]

Adjustable From
7 3/4" to 8 1/4"
[197mm to 210mm]

Ø 2" [51mm]
Flanges w/
1/2" NPT
Female Inlets

Eterna Cartridges w/
Spring Checks &
Lever Handles w/
Color Coded Indexes



68" Stainless Steel
Flex Hose w/ Blue
Handle

Product Specifications:

8" Wall Mount Mixing Faucet, Eterna Cartridges w/ Spring Checks, B-0968 Vacuum Breaker, High Flow Angled Blue Spray Valve w/ 68" Stainless Steel Flex Hose & 1/2" NPT Female Inlet

Drawn

DHL

Checked

DMH

Approved

JHB

Scale:

1:4

Date:

08/29/12



T&S BRASS AND BRONZE WORKS, INC.

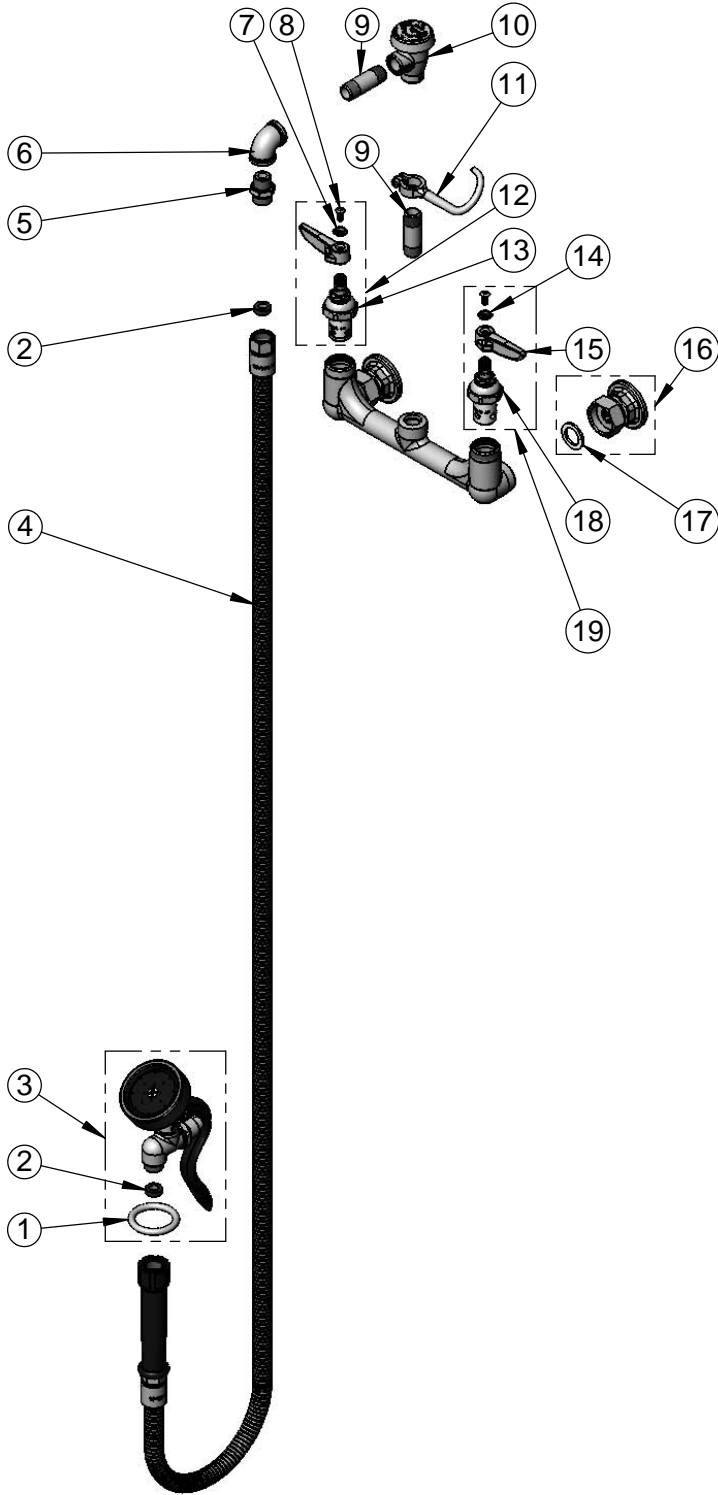
2 Saddleback Cove / P.O. Box 1088
Travelers Rest, SC 29690

Model No.

B-0167

Item No.

Travelers Rest, SC: 800-476-4103 • Simi Valley, CA: 800-423-0150 • Fax: 864-834-3518 • www.tsbrass.com



ITEM NO.	SALES NO.	DESCRIPTION
1	000907-45	Spray Valve Hold Down Ring
2	010476-45	#27 Washer
3	EB-0107-035	Blue Spray Valve w/ Angled Spray Face, Hold Down Ring & Washer
4	EB-0068-H	68" Stainless Steel Flex Hose w/ Blue Handle
5	053A	Adapter, 3/8" NPT x 3/4"-14 UNS
6	001355-40	Elbow, 3/8 NPT
7	001661-45	Red Index-HW
8	000922-45	Lever Handle Screw
9	000357-40	2" Nipple, 3/8" NPT
10	B-0968	Vacuum Breaker Asm, 3/8"
11	004R	Finger Hook
12	002712-40	Eterna Cartridge, RTC w/ Spring Check, Lever Handle, Index & Screw
13	012443-40	Eterna Cartridge, RTC w/ Spring Check
14	001660-45	Blue Index-CW
15	001638-45	Lever Handle
16	00AA	Flange Assembly
17	001019-45	Coupling Nut Washer
18	012442-40	Eterna Cartridge, LTC w/ Spring Check
19	002711-40	Eterna Cartridge, LTC w/ Spring Check, Lever Handle, Index & Screw

Product Specifications:

8" Wall Mount Mixing Faucet, Eterna Cartridges w/ Spring Checks, B-0968 Vacuum Breaker, High Flow Angled Blue Spray Valve w/ 68" Stainless Steel Flex Hose & 1/2" NPT Female Inlet

Drawn

DHL

Checked

DMH

Approved

JHB

Scale:

NTS

Date:

08/29/12