



T&S BRASS AND BRONZE WORKS, INC.
 2 Saddleback Cove / P.O. Box 1088
 Travelers Rest, SC 29690

Model No.
B-0176

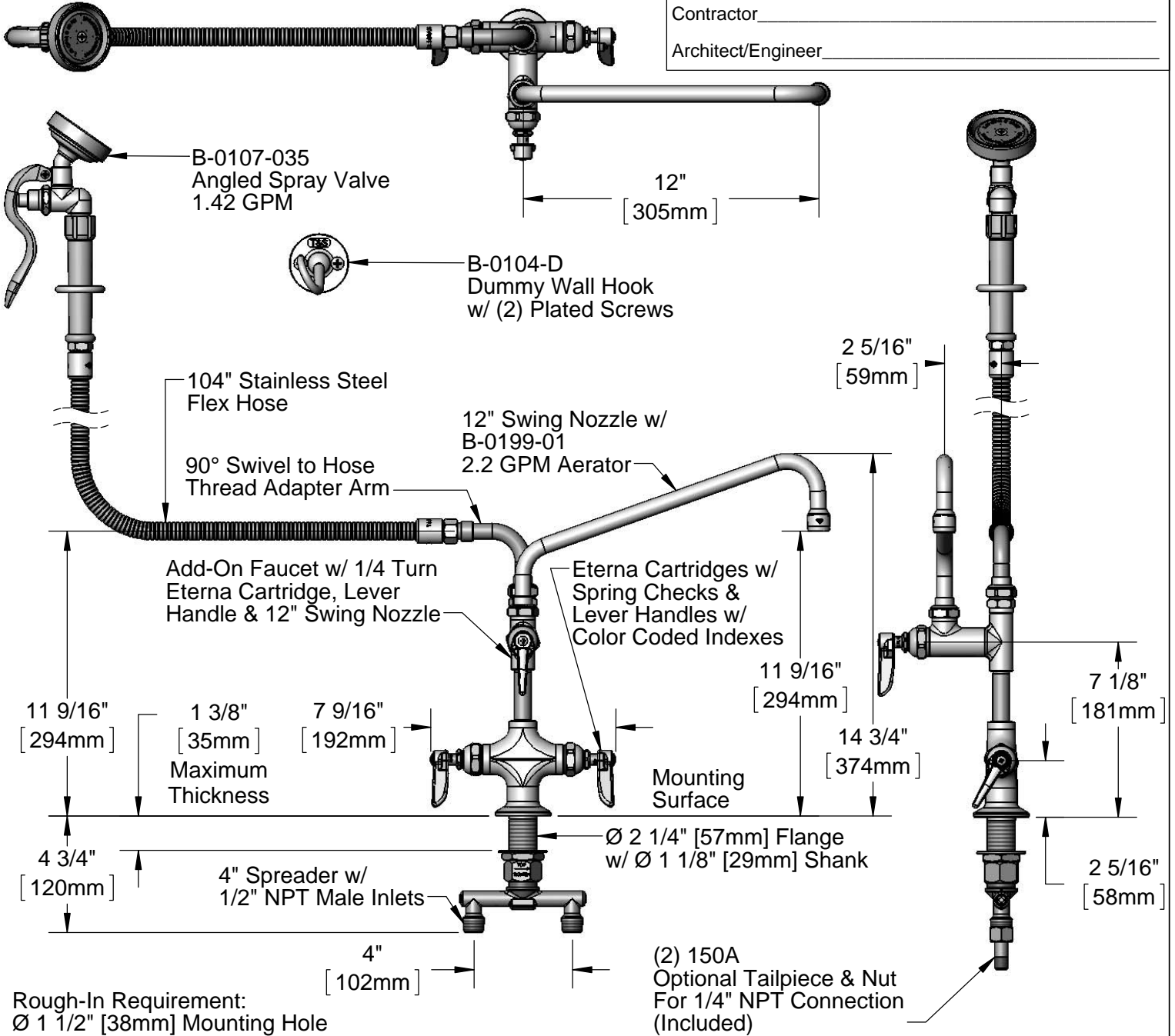
Item No.

Travelers Rest, SC: 800-476-4103 • Simi Valley, CA: 800-423-0150 • Fax: 864-834-3518 • www.tsbrass.com

EPAAct2005 Compliant

This Space for Architect/Engineer Approval

Job Name _____ Date _____
 Model Specified _____ Quantity _____
 Customer/Wholesaler _____
 Contractor _____
 Architect/Engineer _____



Product Specifications:

Single Hole Deck Mount Mixing Faucet, Eterna Cartridges w/ Spring Checks, Add-On Faucet w/ 12" Swing Nozzle & 2.2 GPM Aerator, 90° Swivel Adapter, 104" Stainless Steel Flex Hose, Angled 1.42 GPM Spray Valve, Dummy Wall Hook & 4" Spreader w/ 1/2" NPT Male Inlets

Drawn DHL	Checked DMH	Approved JHB
Scale: 1:6		Date: 11/02/12



T&S BRASS AND BRONZE WORKS, INC.

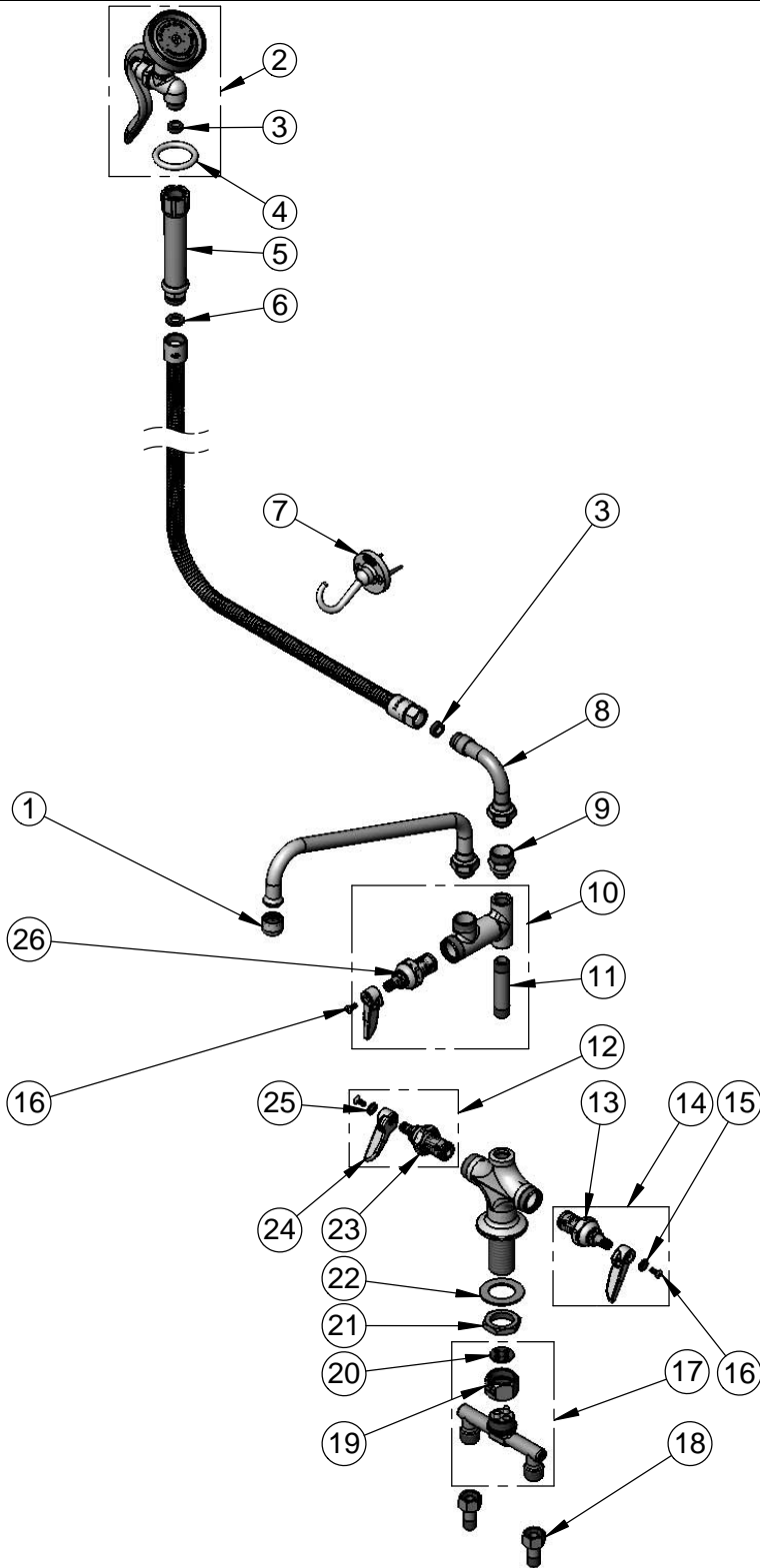
2 Saddleback Cove / P.O. Box 1088
Travelers Rest, SC 29690

Model No.

B-0176

Item No.

Travelers Rest, SC: 800-476-4103 • Simi Valley, CA: 800-423-0150 • Fax: 864-834-3518 • www.tsbrass.com



ITEM NO.	SALES NO.	DESCRIPTION
1	B-0199-01	2.2 GPM Aerator, Female
2	B-0107-035	Angled Spray Valve 1.42 GPM
3	010476-45	#27 Washer
4	000907-45	Spray Valve Hold Down Ring
5	002987-40	Gray Grip Handle
6	001014-45	Washer, B-0100 Hose Barrel
7	B-0104-D	Dummy Wall Hook
8	034A	Swivel Adapter Arm
9	B-0412	Rigid to Swivel Adapter
10	B-0155-LN	Add-On Faucet w/ Lever Handle, Less Nozzle
11	000358-40	Nipple, 3/8" NPT x 3"
12	002712-40	Eterna Cartridge, RTC w/ Spring Check, Lever Handle, Index & Screw
13	012442-40	Eterna Cartridge, LTC w/ Spring Check
14	002711-40	Eterna Cartridge, LTC w/ Spring Check, Lever Handle, Index & Screw
15	001660-45	Blue Index-CW
16	000922-45	Lever Handle Screw
17	002898-40	4" Spreader Unit
18	150A	Bag of (1) Tailpiece & (1) Nut
19	000736-20	Spreader Coupler Nut
20	001041-45	Spreader Washer
21	000965-45	Lock Nut
22	002290-45	Lock Washer
23	012443-40	Eterna Cartridge, RTC w/ Spring Check
24	001638-45	Lever Handle
25	001661-45	Red Index-HW
26	007947-40	1/4 Turn Eterna Cartridge, RTC

Product Specifications:

Single Hole Deck Mount Mixing Faucet, Eterna Cartridges w/ Spring Checks, Add-On Faucet w/ 12" Swing Nozzle & 2.2 GPM Aerator, 90° Swivel Adapter, 104" Stainless Steel Flex Hose, Angled 1.42 GPM Spray Valve, Dummy Wall Hook & 4" Spreader w/ 1/2" NPT Male Inlets

Drawn	Checked	Approved
DHL	DMH	JHB
Scale:		Date:
NTS		11/02/12