



T&S BRASS AND BRONZE WORKS, INC.

2 Saddleback Cove / P.O. Box 1088
Travelers Rest, SC 29690

Model No.

B-1146-02A

Item No.

Travelers Rest, SC: 800-476-4103 • Simi Valley, CA: 800-423-0150 • Fax: 864-834-3518 • www.tsbrass.com

This Space for Architect/Engineer Approval

Job Name _____ Date _____

Model Specified _____ Quantity _____

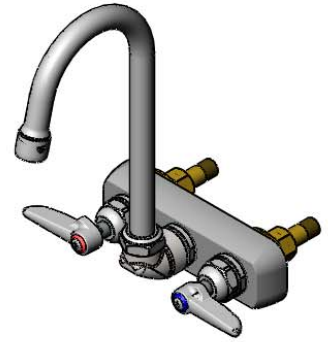
Customer/Wholesaler _____

Contractor _____

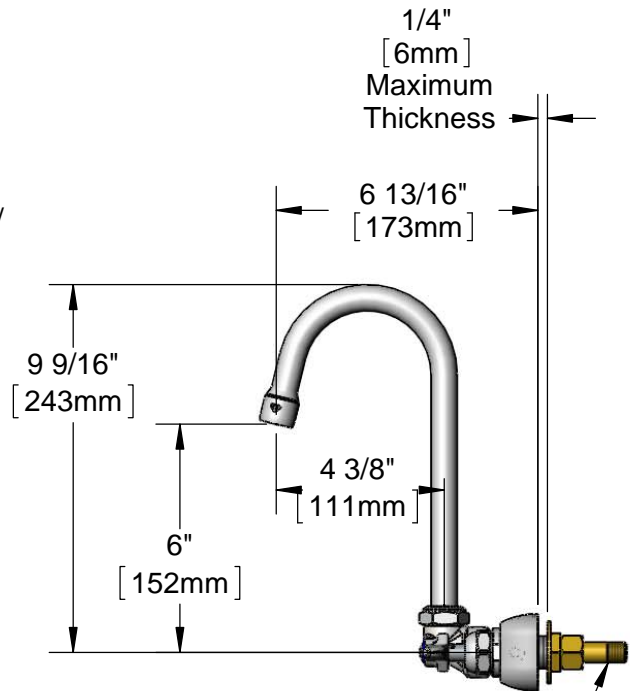
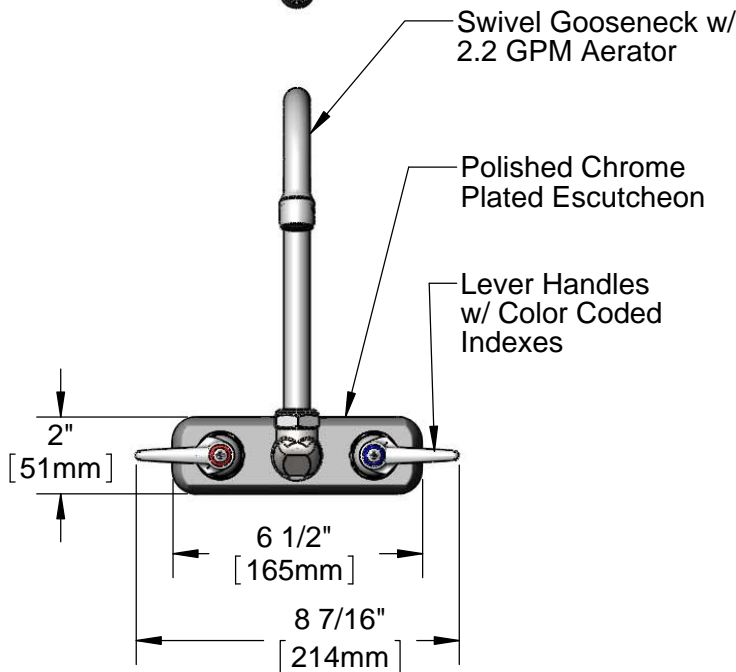
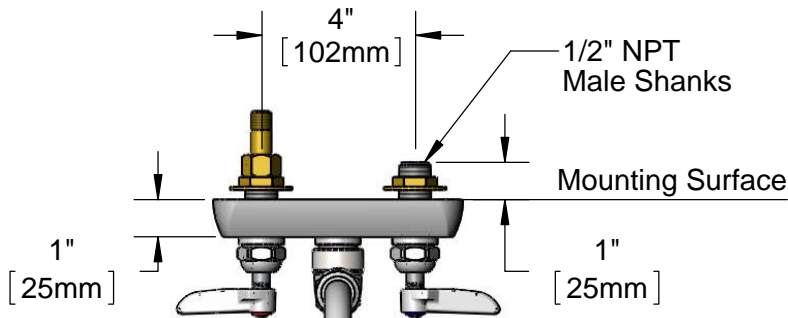
Architect/Engineer _____



ADA Compliant



B-1100-K
Elbow Kit w/
(2) 1/2" NPT Male
90° Elbows
(Sold Separately)



(2) 150A
Optional Tailpiece and
Nut for 1/4" NPT
Connection (Included)

Rough-In Requirement:
(2) ϕ 1" [25mm] Mounting Holes

Product Specifications:

4" Wall Mount Workboard Faucet w/ Lever Handles, Swivel Gooseneck w/ 2.2 GPM Aerator & 1/2" NPT Male Shanks

Drawn

KJG

Checked

JRM

Approved

JHB

Scale:

1:5

Date:

08/27/12



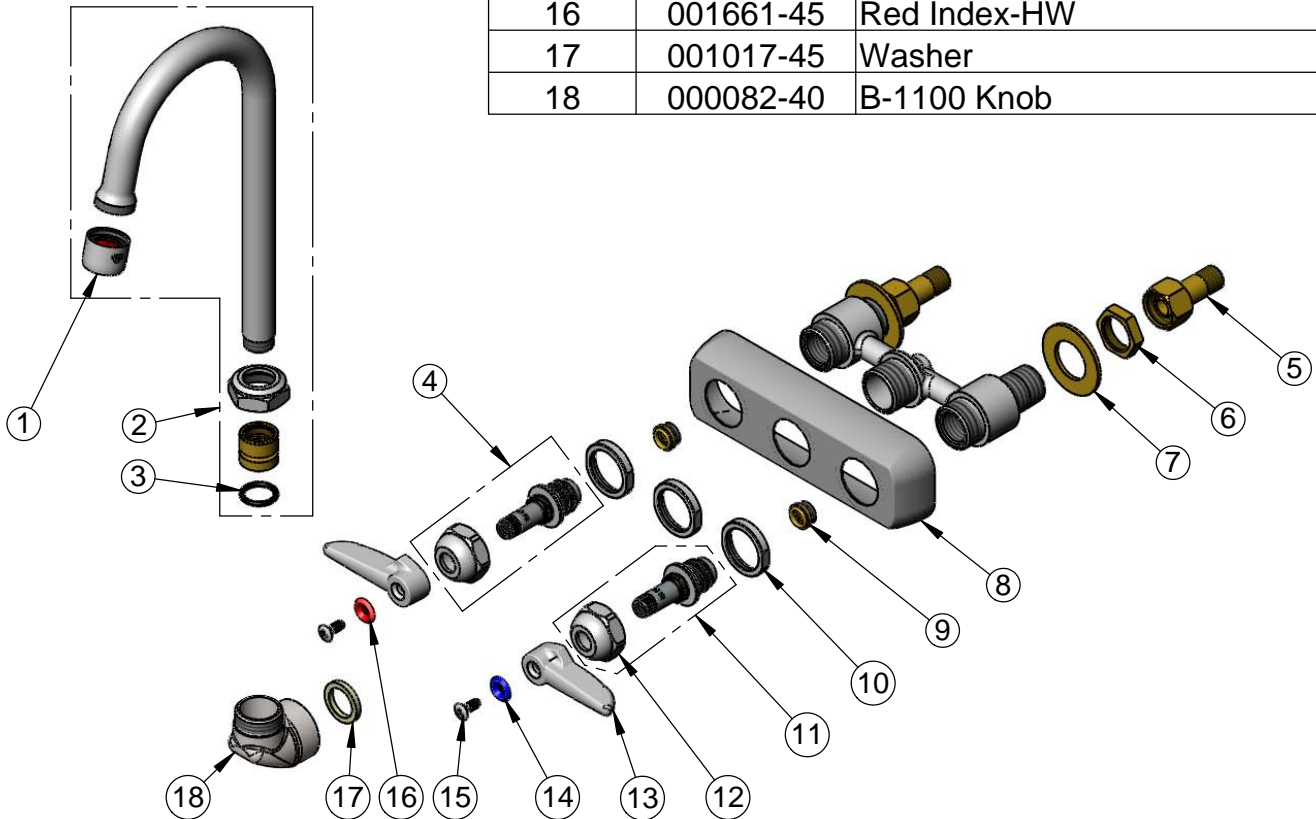
T&S BRASS AND BRONZE WORKS, INC.
 2 Saddleback Cove / P.O. Box 1088
 Travelers Rest, SC 29690

Model No.
B-1146-02A

Item No.

Travelers Rest, SC: 800-476-4103 • Simi Valley, CA: 800-423-0150 • Fax: 864-834-3518 • www.tsbrass.com

ITEM NO.	SALES NO.	DESCRIPTION
1	B-0199-01	2.2 GPM Aerator
2	017907-40	Swivel Gooseneck Assembly
3	001074-45	O-Ring
4	009754-25	B-1100 Spindle Assembly, LTC
5	150A	1/4" NPT Tailpiece & Nut
6	002954-45	Shank Lock Nut
7	000999-45	Brass Lock Washer
8	001258-40	Escutcheon
9	000763-20	Seat
10	000712-25	Escutcheon Lock Nut
11	009753-25	B-1100 Spindle Assembly, RTC
12	009749-25	Bonnet Nut
13	001638-45	Lever Handle
14	001660-45	Blue Index-CW
15	000922-45	Lever Handle Screw
16	001661-45	Red Index-HW
17	001017-45	Washer
18	000082-40	B-1100 Knob



Product Specifications:

4" Wall Mount Workboard Faucet w/ Lever Handles, Swivel Gooseneck w/ 2.2 GPM Aerator & 1/2" NPT Male Shanks

Drawn

KJG

Checked

JRM

Approved

JHB

Scale:

NTS

Date:

08/27/12