



T&S BRASS AND BRONZE WORKS, INC.

2 Saddleback Cove / P.O. Box 1088
Travelers Rest, SC 29690



REG. #A2601
ISO #9001

Model No.

B-1458

Item No.

Travelers Rest, SC: 800-476-4103 • Simi Valley, CA: 800-423-0150 • Fax: 864-834-3518 • www.tsbrass.com

This Space for Architect/Engineer Approval

Job Name _____ Date _____

Model Specified _____ Quantity _____

Customer/Wholesaler _____

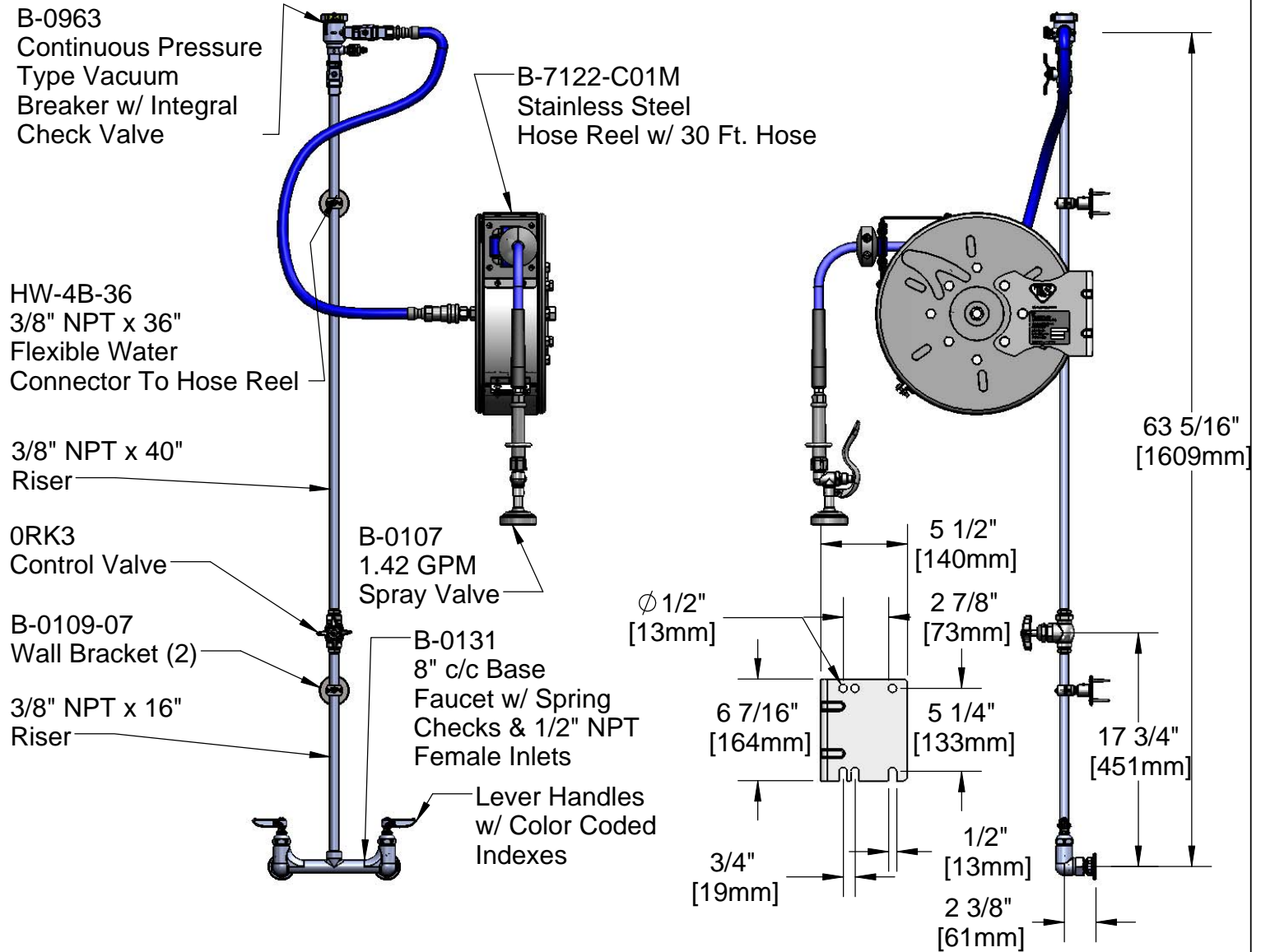
Contractor _____

Architect/Engineer _____

EPAct2005 Compliant



B-CVH1-2
(2) Check Valves
Included



Product Specifications:
Stainless Steel Enclosed Hose Reel w/ 30 Ft Hose,
B-0107, Vac Breaker, Check Valves, 3/8" NPT Flex
Connector Asm, 8" c/c Wall Mount Faucet, & Control Valve in Riser

Drawn JRM	Checked DHL	Approved JHB
Scale: 1:12		Date: 03/22/11



T&S BRASS AND BRONZE WORKS, INC.

2 Saddleback Cove / P.O. Box 1088
Travelers Rest, SC 29690



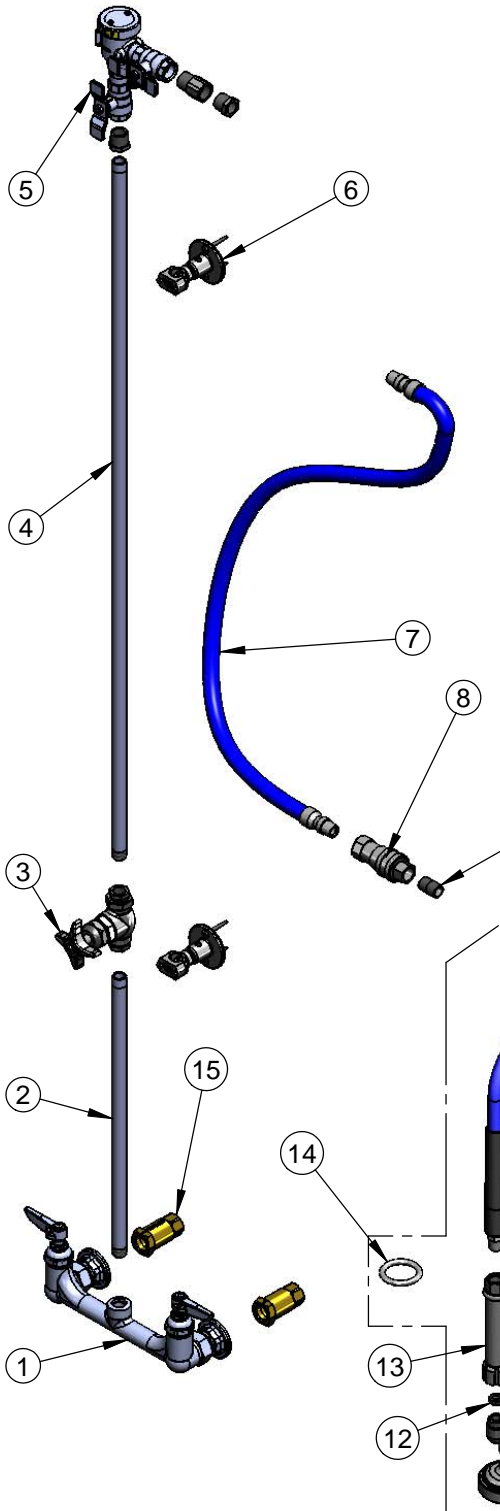
REG. #A2601
ISO #9001

Model No.

B-1458

Item No.

Travelers Rest, SC: 800-476-4103 • Simi Valley, CA: 800-423-0150 • Fax: 864-834-3518 • www.tsbrass.com



ITEM NO.	SALES NO.	DESCRIPTION
1	002832-40	B-131 Base Faucet
2	000368-40	Nipple, 3/8" x 16"
3	0RK3	Valve Control
4	002558-40	3/8" NPT x 40" Riser
5	B-0963	B-0963 VB
6	B-0109-07	Wall Bracket
7	HW-2B-36	3/8" NPT x 36" Flex Water Hose
8	AW-5B	3/8" NPT Quick Connect
9	002535-25	3/8" Close Nipple
10	B-7122-C01M	Enclosed SS Reel w/ 30' of 3/8" Hose w/ B-0107 Spray Valve & Handle
11	B-0107	B-0107 Spray Valve w/ Hold Down Ring & Washer
12	010476-45	#27 Washer
13	002881-40	3/8" NPT Gray Handle Assembly
12	000907-45	Hold Down Ring
15	B-CVH1-2	1/2" Check Valve

Product Specifications:
Stainless Steel Enclosed Hose Reel w/ 30 Ft Hose,
B-0107, Vac Breaker, Check Valves, 3/8" NPT Flex
Connector Asm, 8" c/c Wall Mount Faucet, & Control Valve in Riser

Drawn JRM	Checked DHL	Approved JHB
Scale: NTS		Date: 03/22/11