



Profit from the Eagle Advantage®

Specification Sheet

Short Form Specifications

Eagle Handwashing System, model _____. Constructed of type 304 stainless steel with deep-drawn positive drain sink bowl, basket drain, inverted "V" edge to prevent spillage, removable stainless steel trash container, and MICROGARD® antimicrobial protection. T&S electronic-eye faucet with hydro-generator power source, hard roll paper towel dispenser, hands-free hand sanitizer dispenser, hands-free soap dispenser, glove rack and white bristle nail brush. Other systems available feature hand sink with skirt only (no waste receptacle) or hand sink with end splashes.



#HFL-5000 with towel dispenser, soap dispenser, hand sanitizing dispenser and glove rack

Item No.:	_____
Project No.:	_____
S.I.S. No.:	_____

HFL-5000 Series Touch-Free Handwashing Systems

MODELS:

- HFL-5000
- HFL-5000-S
- HFL-5000-LRS

HFL-5000 Components:

- **Eagle** hand sink with MICROGARD® antimicrobial protection. Includes basket drain with 1½" connection.
- **Kimberly-Clark** hard roll towel dispenser, with SaniTouch® mechanical touchless technology for one-at-a-time dispensing. No batteries or AC power supply required. Eagle part #377454. Use Kleenex #50606 or Scott #02000 towel roll.
- **T&S*** electronic-eye faucet, splash mounted with battery-saving hydro-generator power source*. A LEED-friendly combination with the flow of water creating its own power source. Eagle part #369865.
- **Purell/LTX**** hand sanitizing dispenser. Four "D" batteries** included. Eagle part #377455.
- **Gojo/LTX**** hand soap dispenser. Four "D" batteries** included. Eagle part #377456.
- **FoodHandler** glove rack for single service gloves. Model #11-0012. Eagle part #352855.
- **Tucel** soft bristle white nail brush. Model #1832. Eagle part #348602.

* Faucet comes with AC-DC control module. First time used, faucet will draw power from AC adaptor or four "AA" batteries. Afterwards, it will draw primarily from the hydro-generator. The AC or DC power, while still connected, will serve as backup power, should the hydro-generator ever malfunction for any unlikely reason.

** Because these dispensers require so little power, battery changes are eliminated in most applications.

EAGLE GROUP

100 Industrial Boulevard, Clayton, DE 19938-8903 USA

Phone: 302-653-3000 • Fax: 302-653-2065

www.eaglegrp.com

Foodservice Division: Phone 800-441-8440

MHC/Retail Display Divisions: Phone 800-637-5100

For custom configuration or fabrication needs, contact our SpecFAB® Division.

Phone: 302-653-3000 • Fax: 302-653-2065 • e-mail: quotes@eaglegrp.com

Certifications / Approvals



(for Eagle hand sink)

AUTOQUOTES



EG20.55 Rev. 02/16

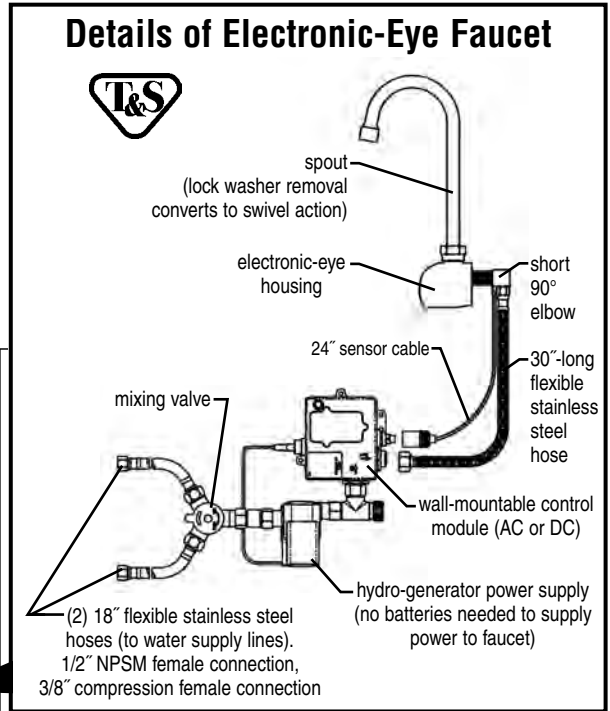
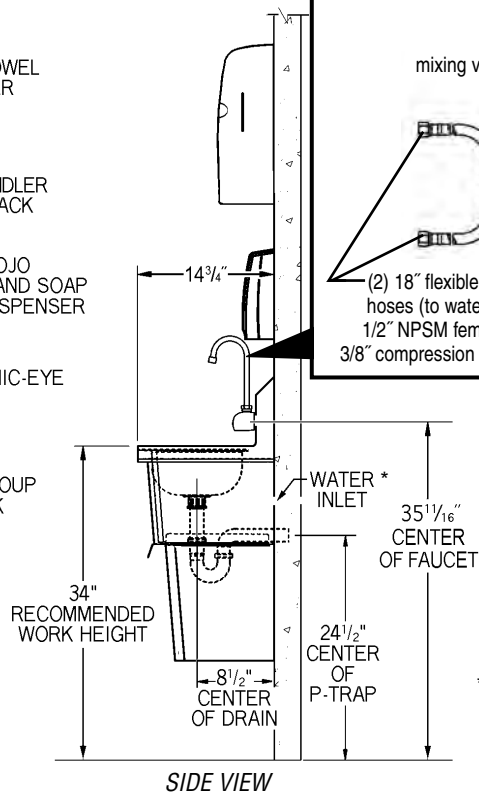
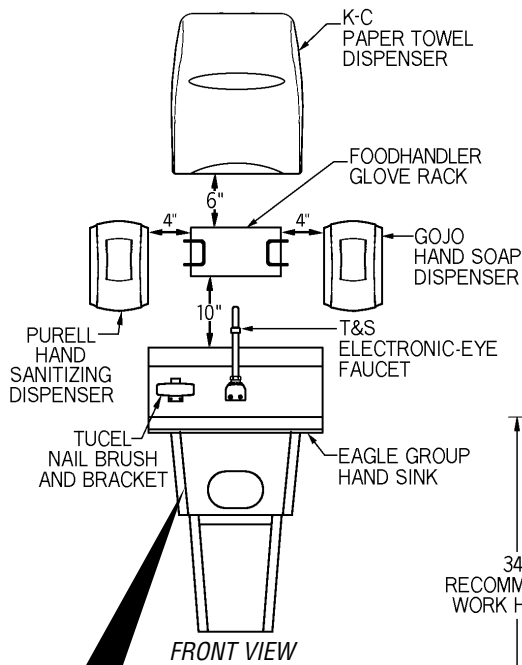
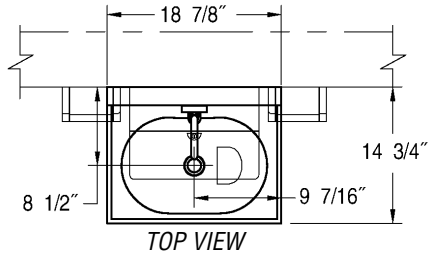
Spec sheets available for viewing, printing or downloading from our online literature library at www.eaglegrp.com

Eagle Foodservice Equipment, Eagle MHC, SpecFAB®, and Retail Display are divisions of Eagle Group. ©2016 by the Eagle Group



Item No.: _____
 Project No.: _____
 S.I.S. No.: _____

HFL-5000 Series Touch-Free Handwashing Systems



model #	description of hand sink included
HFL-5000	hand sink with waste receptacle
HFL-5000-S	hand sink with skirt (no waste receptacle)
HFL-5000-LRS	hand sink with waste receptacle and end splashes

NOTE: All hand sinks in HFL-5000 Series feature MICROGARD® antimicrobial protection.

EAGLE GROUP
 100 Industrial Boulevard, Clayton, DE 19938-8903 USA
 Phone: 302-653-3000 • Fax: 302-653-2065
 www.eaglegrp.com

Foodservice Division: Phone 800-441-8440
 MHC/Retail Display Divisions: Phone 800-637-5100

Printed in U.S.A.
 ©2016 by Eagle Group
 Rev. 02/16

Spec sheets available for viewing, printing or downloading from our online literature library at www.eaglegrp.com

Although every attempt has been made to ensure the accuracy of the information provided, we cannot be held responsible for typographical or printing errors. Information and specifications are subject to change without notice. Please confirm at time of order.