

Slide Top Bottle Coolers

FBC Series

- FBC-50
- FBC-65
- FBC-79
- FBC-95
- FBC-59S
- FBC-65S
- FBC-79S
- FBC-95S



Item # _____

Standard Features

- Our slide top units are designed with durability and strength along with feature rich standards uncommon in the industry today.
- Refrigeration system is a free flowing air system throughout the box to ensure "ICE COLD" products at all times.
- Heavy duty 18 gauge stainless steel top with anodized aluminum bottle rails.
- Stylish wear resistant black vinyl on steel finish front, sides and back. (S) Models have stainless steel front and sides.
- Standard with incandescent interior lighting to provide full visibility to your bottle and door locks to protect your inventory.
- Heavy duty adjustable bin dividers, epoxy coated.
- Units come with compressor mounted on the right side with service friendly slide out rail system. Drain is located in the back compressor housing.
- (1) Cap catcher - Standard.



FBC-50



FBC-65



FBC-95S

Options & Accessories

- Additional dividers
- 220 volts / 50 cycles / 1 phase



*Conforms to UL & NSF-7 standards

Bottle Cooler	Model	Lids	12 Oz. Cans	12 Oz. Bottles	HP	Amps	Cord Length	Cabinet Dimensions			Shipping (Wt. Cubes)	
								W	D*	H		
	FBC-50(S)	2	864	456	1/4	5.9	8'	50-1/2" (1279 mm)	26-1/2" (673.1 mm)	33-3/8" (838 mm)	260 (117.9 kg)	37 (1.05 m ³)
	FBC-65(S)	2	804	624	1/3	6.2	8'	65-1/2" (1665 mm)	26-1/2" (673.1 mm)	33-3/8" (838 mm)	310 (140.6 kg)	50.5 (1.43 m ³)
	FBC-79(S)	3	1092	804	1/3	6.2	8'	80" (2033 mm)	26-1/2" (673.1 mm)	33-3/8" (838 mm)	390	57
	FBC-95(S)	3	1368	1008	1/2	6.5	8'	95" (2413 mm)	26-1/2" (673.1 mm)	33-3/8" (838 mm)	508 (230.4 kg)	69 (1.95 m ³)

*Depth does not include 1" bumper

Specifications FBC Series

Construction

Heavy duty stainless steel top, 18 gauge. Black vinyl front, sides and back. (S) Models have stainless steel front, sides and back. Interior constructed of heavy duty galvanized steel walls with coved corner galvanized floor.

Lids are heavy duty foamed in place with stainless steel finish. Lids are provided with locks per lid. Unit comes complete with a 1-1/2" CFC-Free polyurethane insulation, foamed in place.

Refrigeration System

Self-contained capillary tube system using environmentally friendly (CFC Free) R-134a

refrigerant. Front breathing compressor on right side for built-in applications. Evaporator coil is mounted to interior back panel. Large fan motor and fan blades for greater air flow. Automatic condensate evaporator, drain connection required.

Evaporator condensate has been plumbed to a condensate pan located in the compressor housing. Access for the condensing unit behind the front grill, slides out for easy cleaning and maintenance. Cabinets are designed to maintain temperatures between 28° F to 38° F in the interior cabinet.

Lights

Interior fluorescent light.

Shelving

Adjustable epoxy coated bin dividers provided per unit

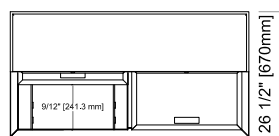
Others

Unit is supplied standard with an 8' cord and plug (Nema 5-15p).

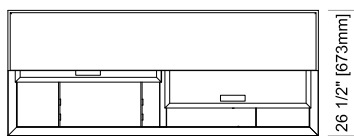
Warranty

3 year parts and labor warranty plus 2 additional year compressor warranty. (Continental U.S.A. & Canada only).

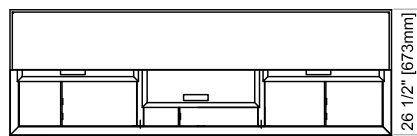
FBC



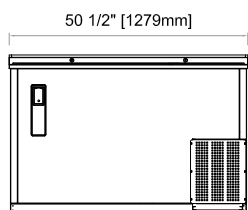
FBC - 50
Top View



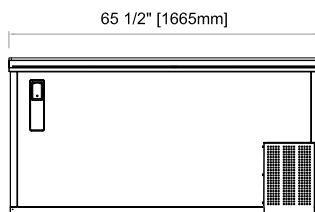
FBC - 65
Top View



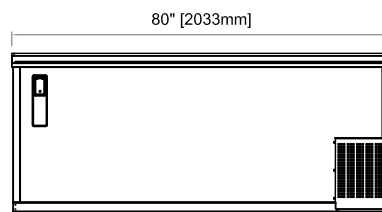
FBC - 79
Top View



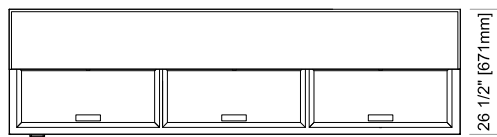
FBC - 50
Front View



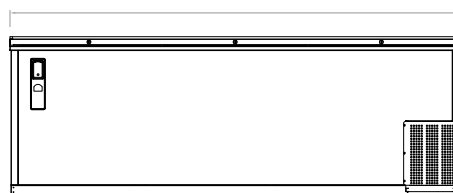
FBC - 65
Front View



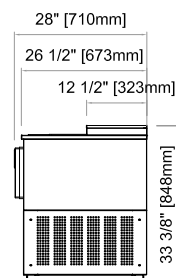
FBC - 79
Top View



FBC - 95
Top View



FBC - 95
Front View



FBC
Common View

The manufacturer reserves the rights to modify materials and specifications without notice.

