

Refrigerated Countertop Rail

CPR Series

• CPR-4

• CPR-8

• CPR-60-4



Item # _____

Standard Features

- Our "CPR" series counter top display is designed for durability and strength that you will not find in any other products in its class.
- All stainless steel interior and exterior construction for a clean and safe food environment. Coved corner floor to meet NSF requirements.
- Elegant top surface with mirror stainless steel finish and full color display.
- Refrigeration is designed to maintain 33° to 41°F in the pans at all times.
- Digital temperature controller with automatic defrost and temperature display to keep food quality for a longer period of time.
- Static refrigeration system to keep pans at NSF required temperatures.
- High density CFC-free polyurethane insulation and balanced CFC-free refrigeration system, R-134A.
- Units come standard with clear poly carbonate 1/6 size pans. CPR-60-4 comes with (4) 4" deep pans, with lid for serving utensil. CPR-8 come with (8) 6" deep pans and CPR-4 with (4) 6" deep pans.
- Mounted on 4 non adjustable rubber legs.



CPR-4



CPR-8



CPR-60-4



*Conforms to UL & NSF-7 standards

Model	Pans	Volts	Amps	HP	Crated Weight (lbs)	Cabinet Dimensions		
						W	D	H
Tapas Cases								
CPR-4	4	115	3	1/6	135	15-3/4"	26-1/4"	11 1/4"
CPR-8	8	115	3	1/6	168	28-1/8"	26-1/4"	11-1/4"
CPR-60-4	4	115	2.3	1/4	112	28-1/8"	16"	11"
CPR-4 only options	Description							
-4L	Fixed plexiglass hinged lid system for (4) 1/6th size pans. (Pans included with unit)							
-5L	Fixed plexiglass hinged lid system for (2) 1/6th pans / (3) 1/9th pans. (Pans included)							
-6L	Fixed plexiglass hinged lid system for (6) 1/9th pans. (Pans included)							
Togo-8	8 section "To-go" condiment packet station. Stainless steel with black acrylic.							
Base-2	Step up high volume pump station in stainless steel and black acrylic							

** All specifications are subject to change without notice

* Does not include 1" for bumper

** Does not include 1" for legs

Refrigerated Countertop Rail



Specifications CPR Series

Construction

Heavy duty stainless steel exterior front, sides and back. Interior completely constructed of heavy duty stainless steel with covered cornered floor. Unit comes complete with a 2" CFC-Free polyurethane insulation, foamed in place.

Refrigeration System

Self-contained capillary tube system using environmentally friendly (CFC Free) refrigerant. (R-134a) Bottom mount condensing unit and static cold wall coils are located on the bottom.

Refrigerator is designed to maintain temperatures between 33° F to 41° F during normal operations at an ambient temperature of 85° F.

Energy savings digital controllers and thermostats. Automatic defrost, time initiated.

Pans

CPR-60-4 includes (4) clear poly carbonate 1/6 size pans, 4" deep, with lid for serving utensil.

CPR-4 comes with (4) clear poly carbonate 1/6 size pans, 6" deep.

CPR-8 comes with (8) clear poly carbonate 1/6 size pans, 6" deep.

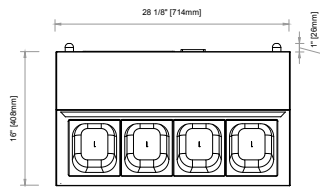
Others

Unit is supplied standard with a 8' cord and plug (Nema 5-15p). Standard with non adjustable feet.

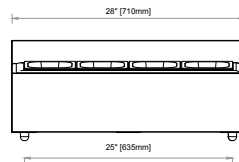
Warranty

3 year parts and labor warranty plus 2 additional year compressor warranty. (Continental U.S.A. & Canada only).

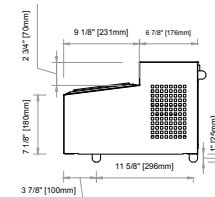
CPR-60-4
Top View



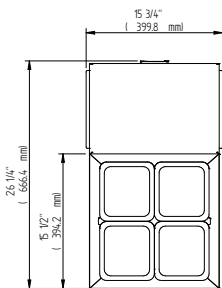
CPR-60-4
Front View



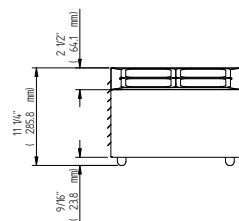
CPR-60-4
Side View



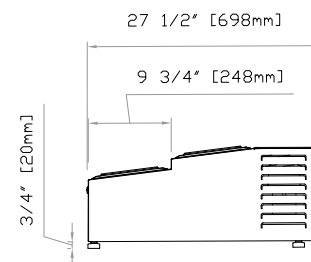
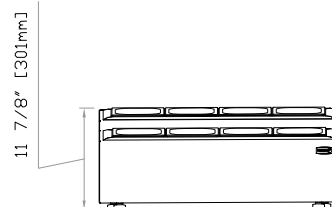
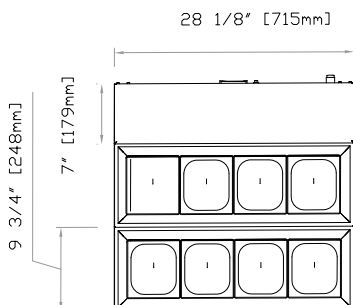
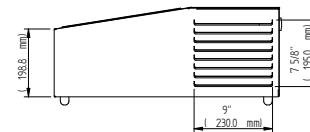
CPR-4
Top View



CPR-4
Front View



CPR-4
Side View



The manufacturer reserves the rights to modify materials and specifications without notice.