

Project: _____	AIA# _____
Item #: _____ Qty: _____	SIS# _____
Model #: _____	

Blender Stations

BSA-12, BSA-14, BSA-18L, BSA-18R,
BSB-12, BSB-14, BSB-18



BSB-18
(Blender not included)



Intertek
4004503
Conforms to ANSI/NSF STD 2
Certified to CSA/CAN STD B45.4

Standard Features

- All stainless steel construction
- One-piece, seamless top and backsplash
- CFC free foamed-in-place blender shelf for sound deadening
- Adjustable stainless steel bullet feet
- 9-1/4" by 11-1/2" by 6" deep sink bowl with hot and cold water gooseneck faucet
- Lift-out plastic perforated sink strainer
- 1" recessed work surface on 'BSB-__' models
- Blender shelf features radius interior corners for easy cleaning
- Power cord access hole with grommet located on front skirt, behind the blender
- Junction box for duplex GFI outlet mounted underneath blender shelf (outlet not included)

NOTE: Blender stations cannot have a speed rail mounted to them. Since speed rails are so common on underbar, blender stations come in 24" and 29" depths to align with underbar that has a speed rail.

★ **All faucets are NSF/ANSI 61, Annex G low lead compliant**

To view underbar installation instructions, please visit: http://www.glastender.com/PDF/F-750-165_Underbar_Installation_Instructions.pdf
 To view cleaning and care instructions, please visit: http://www.glastender.com/PDF/F-423-011_ss_clean_care.pdf

Specifications

- Drain**
- 1-1/2" I.P.S. Threaded drain will fit Dearborn part #8033 slipnut and part #W-573P washer.
- Faucet**
- Deck mounted on 4" centers, accepts 3/8" sink leads, hot and cold water connections required (except models BSA-12 and BSB-12)
 - Models BSA-12, BSB-12: Backsplash mounted on 4" centers, hot and cold water connections required
- Sink Bowl Dimensions**
- 9-1/4" by 11-1/2" by 6" deep
- Sink Strainer**
- Perforated plastic
- Legs**
- 1-5/8" diameter, 16 gauge stainless steel
 - Stainless steel bullet feet
- Materials**
- 20 gauge stainless steel



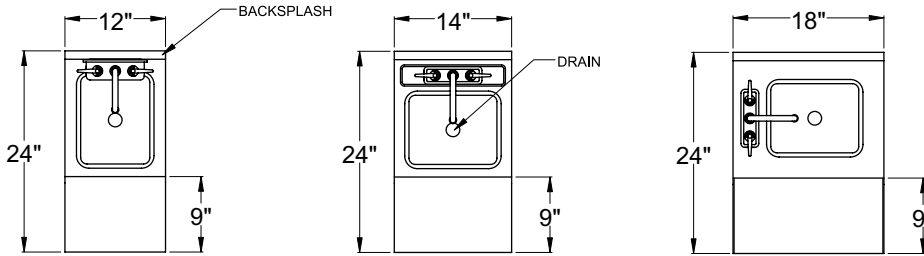
Power cord access hole in front skirt, behind blender

Glastender, Inc. • 5400 North Michigan Road • Saginaw, MI • 48604-9780 989.752.4275 • 800.748.0423 • Fax 989.752.4444 www.glastender.com	Approval/Notes:
Specifications subject to change without notice. For current specifications please visit our website.	

Blender Stations

Dimensional Information

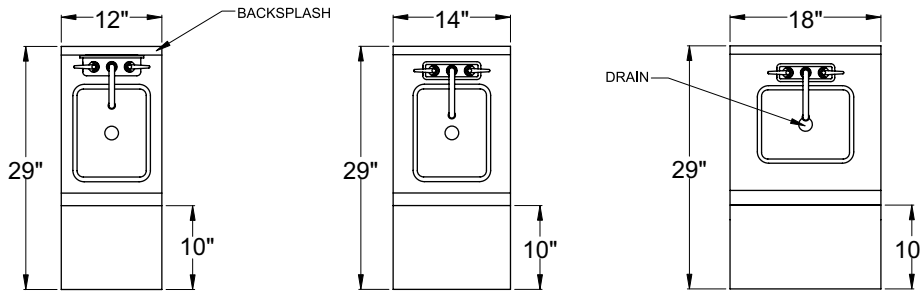
*NOTE: The BSA-18L model has the faucet mounted Left. Specify BSA-18R for faucet mounted Right.



BSA-12

BSA-14

BSA-18L

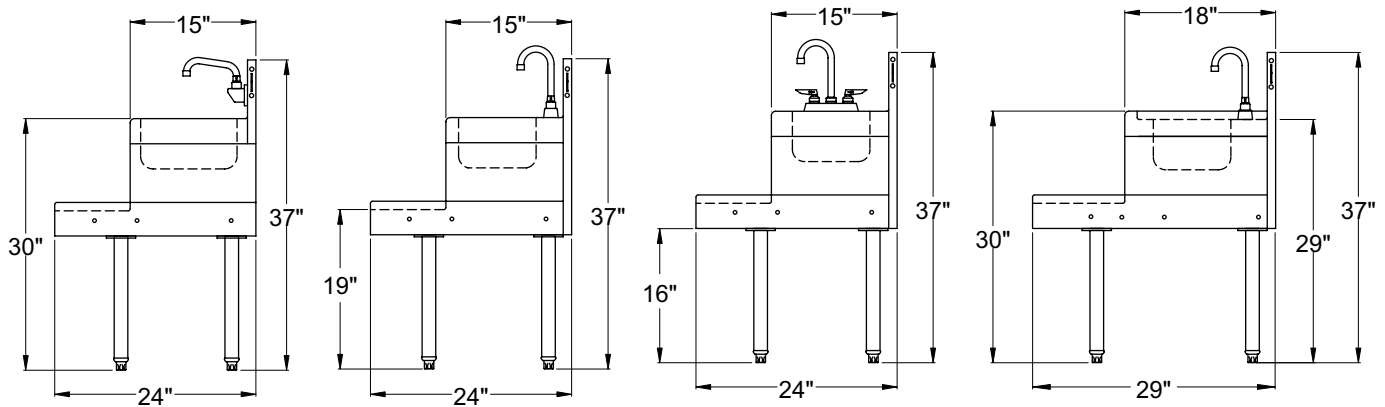


BSB-12

BSB-14

BSB-18

PLAN VIEWS



BSA-12

BSA-14

BSA-18L

BSB-12*, BSB-14, BSB-18

*Note: BSB-12 faucet is mounted to backsplash.

SIDE ELEVATIONS



5400 N Michigan Rd • Saginaw, MI • 48604-9780
 989.752.4275 • 800.748.0423 • Fax 989.752.4444
 www.glastender.com

Printed in USA