

Product Specification Sheet

SC-OD42I-5-B • SC-OD42I-7-B

Island Case

Features

- 3 Levels of Stainless Steel Shelving
- Shelves are Adjustable in 1" Increments
- LED Lighting Around the Top
- Electronically Controlled Refrigeration System
- Removable Deck Pans for Easy Access
- 404A Refrigerant
- Black Interior
- Black Exterior
- Black Laminated Top & Base
- Heavy Duty Condensing Unit
- All Steel Construction
- Foamed in Place with CFC Free Foam
- Electric Condensate Pan, Separate Plug
- Heavy Duty Plexiglas Front Rail
- Built in Product Stops at Deck Area
- Four Removable Bottom Panels for Easy Access
- Even Flo Air Discharge for Balanced Temperatures

Options

- Choice of Color on Interior - White or Stainless Steel
- Choice of Exterior Color
- Choice of Laminate Color on Top & Base
- LED Lit Shelves
- LED Lit Under Carriage Area
- Night Cover
- Price Tag Molding
- Remote Refrigeration
- Top Access Raceway (Electrical & refrigeration connections)



Dimensions and Technical Data

SC-OD42I-5

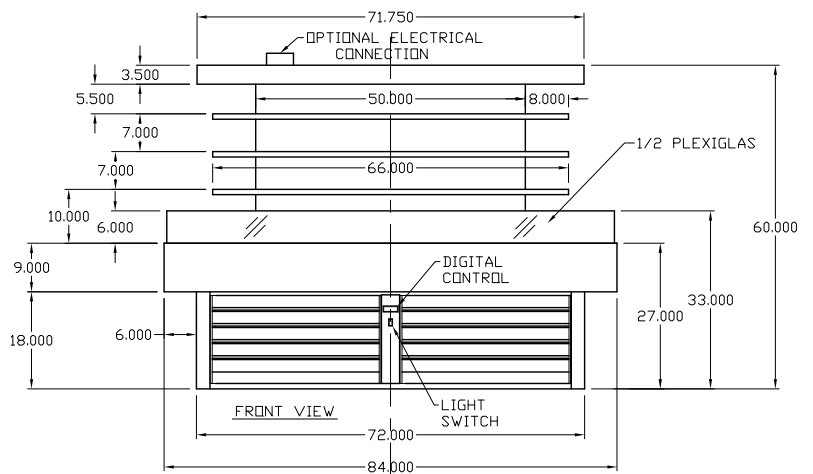
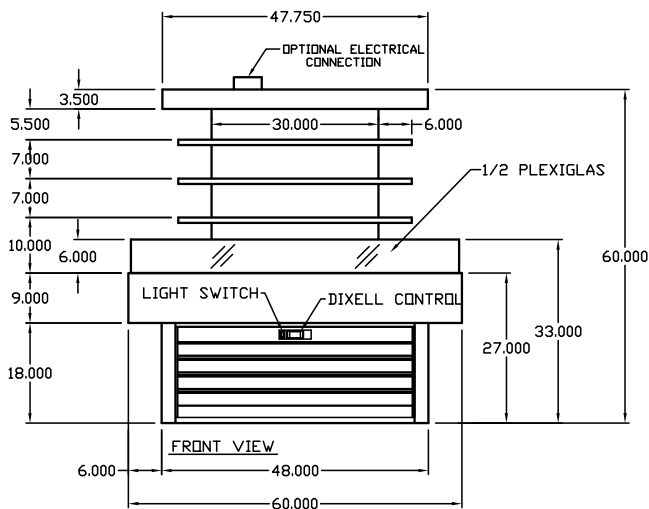
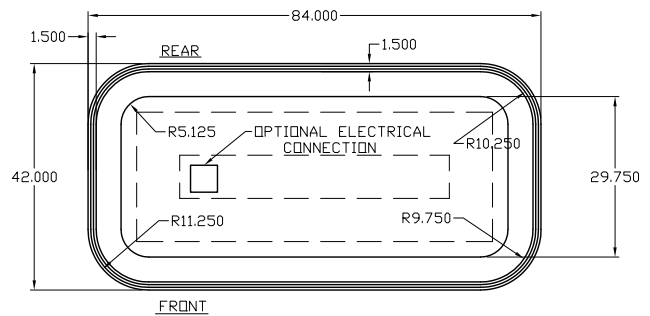
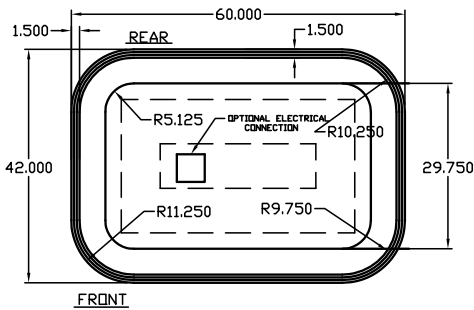
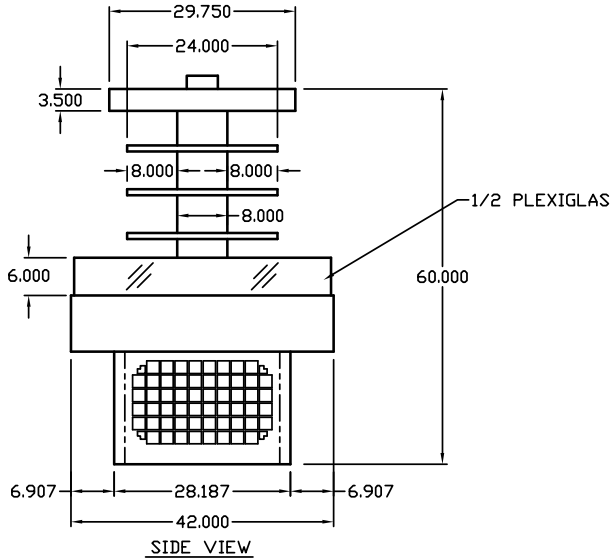
Length	60"
Width	42"
Height (to display area)	27"
Height (to top of tower)	60"
HP	1-1/2 HP
Refrigerant	404A
Volts	115/208-230
Volts Remote	115/208-230
Amps	15
Amps Remote	7
BTUs	11,200
Plug	NEMA L14-20P
Plug Remote	Hardwire
Condensate Pan Amps	208-230V, 6.25A

SC-OD42I-7

Length	84"
Width	42"
Height (to display area)	27"
Height (to top of tower)	60"
HP	1-3/4 HP
Refrigerant	404A
Volts	115/208-230
Volts Remote	115/208-230
Amps	16
Amps Remote	8
BTUs	13,200
Plug	NEMA L14-20P
Plug Remote	Hardwire
Condensate Pan Amps	208-230V, 6.25A



Technical Data • Side View • Plan View



SC-OD42I-5-B

SC-OD42I-7-B