

Product Specifications Sheets



Model No.	Description	Length	Depth	Height	Voltage	Amps	HP/BTUs	Power Cord	Est. Ship Weight
SC-CDS35-4	Self Contained	50"	37.5"	52"	115	6.0	1/4	NO	500
SC-CDS35-6	Self Contained	71"	35.5"	52"	115	8.7	1/3	NO	645
SC-CDS35-8	Self Contained	95"	35.5"	52"	115	11.2	1/2	NO	900
SC-CDS35-10	Self Contained	119"	35.5"	52"	115	13.8	1/2	NO	1230
SC-CDS35-12	Self Contained	143"	35.5"	52"	115	17.4	3/4	NO	1344
R-CDS35-4	Remote	50"	37.5"	52"	115	0.8	1400	NO	460
R-CDS35-6	Remote	71"	35.5"	52"	115	1.3	2100	NO	595
R-CDS35-8	Remote	95"	35.5"	52"	115	1.6	2800	NO	845
R-CDS35-10	Remote	119"	35.5"	52"	115	2.4	3500	NO	1175
R-CDS35-12	Remote	143"	35.5"	52"	115	2.4	4200	NO	1295

MODEL NUMBER SUFFIX - B = Black W = White SS = Stainless Steel
 • Cases are designed to operate at 75 degrees Fahrenheit and 55% relative humidity
 • Specification subject to change without notice



Standard Specifications and Optional Features

CONSTRUCTION

- UL Classified to ANSI/NSF 7
- Foamed in place CFC free foam
- Triple pane insulated front glass - 26" H
- Heavy gauge steel super structure
- Bottom storage
- Drain is included for cleaning

INTERIOR

- White, black, and stainless steel ends
- Stainless steel heavy gauge mezzanine shelf
- White aluminum floor (bottom storage area)
- Air insulated baffle (prevents moisture from dripping into display area)

EXTERIOR

- Double pane rear removable doors
- Newly designed rear compression door jamb
- Removable front grille allows for cleaning
- Removable rear grille for easy servicing
- 1" Bumper

FINISHES

- Satin finish extrusion on doors and door tracks
- White, black, and stainless steel front and ends
- Stainless steel mirror trim
- Stainless steel heavy gauge top - 17" W
- White exterior rear

LIGHTING

- 2 rows of T12 lighting at top of unit

ELECTRICAL REQUIREMENTS

- 115V
- Unit must be hard wired
- UL/CUL listed
- 115V-12AMP general purpose receptacle (wired separately)

REFRIGERATION

- Coevap system (eliminates need for condensate pan)
- R134A expansion valve system
- Gravity coil located at inside top of unit
- Self contained unit
- Automatic defrost controlled by time clock (self contained unit only)
- Pressure control maintains constant temperatures
- Remotes available

OPTIONS

- LED lit
- LED lit shelf
- Scale stand
- Paper cutter
- Stainless steel, laminate, or paint
- Mirrored doors
- Extra stainless steel mezzanine shelf
- Drop work shelf
- Front bumper 1" or 3"
- Door lock
- Digital thermometer
- Pass thru front doors 4', 6', 8' only
- Sandwich racks
- Salad pan settings

Important Note:

All refrigerated cases are designed to operate in an environment of 75 degrees and 55% relative humidity.

Product must be cooled before being displayed within the case.

DRAIN IS REQUIRED



35 Series - Double Duty

Deli

Howard • McCray

Technical Data

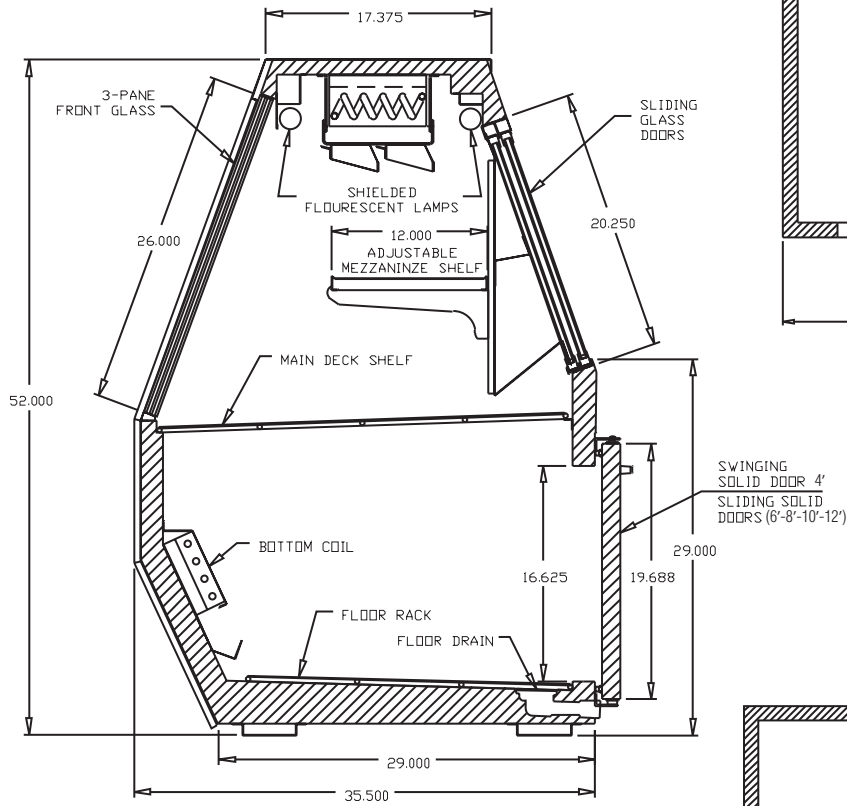
Model No.	SC R	SC-CDS35-4 R-CDS35-4	SC-CDS35-6 R-CDS35-6	SC-CDS35-8 R-CDS35-8	SC-CDS35-10 R-CDS35-10	SC-CDS35-12 R-CDS35-12
Length		50"	71"	95"	119"	143"
Height		52"	52"	52"	52"	52"
Depth		37.5"	35.5"	35.5"	35.5"	35.5"
Depth with bottom door (Dimensions are +/- 1/4")		X"	X"	X"	X"	X"
Operating temperature		36°F to 40°F	36°F to 40°F	36°F to 40°F	36°F to 40°F	36°F to 40°F
Refrigerant (exp. valve)	SC	R134A	R134A	R134A	R134A	R134A
Compressor size HP	SC	1/4	1/3	1/2	1/2	3/4
Defrost per day (24 hours)	Air Defrost	1 per day	1 per day	1 per day	1 per day	1 per day
BTU's at +20°F Evap. Temp.	R	1400	2100	2800	3500	4200
Voltage	SC	115	115	115	115	115
Amperage	SC	6	8.7	11.2	13.8	17.4
Remote Voltage	R	115	115	115	115	115
Amperage, lights only	R	0.8	1.3	1.6	2.4	2.4
Cord and plug	SC	NO	NO	NO	NO	NO
	R	NO	NO	NO	NO	NO
Exterior color		W, B, SS	W, B, SS	W, B, SS	W, B, SS	W, B, SS
Interior color		W, B, SS	W, B, SS	W, B, SS	W, B, SS	W, B, SS
Inside end panels		W, B, SS	W, B, SS	W, B, SS	W, B, SS	W, B, SS
Floors		W, B, SS	W, B, SS	W, B, SS	W, B, SS	W, B, SS
# of top doors		2	2	4	4	4
Door size		19.19" x 19.19"	29.625" x 19.19"	19.19" x 19.19"	23.5" x 19.19"	29.625" x 19.19"
# of bottom doors	SC	1 external	2	2	3	4
	R	2	2	4	4	4
# of coils		2	2	2	2	2
Bottom storage		Yes	Yes	Yes	Yes	Yes
Front glass		26" x 45"	26" x 66"	26" x 90"	26" x 114"	26" x 138"
# of main deck shelves		2	3	4	5	6
Main deck size		31.625" x 22.25"	31.625" x 22.25"	31.625" x 22.25"	31.625" x 22.25"	31.625" x 22.25"
Cubic capacity		30	45	60	75	90
Mezzanine shelf		Standard	Standard	Standard	Standard	Standard
Shipping Info						
Height		58"	58"	58"	58"	58"
Depth		44"	44"	44"	44"	44"
Length		61"	87"	109"	135"	157"
Gross weight SC/R		500/460	645/595	900/845	1230/1175	1344/1295
Cubic feet		90	128	160	200	231



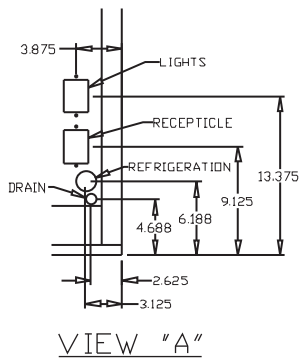
A Division of HMC Enterprises LLC • 831 East Cayuga St • Philadelphia, PA 19124 USA

(215) 464-6800 • 1-800-344-8222 • Fax (215) 969-4890 • E-Mail: sales@howardmccray.com • www.howardmccray.com

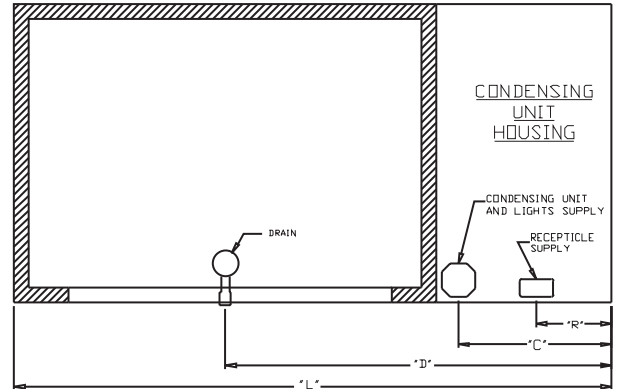
Technical Data • Side View • Plan View



Cross Section

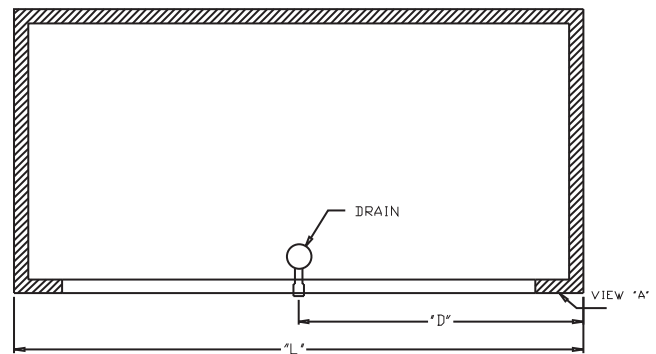


VIEW "A"



SIZE	"L"	"R"	"C"	"D"
4	50	25	25	33
6	71	9	18.250	45.875
8	95	9	18.250	57.875
10	119	9	18.250	69.875
12	143	9	18.250	81.875

Plan View Self-contained



SIZE	"L"	"D"
4	50	25
6	71	35.500
8	95	47.500
10	119	59.500
12	143	61.500

Plan View Remote

