

## TRE - Trench Drain System

### SPECIFICATION:

**TRE Model** Trench Drain System is 14-gauge type 304 stainless steel, fully welded with a brush satin finish. Perforated waste strainer provided at each drain. Units are 4" wide and lengths as needed. Standard modules 3'-0" up to 11'-6" long are available as noted. Optional end flanges as shown with neoprene gaskets, can be used to join modules in the field if required to make long runs. 2" dia. drains with a perforated strainer are located as needed.

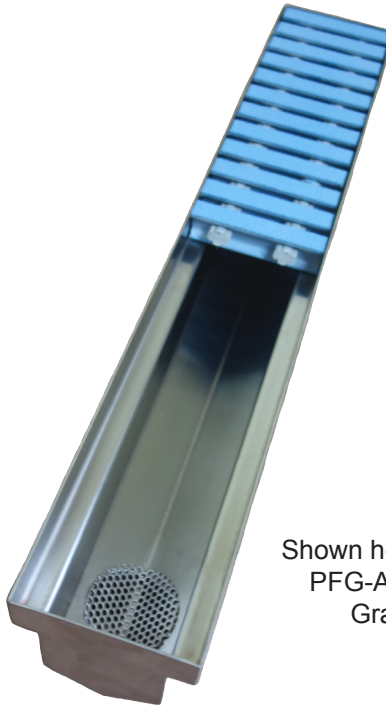
Grating options are Fiberglass (PFG) or SQ stainless steel grid design.

### PRODUCT GUIDE:

Use in all facilities as individual trough drains, perimeter drains or interconnected with Floor Troughs for volume drainage system.

### OPTIONS:

- 12-gauge stainless steel
- Fiberglass Grating (Grey)
- ADA Fiberglass Grating (Blue)
- SQ Grating
- Custom designs, sizes and waste location.



Shown here with Optional  
PFG-ADA Fiberglass  
Grating (Blue)



Specifications subject to change without notice.



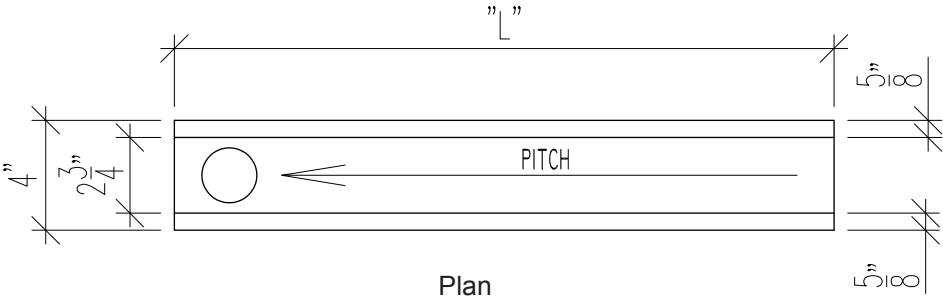
P.O. Box 206  
Copiague, NY 11726-0206

800-221-5644/631-789-8881  
Fax: 631-789-3633

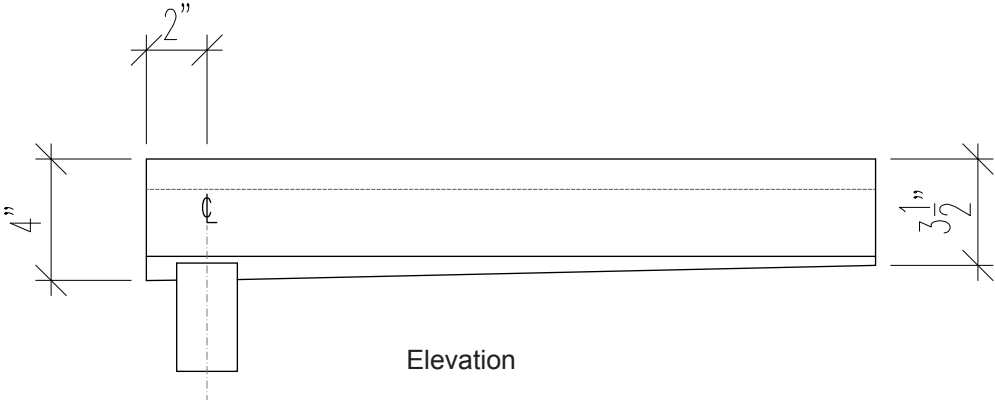
[www.imcteddy.com](http://www.imcteddy.com)

TRE-10 0115

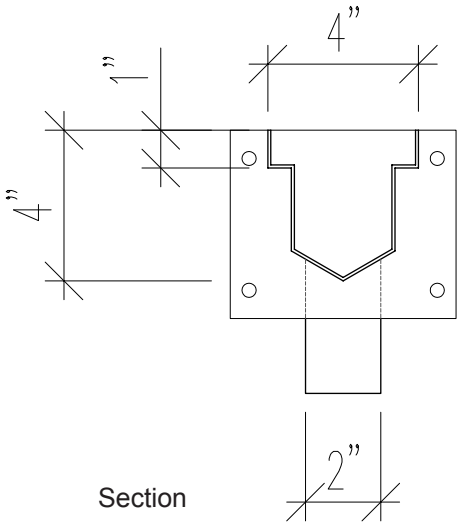
# TRE - Trench Drain System



Plan



Elevation



Section

Specifications subject to change without notice.



P.O. Box 206  
Copiague, NY 11726-0206

800-221-5644/631-789-8881  
Fax: 631-789-3633

www.imcteddy.com

TRE-10 0115