



# "HNS" Maple Top Work Tables

w/ 1 3/4" thick Hard Rock Maple Top  
w/ Galvanized Base and Undershelf



AUTOQUOTES



1-3/4" MAPLE TOP w/ UNDERSHELF					
24"WIDE	Qty	30"WIDE	Qty	36"WIDE	Qty
HNS01		HNS08		HNS15	
HNS02		HNS09		HNS16	
HNS03		HNS10		HNS17	
HNS04		HNS11		HNS18	
HNS05		HNS12		HNS19	
HNS06		HNS13		HNS20	
HNS06A		HNS13A		HNS20A	
HNS07		HNS14		HNS21	

**FEATURES:**

- \* 1 3/4" Thick Hard Rock Maple Top top style "SC" flat top
- \* Maple top is finished with penetrating oil with optional natural clear Varnique Finish
- \* Galvanized base and undershelf,
- \* Adjustable Lower Shelf
- \* Adjustable bullet feet
- \* Shipped knocked-down, easy - to - assemble
- \* Optional drawers, casters, pot racks, etc. available
- \* All models are approved by the National Sanitation Foundation

**MATERIAL:**

- Top: Laminated Hard Rock Maple
- Shelf: 18 gauge Galvanized Steel
- \*\* 6 ft. table only, 16 gauge galvanized steel
- Legs: 16 gauge Galvanized Steel
- Gussets: Galvanized Steel
- Feet: 1" adjustable galvanized bullet feet

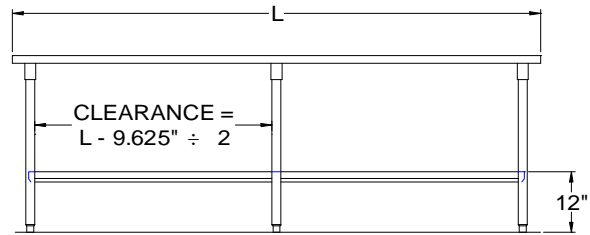
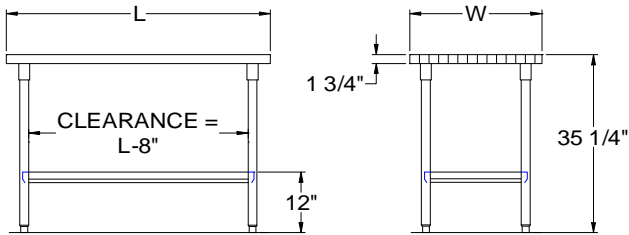
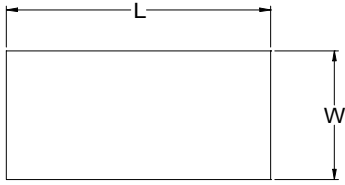
**OPTIONAL ACCESSORIES**

	MODEL #	Qty
DRAWER		
DRAWER LOCK		
ADJUSTABLE SHELF		
CASTERS		
OVERSHELVES		
POT RACK		

**John Boos & Co**

3601 S. Banker Street - Effingham, IL 62401  
 Phone: 217-347-7701 - Fax: 217-347-7705  
 Email: sales@johnboos.com - Web-site:www. johnboos.com

# DETAILED SPECIFICATIONS



All units ship unassembled for reduced shipping cost.  
 Units 7 ft. and larger are furnished with six legs.  
 All dimensions are typical.  
 Tolerance +/- .500".

Finished size of undershelf.  
 Shelf length = length minus 4.875"  
 Shelf width = width minus 4.25"

## 1-3/4" MAPLE TOP & UNDERSHELF

L	24" WIDE	WT.	30" WIDE	WT.	36" WIDE	WT.
36	HNS01	84	HNS08	102	HNS15	118
48	HNS02	106	HNS09	129	HNS16	151
60	HNS03	129	HNS10	158	HNS17	185
72	HNS04	157	HNS11	191	HNS18	226
84	HNS05	184	HNS12	224	HNS19	271
96	HNS06	206	HNS13	251	HNS20	297
108	HNS06A	228	HNS13A	279	HNS20A	330
120	HNS07	249	HNS14	306	HNS21	363

### John Boos & Co

3601 S. Banker Str - Effingham, IL 62401 Phone: 217-347-7701 - Fax: 217-347-7705  
 Email: sales@johnboos.com - Web-site: www.johnboos.com



December 2016

John Boos is constantly engaged in a program of improving products and therefore reserves the right to change specification without prior notice