



JOHN BOOS & CO.

315 SOUTH FIRST STREET
 P.O. BOX 609
 EFFINGHAM, IL. 62401
 (217) 347-7701 / FAX (217) 347-7705

E-MAIL: sales@johnboos.com Web Site: www.johnboos.com

REVISIONS:

JOHN BOOS & COMPANY

THIS DRAWING AND THE DESIGN SHOWN ARE THE PROPERTY OF JOHN BOOS & CO. REPRODUCTION, INFRINGEMENT OR ANY OTHER UNAUTHORIZED USE OF THIS DRAWING WITHOUT THE WRITTEN CONSENT OF JOHN BOOS & CO. WILL BE SUBJECT TO LEGAL ACTION.

SALES ORDER NUMBER:

JK

DRAWN BY:

9-3-08

DATE:

1/2"=1'

SCALE:

PBMS2016-6

MODEL NUMBER:

QUANTITY:

ITEM NUMBER:

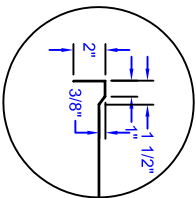
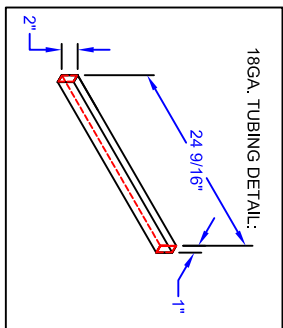
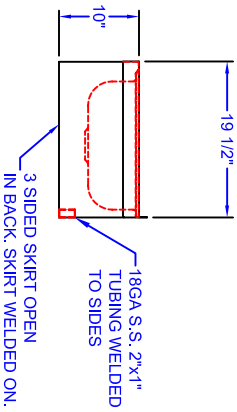
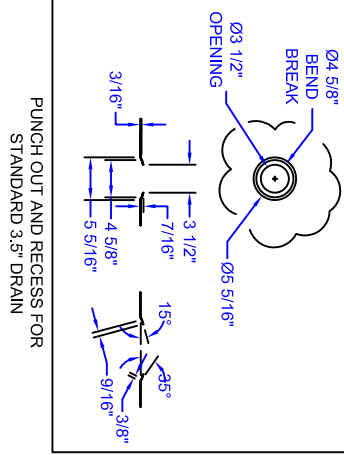
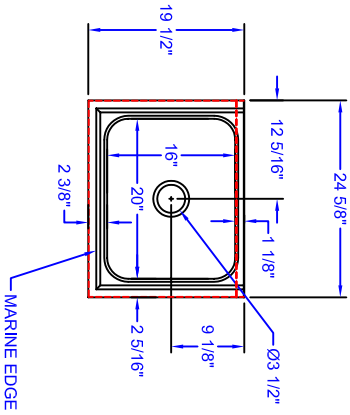
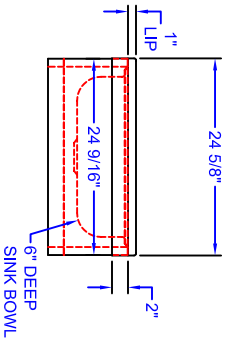
ROOM NUMBER:

QUAD LOCATION:

SHEET NUMBER:

MATERIALS

DECK: 18GA. S.S.
 BASE: 18GA. S.S.



MARINE EDGE DETAIL

FEATURES:
 FLOOR MOUNTED UNIT ELIMINATES THE NEED OF LIFTING HEAVY CONTAINERS.

SINK BOWL WELDED IN, CONSISTENCY OF FULL GAUGE THICKNESS THROUGHOUT.

CONSTRUCTION:
 TIG WELDED AND POLISHED TO BLEND TO MATCH ADJACENT SURFACES.

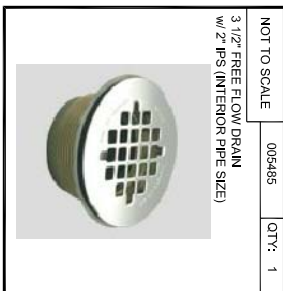
DRAIN IS 2" IPS

TOLERANCES:
 DIMENSIONAL DIMENSIONS ± .0625
 ANGULAR DIMENSIONS ± .5 DEGREE

CONSTRUCTION NOTES:
 - 304 STAINLESS STEEL
 - ALL FABRICATION, WELDING, POLISHING, SEALANT, COMPONENTS TO BE IN ACCORDANCE WITH NSF STANDARD 2
 - ALL WELDS TO BE GROUND SMOOTH, POLISHED AND BLENDED TO MATCH ADJACENT SURFACES

NOTES:

- 6" DEEP DRAWN BOWL
- MARINE EDGE ON 3 SIDES
- SINK SKIRT 3 SIDES OPEN IN REAR



NOT TO SCALE 005485 QTY: 1
 3 1/2" FREE FLOW DRAIN
 w/ 2" IPS (INTERIOR PIPE SIZE)