



# JOHN BOOS & CO.

315 SOUTH FIRST STREET  
P.O. BOX 609  
EFFINGHAM, IL. 62401  
(217) 347-7701 / FAX (217) 347-7705

E-MAIL: sales@johnboos.com Web Site: www.johnboos.com

### REVISIONS:

## JOHN BOOS & COMPANY

THIS DRAWING AND THE DESIGN SHOWN ARE THE PROPERTY OF JOHN BOOS & CO. REPRODUCTION, IMPRINTING OR ANY OTHER UNAUTHORIZED USE OF THIS DRAWING WITHOUT THE WRITTEN CONSENT OF JOHN BOOS & CO. WILL BE SUBJECT TO LEGAL ACTION.

SALES ORDER NUMBER:

JK

DRAWN BY:

2-6-02

DATE:

1/2"=1'

SCALE:

MODEL NUMBER:

PBMS2820-6

QUANTITY:

ITEM NUMBER:

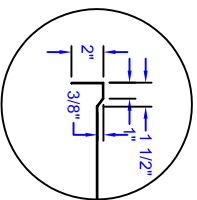
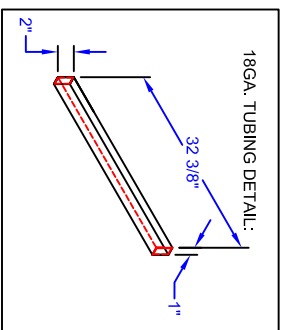
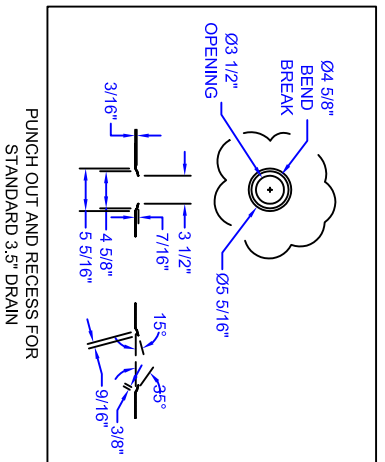
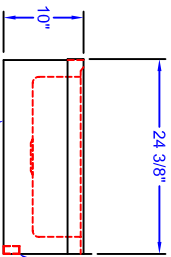
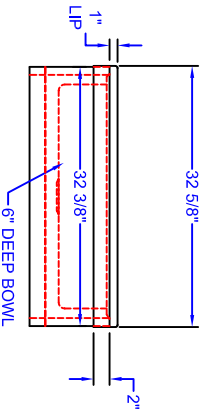
ROOM NUMBER:

QUAD LOCATION:

SHEET NUMBER:

### MATERIALS

DECK: 18GA. S.S.  
BASE: 18GA. S.S.



### MARINE EDGE DETAIL

FEATURES:  
FLOOR MOUNTED UNIT ELIMINATES THE NEED OF LIFTING HEAVY CONTAINERS.

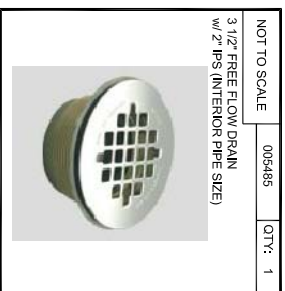
SINK BOWL WELDED IN, CONSISTENCY OF FULL GAUGE THICKNESS THROUGHOUT.

CONSTRUCTION:  
TIG WELDED AND POLISHED TO BLEND TO MATCH ADJACENT SURFACES.

DRAIN IS 2" IPS

- 6" DEEP FABRICATED BOWL
- MARINE EDGE ON 3 SIDES
- SINK SKIRT 3 SIDES OPEN IN REAR

### NOTES:



NOT TO SCALE  
005485  
QTY: 1  
3 1/2" FREE FLOW DRAIN  
w/ 2" IPS (INTERIOR PIPE SIZE)

TOLERANCES:  
DIMENSIONAL DIMENSIONS ± .0625  
ANGULAR DIMENSIONS ± .5 DEGREE

### CONSTRUCTION NOTES:

- 304 STAINLESS STEEL
- ALL FABRICATION, WELDING, POLISHING, SEALANT, COMPONENTS TO BE IN ACCORDANCE WITH NSF STANDARD 2
- ALL WELDS TO BE GROUND SMOOTH, POLISHED AND BLENDED TO MATCH ADJACENT SURFACES