



**John
BOOS**
Since 1887

ITEM #: _____ QTY: _____
 MODEL #: _____
 PROJECT NAME: _____

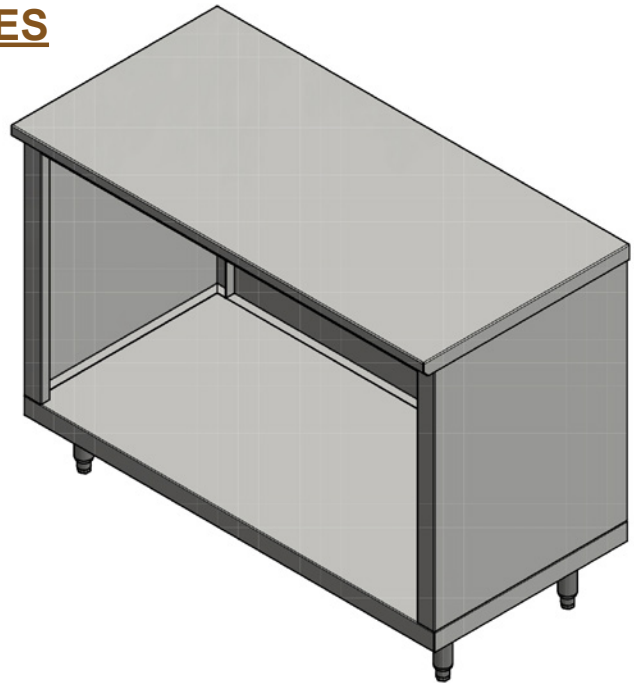
3601 S. Banker St. Effingham, IL 62401 • P.O. BOX 609 • Ph: (888) 431-2667 • Fax: (800) 433-2667

ENCLOSED BASE WORK TABLES

OPEN BASE STYLE - FLAT TOP

FEATURES:

- ENCLOSED BASE WORK TABLES - **OPEN BASE STYLE**
- **FLAT TOP** WITH 1-1/2" STALLION EDGE ON FRONT AND 90 DEGREE BEND DOWN SIDE EDGE FOR TABLE LINE-UP
- TOP IS SOUND DEADENED REINFORCED WITH 2"X3" CHANNEL RUNNING ENTIRE LENGTH OF TOP
- STAINLESS STEEL LEG WITH ADJUSTABLE FEET
- FIXED OR ADJUSTABLE INTERMEDIATE SHELF AVAILABLE
- 36" WORKING HEIGHT
- SHIPPED STANDARD WELDED SET-UP



CONSTRUCTION:

- TOP: STAINLESS STEEL CABINET TOPS TIG WELDED, EXPOSED WELDS ARE POLISHED TO MATCH ADJACENT SURFACE #4 POLISHED, SATIN FINISH
- REMOVABLE STAINLESS STEEL LEGS

MATERIAL:

- TOP: 14GA TYPE 300 STAINLESS STEEL WITH #4 POLISH, SATIN FINISH
- BODY: 18GA TYPE 430 STAINLESS STEEL
- LEGS: STAINLESS STEEL WITH ADJUSTABLE FEET



STALLION EDGE

INTERMEDIATE SHELF IS AVAILABLE IN FIXED OR ADJUSTABLE

- FIXED MID SHELF ADD: "-1S"
- ADJ MID SHELF ADD: "-1AS"

24" WIDE

MODEL	QTY
4CO4-2436	
4CO4-2448	
4CO4-2460	
4CO4-2472	
4CO4-2484	
4CO4-2496	
4CO4-24108	
4CO4-24120	
4CO4-24132	
4CO4-24144	

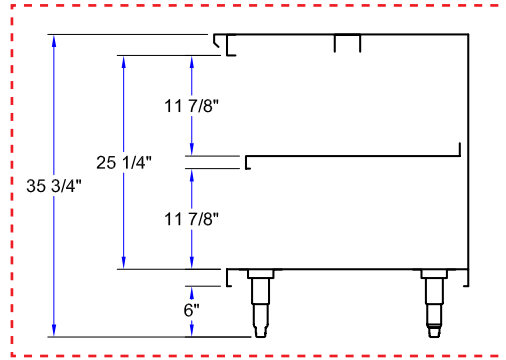
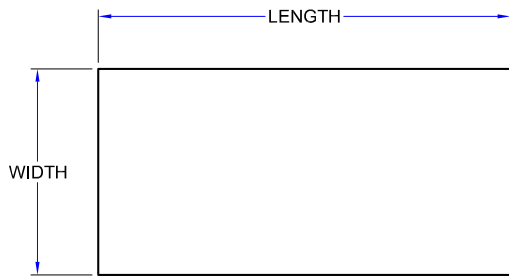
30" WIDE

MODEL	QTY
4CO4-3036	
4CO4-3048	
4CO4-3060	
4CO4-3072	
4CO4-3084	
4CO4-3096	
4CO4-30108	
4CO4-301204	
4CO4-30132	
4CO4-30144	

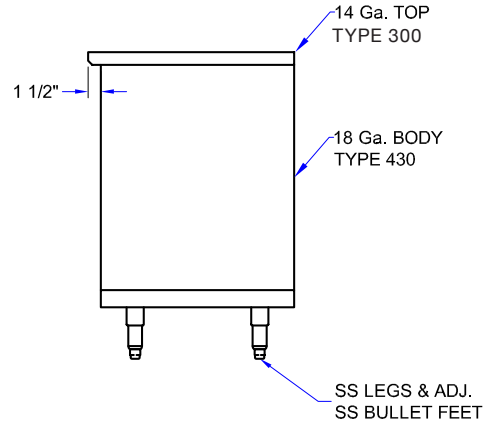
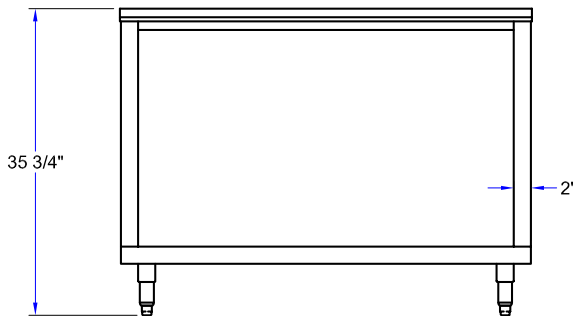
36" WIDE

MODEL	QTY
4CO4-3636	
4CO4-3648	
4CO4-3660	
4CO4-3672	
4CO4-3684	
4CO4-3696	
4CO4-36108	
4CO4-36120	
4CO4-36132	
4CO4-36144	

DETAILED SPECIFICATIONS



SHOWN WITH
OPTIONAL
INTERMEDIATE
SHELF



24" WIDE

LENGTH	MODEL	WT. (LBS)
36"	4CO4-2436	200
48"	4CO4-2448	240
60"	4CO4-2460	280
72"	4CO4-2472	325
84"	4CO4-2484	365
96"	4CO4-2496	415
108"	4CO4-24108	455
120"	4CO4-24120	490
132"	4CO4-24132	525
144"	4CO4-24144	560

30" WIDE

LENGTH	MODEL	WT. (LBS)
36"	4CO4-3036	225
48"	4CO4-3048	260
60"	4CO4-3060	300
72"	4CO4-3072	340
84"	4CO4-3084	380
96"	4CO4-3096	425
108"	4CO4-30108	465
120"	4CO4-301204	540
132"	4CO4-30132	570
144"	4CO4-30144	600

36" WIDE

LENGTH	MODEL	WT. (LBS)
36"	4CO4-3636	250
48"	4CO4-3648	290
60"	4CO4-3660	330
72"	4CO4-3672	375
84"	4CO4-3684	415
96"	4CO4-3696	460
108"	4CO4-36108	460
120"	4CO4-36120	540
132"	4CO4-36132	583
144"	4CO4-36144	625

MODEL # STRUCTURE

4 = 14 GAUGE
 CO = S.S. CABINET OPEN FRONT
 4 = 430 STAINLESS STEEL WRAP
 24 = WIDTH - FRONT TO BACK
 36 = LENGTH - LEFT TO RIGHT

4CO4-2436

SOME UNITS SHIP UNASSEMBLED FOR REDUCED SHIPPING COST. ALL DIMENSIONS ARE TYPICAL. TOLERANCE +/- .500"
 John Boos & Co. is constantly engaged in a program of improving products and therefore reserves the right to change specifications without prior notice.



3601 S. Banker St. • Effingham, IL 62401 • PO BOX 609 • quotes@johnboos.com



www.johnboos.com