



**John  
BOOS**  
Since 1887

ITEM #: \_\_\_\_\_ QTY: \_\_\_\_\_  
 MODEL #: \_\_\_\_\_  
 PROJECT NAME: \_\_\_\_\_

3601 S. Banker St. Effingham, IL 62401 • P.O. BOX 609 • Ph: (888) 431-2667 • Fax: (800) 433-2667

## PRO-BOWL HAND SINKS - SPACE SAVER



### FEATURES:

- ONE PIECE DEEP DRAWN BOWL
- ALL SINK BOWLS HAVE LARGE LIBERAL RADIUS CORNERS
- INCLUDES BASKET DRAIN
- SPLASH MOUNT FAUCET HOLES 4" ON-CENTER

### CONSTRUCTION:

- BOWL: STAINLESS STEEL TOPS ARE TIG WELDED, EXPOSED WELDS ARE POLISHED TO MATCH ADJACENT SURFACE.

### MATERIAL:

- BOWL: TYPE 300 STAINLESS STEEL POLISH, SATIN FINISH
- BRACKET: TYPE 300 STAINLESS STEEL POLISH, SATIN FINISH



PBHS-99-P-SSTD



PBHS-W-0909



PBHS-W-0909-SSLR

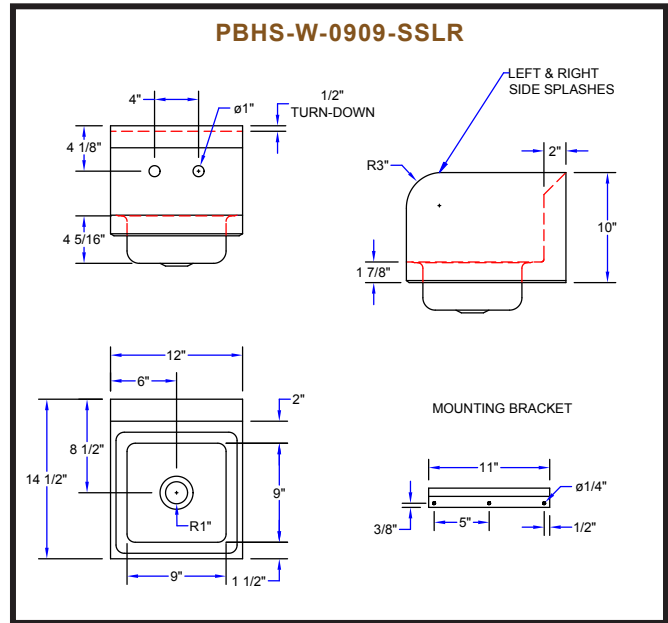
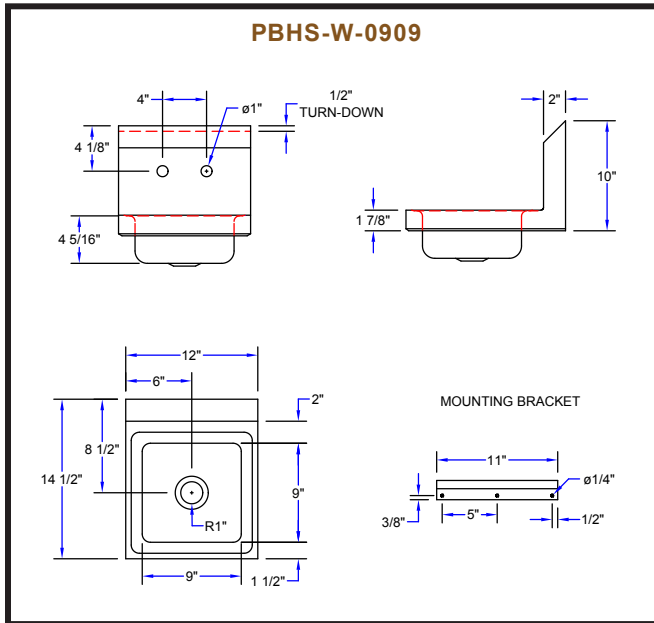
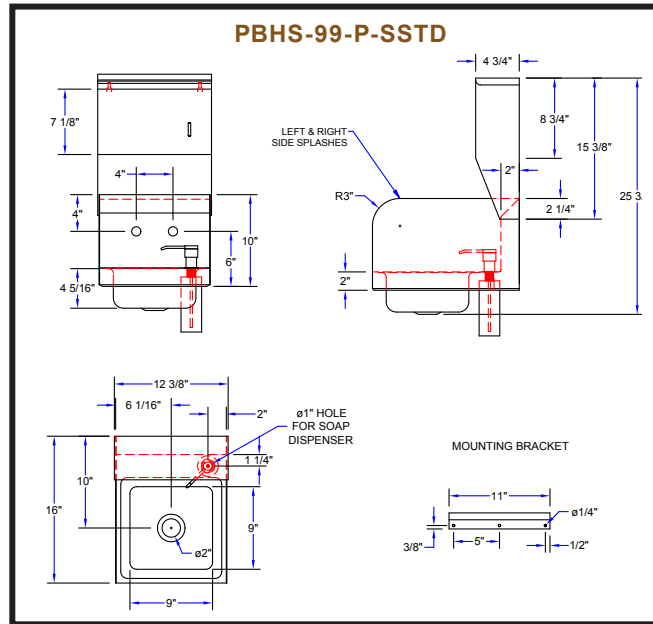
### **PRO-BOWL HAND SINKS**

MODEL #	QTY
PBHS-99-P-SSTD	
PBHS-W-0909	
PBHS-W-0909-SSLR	

### **OPTIONAL ACCESSORIES**

DESCRIPTION	QTY
FAUCETS	
SIDE SPASH	
ADA WRIST BLADES	
TOWEL DISPENSER	
LEVER WASTES	
OVER FLOWS	
P-TRAPS	

# DETAILED SPECIFICATIONS



## PRO-BOWL HAND SINKS

MODEL #	BOWL SIZE (LxWxD)	DRAIN SIZE	FAUCET LOCATION	SIDE SPLASH
PBHS-99-P-SSTD	9" X 9" X 5"	1-7/8"	SPLASH MOUNT - 4" ON-CENTER (GOOSE NECK FAUCET, SOAP & TOWEL DISPENSER INCLUDED.)	LH & RH
PBHS-W-0909	9" X 9" X 5"	1-7/8"	SPLASH MOUNT - 4" ON-CENTER	N/A
PBHS-W-0909-SSLR	9" X 9" X 5"	1-7/8"	SPLASH MOUNT - 4" ON-CENTER	LH & RH

SOME UNITS SHIP UNASSEMBLED FOR REDUCED SHIPPING COST. ALL DIMENSIONS ARE TYPICAL. TOLERANCE +/- .500" John Boos & Co. is constantly engaged in a program of improving products and therefore reserves the right to change specifications without prior notice.



3601 S. Banker St. • Effingham, IL 62401 • PO BOX 609 • quotes@johnboos.com



www.johnboos.com