

Refrigerated Service Slide In Counter Case



Conforms to NSF STD 7
TYPE II

- NE3620RSV
- NE4820RSV
- NE6020RSV
- NE7220RSV

Lengths include end panels
 35-3/4"L x 33"D x 20-3/8"H
 47-3/4"L x 33"D x 20-3/8"H
 59-3/4"L x 33"D x 20-3/8"H
 71-3/4"L x 33"D x 20-3/8"H

STANDARD FEATURES

- NOTE: Contact Factory for lead time
- Breeze~E (Type-II) w/ EnergyWise s/c refrigeration
- (1) Level of clear glass shelving removable and adjustable on 1" centers
- Blue Fin coated coil
- Compressor air rear intake, front discharge
- Condensate pan (self-contained refrig. only)
- Integrated average product temperature of 40°F or less
- LED top & shelf lights
- NOTE: Overall case height is 39-5/8" (includes below counter)
- One piece formed ABS plastic tub
- One year parts & labor; 5 year compressor warranty
- Slide in base
- Vertical, fixed front & side UV bonded frameless glass

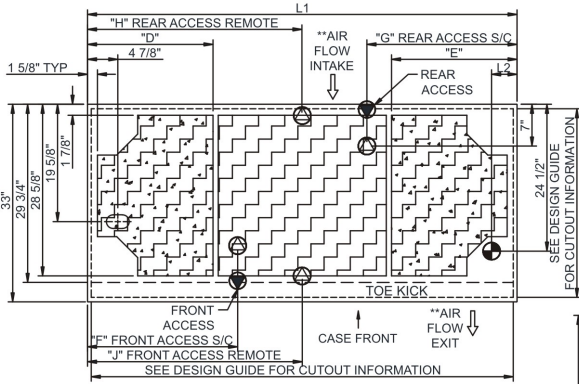
| Features | Standard | Options |
|--------------------|---|---|
| EXTERIOR COLOR | <input type="checkbox"/> Black | <input type="checkbox"/> Painted (non-stock colors, specify RAL#) <input type="checkbox"/> Painted (stock colors, specify RAL#) <input type="checkbox"/> Stainless steel |
| INTERIOR COLOR | <input type="checkbox"/> Black | <input type="checkbox"/> NOTE: Interior color must be FDA & NSF approved <input type="checkbox"/> Painted (stock colors, specify RAL#) <input type="checkbox"/> Stainless steel |
| LEFT END GLASS | <input type="checkbox"/> Glass end | <input type="checkbox"/> No end glass w/ synchronized defrost |
| RIGHT END GLASS | <input type="checkbox"/> Glass end | <input type="checkbox"/> No end glass w/ synchronized defrost |
| UPPER REAR | <input type="checkbox"/> Clear glass rear sliding doors | <input type="checkbox"/> Reflective glass rear sliding doors |
| LIGHTS | <input type="checkbox"/> LED 3500K w/ frosted lens | <input type="checkbox"/> LED 3000K w/ frosted lens <input type="checkbox"/> LED 4000K w/ frosted lens |
| ELECTRICAL CONNECT | <input type="checkbox"/> 6' straight blade power cord (self-cont.) | <input type="checkbox"/> 6' locking power cord (self-cont.) <input type="checkbox"/> Electrical leads (remote) |
| REAR VENTED PANEL | <input type="checkbox"/> None | <input type="checkbox"/> Painted (stock colors, specify RAL#) <input type="checkbox"/> Stainless steel |
| REFRIGERATION | <input type="checkbox"/> Breeze~E (Type-II) w/ EnergyWise s/c refrigeration (rear access) | <input type="checkbox"/> Breeze~E (Type-II) w/ EnergyWise s/c refrigeration (front access) (see important notes) <input type="checkbox"/> Remote w/thermostat, solenoid & TXV (front access) <input type="checkbox"/> Remote w/thermostat, solenoid & TXV (rear access) |
| MISCELLANEOUS | | <input type="checkbox"/> Rear door lock <input type="checkbox"/> Second year parts & labor warranty (excludes compressor) |
| ACCESSORIES | | <input type="checkbox"/> Clean Sweep® coil cleaner (n/a w/remote) |

Reveal[®]

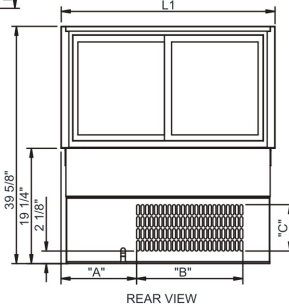
Product Specifications

| | | |
|--|---|----------------------------------|
| Intended Environment: Type II - Designed to operate in ambient conditions of 80°F and 60% relative humidity unless noted otherwise in system information below. | | |
| Zone | Intended Product To Be Displayed | Warmest Avg Prod Temp ° F |
| All | Unpackaged refrigerated products | 40 |

PLAN VIEW

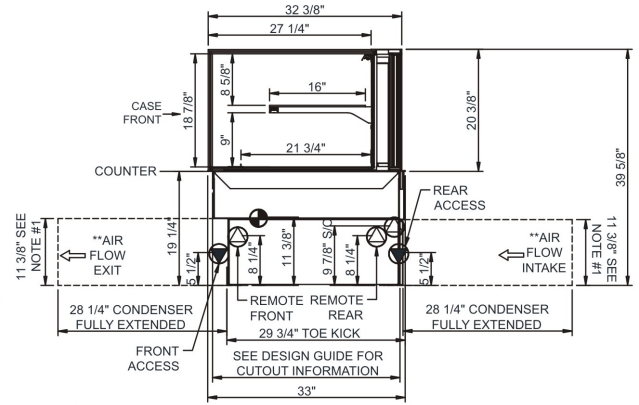


| | "D" | "E" | "F" | "G" | "H" | "J" |
|-----------|-----|-----|---------|---------|---------|---------|
| NE3620RSV | N/A | N/A | 7" | 7" | 17 7/8" | 17 7/8" |
| NE4820RSV | 9" | 9" | 12 3/4" | 12 3/4" | 23 7/8" | 23 7/8" |
| NE6020RSV | 9" | 21" | 12 3/4" | 24 3/4" | 29 7/8" | 29 7/8" |
| NE7220RSV | 21" | 21" | 25 1/8" | 25 1/8" | 35 7/8" | 35 7/8" |



| | "A" | "B" | "C" |
|-----------|---------|---------|--------|
| NE3620RSV | 12 5/8" | 17 3/4" | 7 3/4" |
| NE4820RSV | 18 5/8" | 17 3/4" | 7 3/4" |
| NE6020RSV | 30 5/8" | 17 3/4" | 7 3/4" |
| NE7220RSV | 30 5/8" | 17 3/4" | 7 3/4" |

SIDE VIEW



NOTES:

- 11 3/8" TALL, FULL WIDTH OF CASE OPENING IN CABINET OR COUNTER IS REQUIRED TO PULL OUT REFRIGERATION SYSTEM.
- SEE DESIGN GUIDE FOR CUTOUT SIZE IN CABINET FOR CASE TO DROP INTO.
- BACK OF COUNTER / CABINET MUST BE VENTED PROPERLY FOR ADEQUATE AIRFLOW TO CONDENSER.
- **REPRESENTS REAR PULLOUT REFRIGERATION. AIR FLOW INTAKE AND EXIT DETAILS ARE REVERSED WITH FRONT PULLOUT REFRIGERATION OPTION.
- SELF-CONTAINED ACCESS ONLY BY PULLING OUT CONDENSER UNIT.

NOTE: ALL DIMENSIONS APPROXIMATE

- ELECTRICAL JUNCTION BOX (SUPPLIED WITH 6" LEADS OR POWER CORD).
- LOCATION OF DRAIN TUBE FOR REMOTE REF. ONLY (SUPPLIED WITH 3/4" OR 1 1/2" PVC TUBE).

- REFRIGERATION LINE CONNECTION.
- REMOTE FLOOR SINK & UTILITIES ACCESS AREA.

- SELF-CONTAINED CASE SERVICE ACCESS AREA.
- DRY CASE SERVICE ACCESS AREA.

| Model Technical Specifications | | | | | | | | | | | | | | | |
|--------------------------------|-----|-------|------|----------------------|------------|---------|-----|------|----------|-------|-------|-----------------|-------|------|--------|
| Model | L" | L1" | L2" | System Circuit Volts | | | Phs | Freq | Amps *** | Watts | Wires | NEMA Plug | SST | BTUH | Est Wt |
| NE3620RSV | N/A | 35.75 | 4.13 | Remote(Type II) | Circuit #1 | 110-120 | 1 | 60 | 1.08 | 32 | 2+G | Leads Single | 20.00 | 1000 | 700 |
| | | | | Self-Contained | Circuit #1 | 110-120 | 1 | 60 | 9.76 | 762 | 2+G | 5-15P or L5-15P | N/A | N/A | |
| NE4820RSV | N/A | 47.75 | 4.13 | Remote(Type II) | Circuit #1 | 110-120 | 1 | 60 | 1.08 | 35 | 2+G | Leads Single | 24.00 | 1300 | 900 |
| | | | | Self-Contained | Circuit #1 | 110-120 | 1 | 60 | 9.76 | 765 | 2+G | 5-15P or L5-15P | N/A | N/A | |
| NE6020RSV | N/A | 59.75 | 4.13 | Remote(Type II) | Circuit #1 | 110-120 | 1 | 60 | 1.38 | 52 | 2+G | Leads Single | 20.00 | 1600 | 1,000 |
| | | | | Self-Contained | Circuit #1 | 110-120 | 1 | 60 | 10.06 | 782 | 2+G | 5-15P or L5-15P | N/A | N/A | |
| NE7220RSV | N/A | 71.75 | 4.13 | Remote(Type II) | Circuit #1 | 110-120 | 1 | 60 | 1.38 | 55 | 2+G | Leads Single | 20.00 | 1900 | 1,150 |
| | | | | Self-Contained | Circuit #1 | 110-120 | 1 | 60 | 9.86 | 774 | 2+G | 5-15P or L5-15P | N/A | N/A | |

*** Does not include electric defrost on freezer models.

Regulatory Approvals:

| | |
|------------|--|
| All Models | Accordance with AHRI Std 1200 ETL Listed to UL 471 ETL Listed to CAN/CSA 22.2 No. 120 ETL Sanitation to NSF 7 |
|------------|--|



In Accordance with
AHRI Std 1200

DOE 2017
Energy Efficiency
Compliant

Important Notes:

- 1) ELECTRICAL NOTE: If GFCI is required, a GFCI breaker MUST be used in lieu of a GFCI receptacle
- 2) Back side of counter must be open or vented the full length of the unit to allow proper ventilation for the refrigeration system.
- 3) A vent in the front of the counter recommended to help dissipate compressor heat.
- 4) Rear Access Standard - Counter must be configured to allow air to be drawn in the rear and discharged out the front.
- 5) Front Access Option - Counter must be configured to allow air to be drawn in the front and discharged out the rear.
- 6) Unit can intake and discharge from rear with optional rear vented panel.
- 7) 19.25" minimum space required beneath counter surface.