



FOOD EQUIPMENT

SERVING THE FOOD INDUSTRY SINCE 1951

HOT FOOD MERCHANDISERS

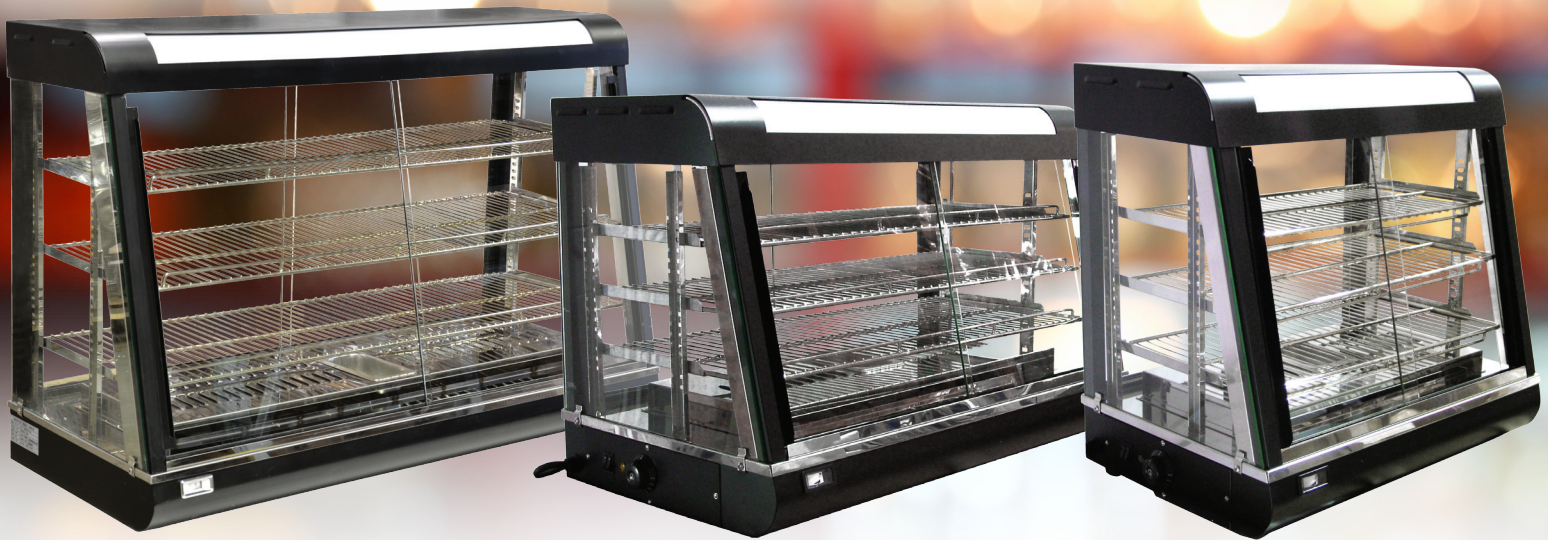
ITEM: 21749
MODEL: DW-CN-0686

ITEM: 21570
MODEL: DW-CN-0902

ITEM: 21571
MODEL: DW-CN-1194

INCREASE YOUR IMPULSE SALES BY DISPLAYING YOUR FOOD HOT AND FRESH

- Perfect for concession stands, convenience stores, cafeterias, and other self-serve applications
- Designed with adjustable trays and glass on all sides
- Equipped with a thermostat monitor for consistent temperatures
- Water tray included to add humidity to the cabinet
- Opens front and back



WARRANTY
PARTS AND LABOR



SHIPPED ON PALLET

LOCALLY
QPS
APPROVED



NEMA
5 - 15
125 VAC / 15 AMP



Authorized Dealer

FOOD EQUIPMENT

27-INCH HOT FOOD MERCHANDISER DW-CN-0686 / ITEM 21749



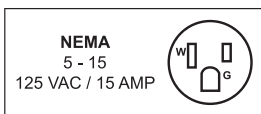
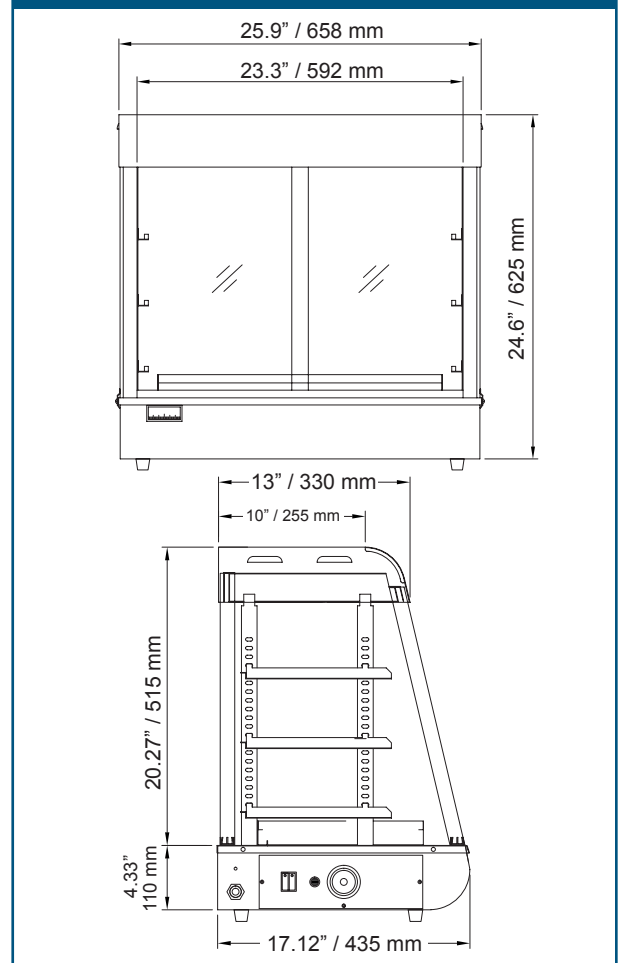
FEATURES

- Designed with adjustable trays and glass on all sides
- Equipped with a thermostat monitor for consistent temperatures
- Water tray included to add humidity to the cabinet
- Opens front and back

TECHNICAL SPECIFICATIONS

| | |
|----------------------|----------------------------------------------|
| ITEM NUMBER | 21749 |
| MODEL | DW-CN-0686 |
| POWER | 1.34 kW |
| TEMPERATURE | 30°C - 110°C / 86°F - 230°F |
| EXTERIOR LIGHTS | Incandescent x 2 |
| INTERIOR LIGHTS | Fluorescent x 2 |
| ELECTRICAL | 110V / 60Hz / 1Ph |
| WEIGHT | 81.4 lbs. / 36.9 kg. |
| DIMENSIONS (WDH) | 25.9" x 17.12" x 24.6" 658 x 435 x 625 mm |
| PACKAGING WEIGHT | 110 lbs. / 49.8 kg. |
| PACKAGING DIMENSIONS | 32" x 23" x 31" 812.8 x 584.2 x 787.4 mm |

TECHNICAL DRAWING AND DIMENSIONS



OMCAN INC.

Telephone: 1-800-465-0234
 Fax: (905) 607-0234
 Email: sales@omcan.com
 Website: www.omcan.com



Follow us to keep up to date with the latest news and offers



FOOD EQUIPMENT

36-INCH HOT FOOD MERCHANDISER DW-CN-0902 / ITEM 21570



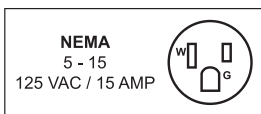
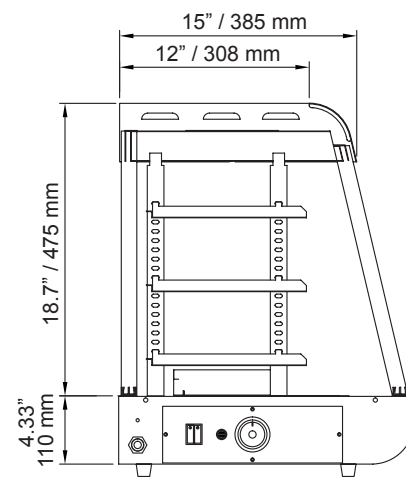
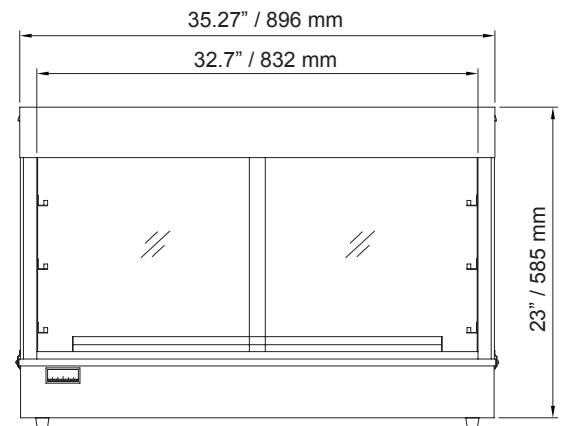
FEATURES

- Designed with adjustable trays and glass on all sides
- Equipped with a thermostat monitor for consistent temperatures
- Water tray included to add humidity to the cabinet
- Opens front and back

TECHNICAL SPECIFICATIONS

| | |
|----------------------|----------------------------------------------------|
| ITEM NUMBER | 21570 |
| MODEL | DW-CN-0902 |
| POWER | 1.50 kW |
| TEMPERATURE | 30°C - 110°C / 86°F - 230°F |
| EXTERIOR LIGHTS | Incandescent x 2 |
| INTERIOR LIGHTS | Fluorescent x 2 |
| ELECTRICAL | 110V / 60Hz / 1Ph |
| WEIGHT | 110 lbs. / 49.8 kg. |
| DIMENSIONS (WDH) | 35.27" x 18.75" x 23" 896 x 476.25 x 585 mm |
| PACKAGING WEIGHT | 140 lbs. / 63.5 kg. |
| PACKAGING DIMENSIONS | 40" x 23.75" x 28.75" 1016 x 603.25 x 730.25 mm |

TECHNICAL DRAWING AND DIMENSIONS



OMCAN INC.

Telephone: 1-800-465-0234
 Fax: (905) 607-0234
 Email: sales@omcan.com
 Website: www.omcan.com



Follow us to keep up to date with the latest news and offers



FOOD EQUIPMENT

47-INCH HOT FOOD MERCHANDISER DW-CN-1194 | ITEM 21571



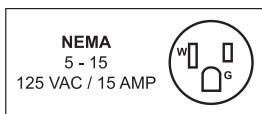
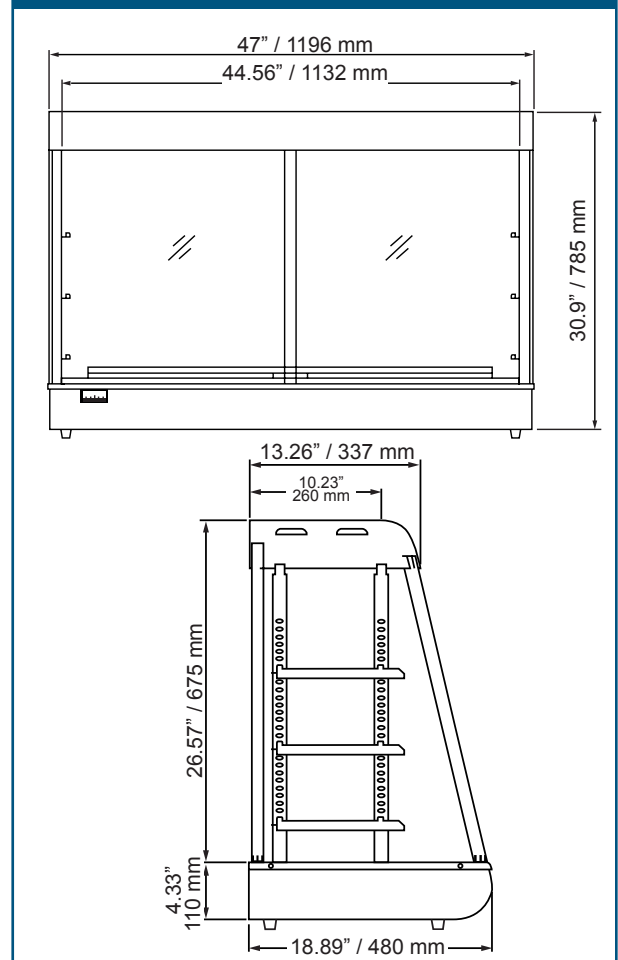
FEATURES

- Designed with adjustable trays and glass on all sides
- Equipped with a thermostat monitor for consistent temperatures
- Water tray included to add humidity to the cabinet
- Opens front and back

TECHNICAL SPECIFICATIONS

| | |
|----------------------|------------------------------------------------|
| ITEM NUMBER | 21571 |
| MODEL | DW-CN-1194 |
| POWER | 1.50 kW |
| TEMPERATURE | 30°C - 110°C / 86°F - 230°F |
| EXTERIOR LIGHTS | Incandescent x 2 |
| INTERIOR LIGHTS | Fluorescent x 2 |
| ELECTRICAL | 110V / 60Hz / 1Ph |
| WEIGHT | 167 lbs. / 75.7 kg. |
| DIMENSIONS (WDH) | 47.08" x 18.89" x 30.9" 1196 x 480 x 785 mm |
| PACKAGING WEIGHT | 213 lbs. / 96.6 kg. |
| PACKAGING DIMENSIONS | 52" x 26" x 36" 1320.8 x 660.4 x 914.4 |

TECHNICAL DRAWING AND DIMENSIONS



OMCAN INC.

Telephone: 1-800-465-0234

Fax: (905) 607-0234

Email: sales@omcan.com

Website: www.omcan.com



Follow us to keep up to date with the latest news and offers



2016.E.O.E